



# News Release

Connect with DOL at  
<https://blog.dol.gov>



TRANSMISSION OF MATERIALS IN THIS RELEASE IS EMBARGOED UNTIL  
8:30 A.M. (Eastern) Thursday, April 21, 2022

## UNEMPLOYMENT INSURANCE WEEKLY CLAIMS

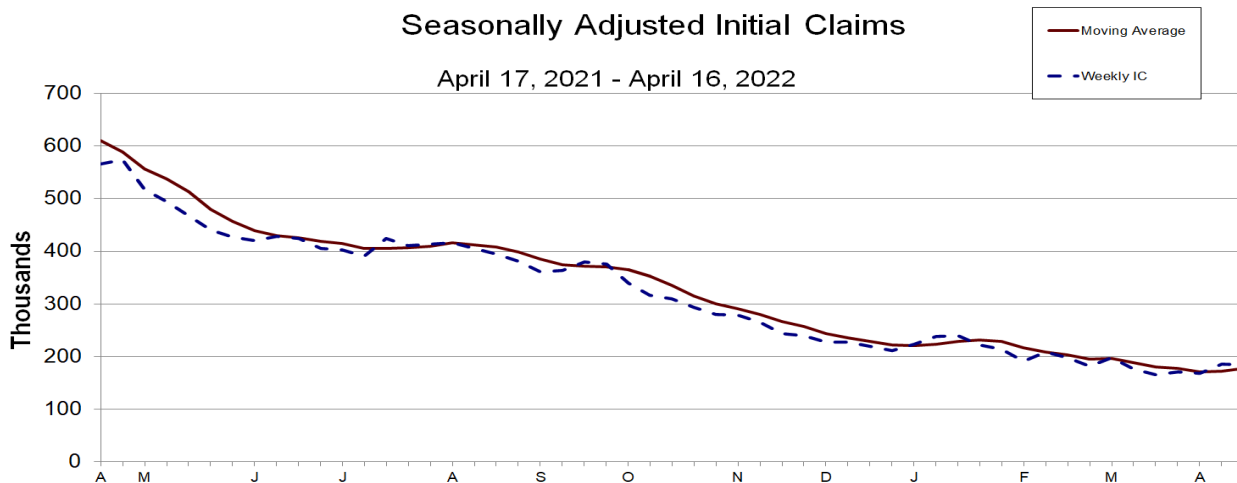
### SEASONALLY ADJUSTED DATA

In the week ending April 16, the advance figure for seasonally adjusted **initial claims** was 184,000, a decrease of 2,000 from the previous week's revised level. The previous week's level was revised up by 1,000 from 185,000 to 186,000. The 4-week moving average was 177,250, an increase of 4,500 from the previous week's revised average. The previous week's average was revised up by 500 from 172,250 to 172,750.

The advance seasonally adjusted **insured unemployment rate** was 1.0 percent for the week ending April 9, a decrease of 0.1 percentage point from the previous week's unrevised rate. The advance number for seasonally adjusted **insured unemployment** during the week ending April 9 was 1,417,000, a decrease of 58,000 from the previous week's unrevised level of 1,475,000. This is the lowest level for insured unemployment since February 21, 1970 when it was 1,412,000. The 4-week moving average was 1,481,750, a decrease of 31,250 from the previous week's revised average. This is the lowest level for this average since March 21, 1970 when it was 1,456,750. The previous week's average was revised up by 1,500 from 1,511,500 to 1,513,000.

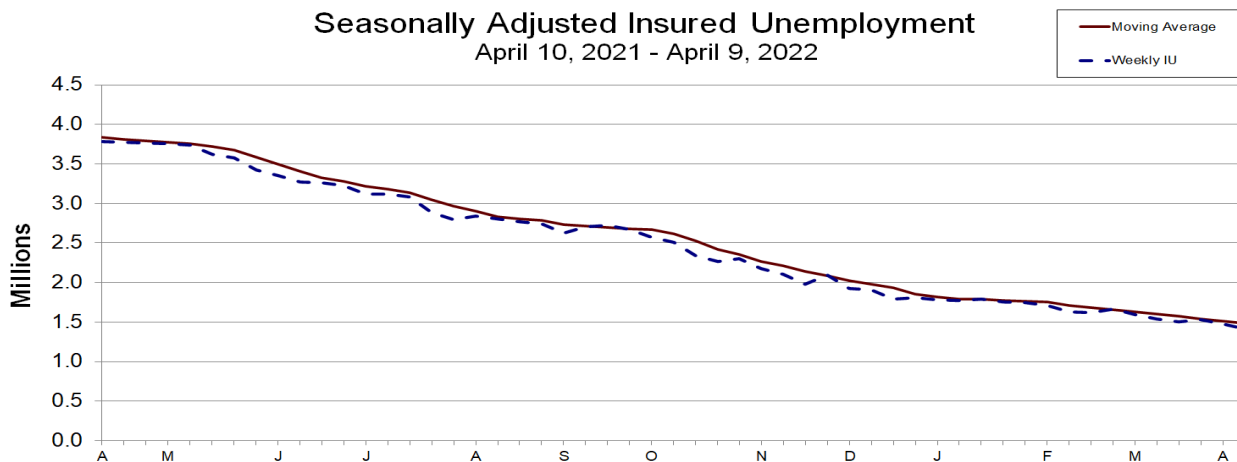
Seasonally Adjusted Initial Claims

April 17, 2021 - April 16, 2022



Seasonally Adjusted Insured Unemployment

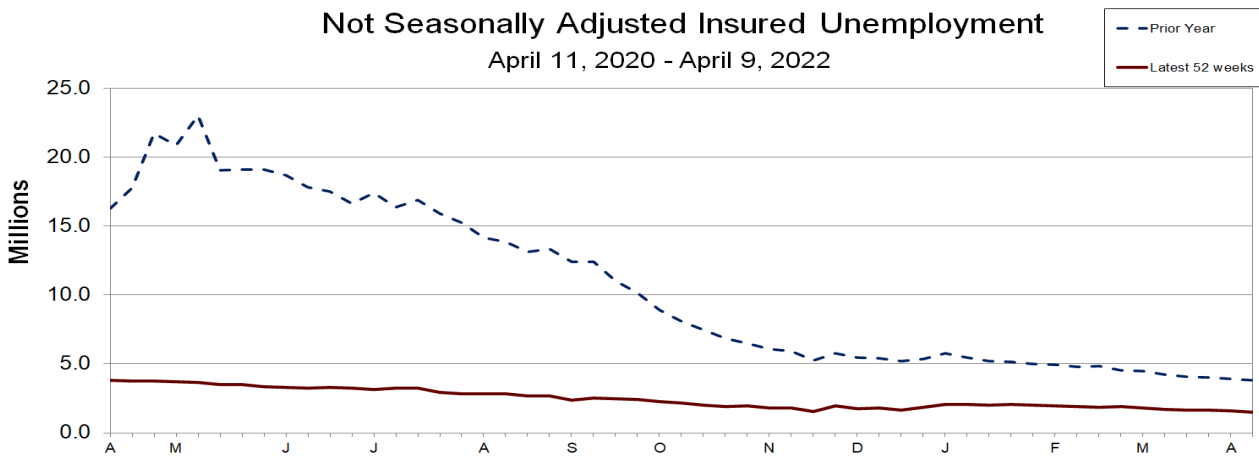
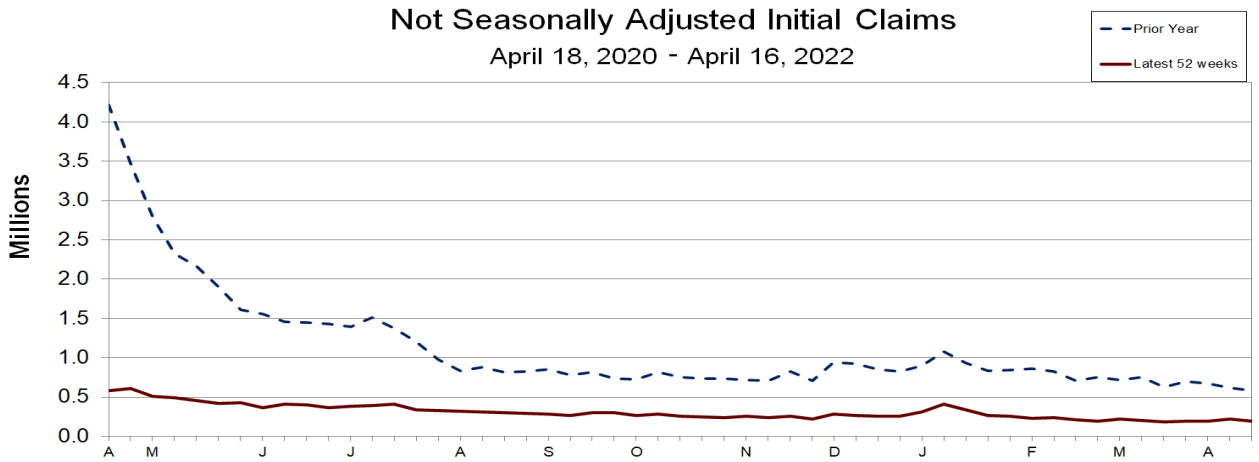
April 10, 2021 - April 9, 2022



**UNADJUSTED DATA**

The advance number of actual initial claims under state programs, unadjusted, totaled 196,897 in the week ending April 16, a decrease of 27,235 (or -12.2 percent) from the previous week. The seasonal factors had expected a decrease of 24,800 (or -11.1 percent) from the previous week. There were 583,397 initial claims in the comparable week in 2021.

The advance unadjusted insured unemployment rate was 1.1 percent during the week ending April 9, unchanged from the prior week. The advance unadjusted level of insured unemployment in state programs totaled 1,475,585, a decrease of 95,550 (or -6.1 percent) from the preceding week. The seasonal factors had expected a decrease of 35,406 (or -2.3 percent) from the previous week. A year earlier the rate was 2.7 percent and the volume was 3,828,584.



The total number of continued weeks claimed for benefits in all programs for the week ending April 2 was 1,622,094, a decrease of 88,031 from the previous week. There were 17,394,057 weekly claims filed for benefits in all programs in the comparable week in 2021.

During the week ending April 2, Extended Benefits were available in the following state: New Jersey.

Initial claims for UI benefits filed by former Federal civilian employees totaled 536 in the week ending April 9, an increase of 14 from the prior week. There were 463 initial claims filed by newly discharged veterans, an increase of 68 from the preceding week.

There were 8,322 continued weeks claimed filed by former Federal civilian employees the week ending April 2, a decrease of 1,135 from the previous week. Newly discharged veterans claiming benefits totaled 4,256, a decrease of 279 from the prior week.

The highest insured unemployment rates in the week ending April 2 were in New Jersey (2.3), California (2.2), Alaska (2.0), Minnesota (2.0), Illinois (1.7), Massachusetts (1.7), New York (1.7), Rhode Island (1.7), Pennsylvania (1.5), and the Virgin Islands (1.5).

The largest increases in initial claims for the week ending April 9 were in Missouri (+7,194), Michigan (+5,950), California (+3,215), Indiana (+3,193), and Texas (+2,617), while the largest decreases were in Ohio (-3,886), Wisconsin (-1,159), Oklahoma (-776), Utah (-270), and Hawaii (-219).

---

UNEMPLOYMENT INSURANCE DATA FOR REGULAR STATE PROGRAMS

---

<b>WEEK ENDING</b>	<b>April 16</b>	<b>April 9</b>	<b>Change</b>	<b>April 2</b>	<b>Prior Year<sup>1</sup></b>
Initial Claims (SA)	184,000	186,000	-2,000	168,000	566,000
Initial Claims (NSA)	196,897	224,132	-27,235	195,003	583,397
4-Wk Moving Average (SA)	177,250	172,750	+4,500	170,500	610,000

<b>WEEK ENDING</b>	<b>April 9</b>	<b>April 2</b>	<b>Change</b>	<b>March 26</b>	<b>Prior Year<sup>1</sup></b>
Insured Unemployment (SA)	1,417,000	1,475,000	-58,000	1,529,000	3,779,000
Insured Unemployment (NSA)	1,475,585	1,571,135	-95,550	1,657,835	3,828,584
4-Wk Moving Average (SA)	1,481,750	1,513,000	-31,250	1,542,750	3,838,750
Insured Unemployment Rate (SA) <sup>2</sup>	1.0%	1.1%	-0.1	1.1%	2.7%
Insured Unemployment Rate (NSA) <sup>2</sup>	1.1%	1.1%	0.0	1.2%	2.7%

---

INITIAL CLAIMS FILED IN FEDERAL PROGRAMS (UNADJUSTED)<sup>3</sup>

---

<b>WEEK ENDING</b>	<b>April 9</b>	<b>April 2</b>	<b>Change</b>	<b>Prior Year<sup>1</sup></b>
Federal Employees (UCFE)	536	522	+14	1,154
Newly Discharged Veterans (UCX)	463	395	+68	582

---

CONTINUED WEEKS CLAIMED FILED FOR UI BENEFITS IN ALL PROGRAMS (UNADJUSTED)<sup>3</sup>

---

<b>WEEK ENDING</b>	<b>April 2</b>	<b>March 26</b>	<b>Change</b>	<b>Prior Year<sup>1</sup></b>
Regular State	1,567,530	1,654,416	-86,886	3,875,209
Federal Employees	8,322	9,457	-1,135	15,838
Newly Discharged Veterans	4,256	4,535	-279	7,698
Extended Benefits <sup>4</sup>	27,516	27,985	-469	492,997
State Additional Benefits <sup>5</sup>	2,081	2,042	+39	1,797
STC / Workshare <sup>6</sup>	12,389	11,690	+699	84,979
<b>TOTAL<sup>7</sup></b>	<b>1,622,094</b>	<b>1,710,125</b>	<b>-88,031</b>	<b>17,394,057</b>

**FOOTNOTES**

SA - Seasonally Adjusted Data, NSA - Not Seasonally Adjusted Data Continued weeks claimed represent all weeks of benefits claimed during the week being reported, and do not represent weeks claimed by unique individuals.

1. Prior year is comparable to most recent data.
2. Most recent week used covered employment of 140,025,048 as denominator.
3. NOTICE: Ongoing claims for PUA and PEUC are no longer included in this news release. Any ongoing claims for these programs represent activity for periods prior to the programs' expiration on September 6, 2021. Claims activity for these programs will continue to be posted online at: [Weekly Pandemic Program Claims](#)
4. Information on the EB program can be found here: [EB Program information](#)
5. Some states maintain additional benefit programs for those claimants who exhaust regular benefits, and when applicable, extended benefits. Information on states that participate, and the extent of benefits paid, can be found starting on page 4-5 of this link: [Extensions and Special Programs PDF](#)
6. Information on STC/Worksharing can be found starting on page 4-11 of the following link: [Extensions and Special Programs PDF](#)
7. Prior year total includes PUA and PEUC claims.

## Advance State Claims - Not Seasonally Adjusted

STATE	Initial Claims Filed During Week Ended April 16			Insured Unemployment For Week Ended April 9		
	Advance	Prior Wk	Change	Advance	Prior Wk	Change
Alabama	1,991	2,142	-151	2,774	3,768	-994
Alaska	1,015	960	55	5,270	5,644	-374
Arizona	3,596	4,193	-597	12,818	13,313	-495
Arkansas	1,075	1,276	-201	6,856	6,758	98
California	47,318	46,608	710	370,815	366,445	4,370
Colorado	2,569	2,604	-35	20,601	18,559	2,042
Connecticut	3,751	2,352	1,399	19,563	21,466	-1,903
Delaware	206	299	-93	3,276	3,307	-31
District of Columbia	522	769	-247	3,698	4,226	-528
Florida	5,446	6,619	-1,173	30,038	32,493	-2,455
Georgia	3,566	4,153	-587	25,660	55,615	-29,955
Hawaii	1,022	1,385	-363	6,013	6,380	-367
Idaho	790	782	8	3,827	4,498	-671
Illinois	7,804	9,499	-1,695	84,359	92,836	-8,477
Indiana	5,970	6,576	-606	24,031	21,762	2,269
Iowa	1,252	1,271	-19	11,897	13,893	-1,996
Kansas	890	1,111	-221	3,907	4,190	-283
Kentucky	1,792	1,809	-17	8,628	8,877	-249
Louisiana	1,469	2,047	-578	8,827	10,011	-1,184
Maine	498	653	-155	5,985	6,426	-441
Maryland	2,041	2,061	-20	13,667	16,233	-2,566
Massachusetts	3,941	4,181	-240	53,525	56,985	-3,460
Michigan	8,211	11,892	-3,681	44,154	55,072	-10,918
Minnesota	3,256	3,132	124	49,971	51,370	-1,399
Mississippi	803	1,151	-348	3,531	4,127	-596
Missouri	2,465	10,121	-7,656	13,002	12,164	838
Montana	970	660	310	4,842	5,160	-318
Nebraska	516	583	-67	2,991	3,239	-248
Nevada	2,128	2,431	-303	12,709	13,533	-824
New Hampshire	214	248	-34	1,941	2,242	-301
New Jersey	7,588	6,575	1,013	82,131	85,103	-2,972
New Mexico	864	915	-51	8,161	7,780	381
New York	11,258	14,151	-2,893	142,837	149,262	-6,425
North Carolina	2,218	2,711	-493	12,114	13,402	-1,288
North Dakota	274	246	28	3,426	3,857	-431
Ohio	10,710	13,805	-3,095	44,626	50,563	-5,937
Oklahoma	1,508	1,936	-428	10,410	11,865	-1,455
Oregon	3,545	3,406	139	21,821	21,677	144
Pennsylvania	9,273	10,369	-1,096	71,905	81,183	-9,278
Puerto Rico	861	866	-5	9,294	10,931	-1,637
Rhode Island	1,231	872	359	7,096	7,604	-508
South Carolina	1,673	2,103	-430	8,416	8,794	-378
South Dakota	78	133	-55	1,479	1,770	-291
Tennessee	2,098	2,383	-285	10,897	12,225	-1,328
Texas	13,099	15,541	-2,442	88,542	90,749	-2,207
Utah	1,587	1,544	43	5,661	6,285	-624
Vermont	376	424	-48	2,910	2,948	-38
Virgin Islands	18	32	-14	322	520	-198
Virginia	2,024	1,933	91	7,882	6,971	911
Washington	4,520	4,703	-183	41,630	38,660	2,970
West Virginia	635	800	-165	6,317	6,243	74
Wisconsin	3,834	4,664	-830	26,493	29,451	-2,958
Wyoming	538	452	86	2,039	2,700	-661
US Total	196,897	224,132	-27,235	1,475,585	1,571,135	-95,550

Note: Advance claims are not directly comparable to claims reported in prior weeks. Advance claims are reported by the state liable for paying the unemployment compensation, whereas previous weeks reported claims reflect claimants by state of residence. In addition, claims reported as "workshare equivalent" in the previous week are added to the advance claims as a proxy for the current week's "workshare equivalent" activity.

Seasonally Adjusted US Weekly UI Claims (in thousands)

Week Ending	Initial Claims	Change from		Insured Unemployment	Change from		IUR
		Prior Week	4-Week Average		Prior Week	4-Week Average	
April 10, 2021	571	-74	625.25	3,779	-51	3,838.75	2.7
April 17, 2021	566	-5	610.00	3,776	-3	3,811.00	2.7
April 24, 2021	574	8	589.00	3,767	-9	3,788.00	2.7
May 1, 2021	517	-57	557.00	3,756	-11	3,769.50	2.7
May 8, 2021	494	-23	537.75	3,737	-19	3,759.00	2.7
May 15, 2021	467	-27	513.00	3,618	-119	3,719.50	2.6
May 22, 2021	441	-26	479.75	3,575	-43	3,671.50	2.6
May 29, 2021	427	-14	457.25	3,422	-153	3,588.00	2.5
June 5, 2021	420	-7	438.75	3,352	-70	3,491.75	2.4
June 12, 2021	429	9	429.25	3,271	-81	3,405.00	2.3
June 19, 2021	424	-5	425.00	3,266	-5	3,327.75	2.3
June 26, 2021	405	-19	419.50	3,230	-36	3,279.75	2.3
July 3, 2021	403	-2	415.25	3,116	-114	3,220.75	2.3
July 10, 2021	391	-12	405.75	3,116	0	3,182.00	2.3
July 17, 2021	424	33	405.75	3,082	-34	3,136.00	2.2
July 24, 2021	411	-13	407.25	2,881	-201	3,048.75	2.1
July 31, 2021	414	3	410.00	2,794	-87	2,968.25	2.0
August 7, 2021	416	2	416.25	2,839	45	2,899.00	2.1
August 14, 2021	405	-11	411.50	2,804	-35	2,829.50	2.0
August 21, 2021	395	-10	407.50	2,772	-32	2,802.25	2.0
August 28, 2021	381	-14	399.25	2,740	-32	2,788.75	2.0
September 4, 2021	361	-20	385.50	2,628	-112	2,736.00	1.9
September 11, 2021	363	2	375.00	2,705	77	2,711.25	2.0
September 18, 2021	380	17	371.25	2,720	15	2,698.25	2.0
September 25, 2021	376	-4	370.00	2,674	-46	2,681.75	2.0
October 2, 2021	340	-36	364.75	2,571	-103	2,667.50	1.9
October 9, 2021	317	-23	353.25	2,512	-59	2,619.25	1.9
October 16, 2021	310	-7	335.75	2,334	-178	2,522.75	1.7
October 23, 2021	294	-16	315.25	2,263	-71	2,420.00	1.7
October 30, 2021	280	-14	300.25	2,303	40	2,353.00	1.7
November 6, 2021	279	-1	290.75	2,172	-131	2,268.00	1.6
November 13, 2021	265	-14	279.50	2,100	-72	2,209.50	1.6
November 20, 2021	244	-21	267.00	1,976	-124	2,137.75	1.5
November 27, 2021	240	-4	257.00	2,098	122	2,086.50	1.6
December 4, 2021	228	-12	244.25	1,927	-171	2,025.25	1.4
December 11, 2021	228	0	235.00	1,904	-23	1,976.25	1.4
December 18, 2021	220	-8	229.00	1,793	-111	1,930.50	1.3
December 25, 2021	211	-9	221.75	1,805	12	1,857.25	1.3
January 1, 2022	224	13	220.75	1,778	-27	1,820.00	1.3
January 8, 2022	238	14	223.25	1,776	-2	1,788.00	1.3
January 15, 2022	240	2	228.25	1,787	11	1,786.50	1.3
January 22, 2022	222	-18	231.00	1,757	-30	1,774.50	1.3
January 29, 2022	214	-8	228.50	1,743	-14	1,765.75	1.3
February 5, 2022	191	-23	216.75	1,714	-29	1,750.25	1.2
February 12, 2022	209	18	209.00	1,633	-81	1,711.75	1.2
February 19, 2022	198	-11	203.00	1,623	-10	1,678.25	1.2
February 26, 2022	182	-16	195.00	1,664	41	1,658.50	1.2
March 5, 2022	198	16	196.75	1,594	-70	1,628.50	1.2
March 12, 2022	177	-21	188.75	1,542	-52	1,605.75	1.1
March 19, 2022	166	-11	180.75	1,506	-36	1,576.50	1.1
March 26, 2022	171	5	178.00	1,529	23	1,542.75	1.1
April 2, 2022	168	-3	170.50	1,475	-54	1,513.00	1.1
April 9, 2022	186	18	172.75	1,417	-58	1,481.75	1.0
April 16, 2022	184	-2	177.25				

## Extended Benefits (EB) Continued Claims - Not Seasonally Adjusted

STATE	EB Claims Filed During Weeks Ended:		
	April 2	March 26	Change
Alabama	0	0	0
Alaska	0	0	0
Arizona	1	10	-9
Arkansas	1	0	1
California	1,134	938	196
Colorado	15	32	-17
Connecticut	54	23	31
Delaware	0	0	0
District of Columbia	0	0	0
Florida	56	60	-4
Georgia	0	0	0
Hawaii	1	1	0
Idaho	0	0	0
Illinois	14	36	-22
Indiana	1	0	1
Iowa	1	1	0
Kansas	0	6	-6
Kentucky	0	0	0
Louisiana	1	1	0
Maine	1	2	-1
Maryland	5	16	-11
Massachusetts	0	0	0
Michigan	23	12	11
Minnesota	0	0	0
Mississippi	0	1	-1
Missouri	4	5	-1
Montana	0	0	0
Nebraska	0	0	0
Nevada	4	1	3
New Hampshire	1	1	0
New Jersey	25,765	26,381	-616
New Mexico	0	1	-1
New York	90	120	-30
North Carolina	9	20	-11
North Dakota	0	0	0
Ohio	0	0	0
Oklahoma	0	0	0
Oregon	3	1	2
Pennsylvania	113	136	-23
Puerto Rico	124	109	15
Rhode Island	1	0	1
South Carolina	10	11	-1
South Dakota	0	0	0
Tennessee	3	0	3
Texas	50	35	15
Utah	0	0	0
Vermont	0	0	0
Virgin Islands	0	0	0
Virginia	0	0	0
Washington	0	0	0
West Virginia	4	3	1
Wisconsin	27	22	5
Wyoming	0	0	0
US Total	27,516	27,985	-469

Note: Information on the EB program can be found here: [EB Program information](#)

INITIAL CLAIMS FILED DURING WEEK ENDED  
APRIL 9

INSURED UNEMPLOYMENT FOR WEEK ENDED  
APRIL 2

STATE NAME	CHANGE FROM					CHANGE FROM					ALL PROGRAMS EXCLUDING RAILROAD RETIREMENT	
	STATE	LAST WEEK	YEAR AGO	UCFE <sup>1</sup>	UCX <sup>1</sup>	STATE (%) <sup>2</sup>	LAST WEEK	YEAR AGO	UCFE <sup>1</sup>	UCX <sup>1</sup>		
Alabama	2,142	-98	-8,767	13	8	3,768	0.2	-540	-15,469	46	20	3,834
Alaska	960	135	-3,593	5	2	5,644	2.0	-285	-8,864	79	13	5,736
Arizona	4,193	1,407	-2,009	6	1	13,313	0.5	-311	-36,540	107	14	13,434
Arkansas	1,276	288	-2,098	0	3	6,758	0.6	-1,215	-12,783	51	13	6,822
California	46,608	3,215	-22,850	99	85	366,445	2.2	-21,893	-237,535	2,207	896	369,548
Colorado	2,604	503	-4,133	11	5	18,559	0.7	-2,031	-28,294	223	136	18,918
Connecticut	2,352	255	-3,677	7	4	21,466	1.4	-1,748	-58,582	55	47	21,568
Delaware	299	1	-3,503	1	1	3,307	0.8	41	-6,842	44	6	3,357
District of Columbia	769	-181	-2,858	9	0	4,226	0.8	-409	-18,227	81	1	4,308
Florida	6,619	1,452	-17,783	21	30	32,493	0.4	-2,042	-96,693	157	127	32,777
Georgia	4,153	119	-34,229	34	14	55,615	1.3	-18,556	-83,441	309	196	56,120
Hawaii	1,385	-219	-2,554	3	10	6,380	1.2	-677	-11,600	59	81	6,520
Idaho	782	-75	-5,447	1	1	4,498	0.6	-858	-6,114	94	7	4,599
Illinois	9,499	1,283	-9,487	13	5	92,836	1.7	-1,321	-144,150	358	113	93,307
Indiana	6,576	3,193	-2,966	5	4	21,762	0.8	450	-35,341	79	26	21,867
Iowa	1,271	-100	-3,734	3	4	13,893	0.9	-2,400	-19,607	29	7	13,929
Kansas	1,111	111	-1,027	0	2	4,190	0.3	-576	-5,045	26	14	4,230
Kentucky	1,809	387	-4,190	1	3	8,877	0.5	-1,491	-15,746	55	40	8,972
Louisiana	2,047	570	-7,762	4	4	10,011	0.6	-854	-40,785	51	13	10,075
Maine	653	-74	-1,407	0	1	6,426	1.1	-237	-8,918	33	10	6,469
Maryland	2,061	380	-6,666	10	4	16,233	0.7	-1,758	-30,550	133	58	16,424
Massachusetts	4,181	626	-10,950	8	10	56,985	1.7	-5,994	-54,544	135	69	57,189
Michigan	11,892	5,950	-4,578	6	2	55,072	1.4	5,216	-52,671	87	28	55,187
Minnesota	3,132	-56	-2,349	5	6	51,370	2.0	-1,429	-48,385	111	69	51,550
Mississippi	1,151	262	-3,272	3	0	4,127	0.4	-33	-22,826	66	9	4,202
Missouri	10,121	7,194	-1,314	5	1	12,164	0.4	-2,733	-36,384	54	14	12,232
Montana	660	112	-1,422	10	2	5,160	1.1	-794	-6,565	262	15	5,437
Nebraska	583	115	-1,348	1	1	3,239	0.3	-587	-6,244	8	5	3,252
Nevada	2,431	417	-8,554	6	3	13,533	1.0	-933	-58,204	125	34	13,692
New Hampshire	248	-25	-1,392	1	0	2,242	0.4	-88	-21,123	31	3	2,276
New Jersey	6,575	422	-4,771	20	23	85,103	2.3	-862	-38,620	304	214	85,621
New Mexico	915	184	-4,598	3	1	7,780	1.0	-878	-19,928	114	33	7,927
New York	14,151	1,507	-44,344	18	15	149,262	1.7	-4,879	-232,347	436	255	149,953
North Carolina	2,711	68	-5,287	5	4	13,402	0.3	-199	-33,945	70	78	13,550
North Dakota	246	34	-1,801	2	0	3,857	1.0	-361	-2,992	13	1	3,871
Ohio	13,805	-3,886	-9,524	6	20	50,563	1.0	3,258	-92,367	83	83	50,729
Oklahoma	1,936	-776	-16,061	5	7	11,865	0.8	-302	-26,153	61	45	11,971
Oregon	3,406	-201	-4,973	23	7	21,677	1.2	-1,822	-38,432	404	35	22,116
Pennsylvania	10,369	1,655	-12,085	25	16	81,183	1.5	-2,123	-143,513	251	99	81,533
Puerto Rico	866	-26	-1,436	4	9	10,931	1.3	-3,052	-16,968	155	48	11,134
Rhode Island	872	180	-4,101	1	2	7,604	1.7	-800	-10,283	25	25	7,654
South Carolina	2,103	582	-3,028	9	6	8,794	0.4	-36	-29,640	37	36	8,867
South Dakota	133	23	-157	3	1	1,770	0.4	-203	-1,368	20	1	1,791
Tennessee	2,383	39	-9,038	7	6	12,225	0.4	454	-35,343	31	17	12,273
Texas	15,541	2,617	-51,011	75	88	90,749	0.7	-4,169	-186,639	550	834	92,133
Utah	1,544	-270	-2,808	11	5	6,285	0.4	-226	-5,957	114	15	6,414
Vermont	424	121	-1,828	1	0	2,948	1.0	-246	-8,459	3	0	2,951
Virgin Islands	32	2	-98	0	0	520	1.5	-6	-838	0	0	520
Virginia	1,933	95	-3,101	2	3	6,971	0.2	264	-50,400	48	52	7,071
Washington	4,703	394	-12,898	6	24	38,660	1.2	-1,700	-51,860	257	259	39,176
West Virginia	800	219	-4,733	1	4	6,243	1.0	-100	-12,503	41	25	6,309
Wisconsin	4,664	-1,159	-11,847	9	5	29,451	1.1	-2,626	-63,496	89	15	29,555
Wyoming	452	158	-841	9	1	2,700	1.0	0	-1,471	61	2	2,763
Totals	224,132	29,129	-396,288	536	463	1,571,135	1.1	-86,700	-2,331,594	8,322	4,256	1,583,713

Figures appearing in columns showing over-the-week changes reflect all revisions in data for prior week submitted by state agencies.

1. The Unemployment Compensation program for Federal Employees (UCFE) and the Unemployment Compensation for Ex-servicemembers (UCX) exclude claims filed jointly under other programs to avoid duplication.
2. Rate is not seasonally adjusted. The source of U.S. total covered employment is BLS.



---

**UNADJUSTED INITIAL CLAIMS FOR WEEK ENDED APRIL 9, 2022**

---

**STATES WITH AN INCREASE OF MORE THAN 1,000**

---

<b>State</b>	<b>Change</b>	<b>State Supplied Comment</b>
MO	+7,194	Layoffs in the manufacturing, health care and social assistance, and administrative and support and waste management and remediation services industries.
MI	+5,950	Layoffs in the manufacturing industry.
CA	+3,215	Layoffs in the agriculture, forestry, fishing, and hunting industry.
IN	+3,193	No comment.
TX	+2,617	No comment.
PA	+1,655	Layoffs in the administrative and support and waste management and remediation services, construction, and health care and social assistance industries.
NY	+1,507	Layoffs in the construction, health care and social assistance, and professional, scientific, and technical services industries.
FL	+1,452	No comment.
AZ	+1,407	No comment.
IL	+1,283	Layoffs in the manufacturing, construction, and other services industries.

**STATES WITH A DECREASE OF MORE THAN 1,000**

---

<b>State</b>	<b>Change</b>	<b>State Supplied Comment</b>
OH	-3,886	Fewer layoffs in the manufacturing industry.
WI	-1,159	No comment.

---

## TECHNICAL NOTES

This news release presents the weekly unemployment insurance (UI) claims reported by each state's unemployment insurance program offices. These claims may be used for monitoring workload volume, assessing state program operations and for assessing labor market conditions. States initially report claims directly taken by the state liable for the benefit payments, regardless of where the claimant who filed the claim resided. These are the basis for the advance initial claims and continued claims reported each week. These data come from ETA 538, Advance Weekly Initial and Continued Claims Report. The following week initial claims and continued claims are revised based on a second reporting by states that reflect the claimants by state of residence. These data come from the ETA 539, Weekly Claims and Extended Benefits Trigger Data Report.

### A. Initial Claims

An initial claim is a claim filed by an unemployed individual after a separation from an employer. The claimant requests a determination of basic eligibility for the UI program. When an initial claim is filed with a state, certain programmatic activities take place and these result in activity counts including the count of initial claims. The count of U.S. initial claims for unemployment insurance is a leading economic indicator because it is an indication of emerging labor market conditions in the country. However, these are weekly administrative data which are difficult to seasonally adjust, making the series subject to some volatility.

### B. Continued Weeks Claimed

A person who has already filed an initial claim and who has experienced a week of unemployment then files a continued claim to claim benefits for that week of unemployment. On a weekly basis, continued claims are also referred to as insured unemployment, as continued claims reflect a good approximation of the current number of insured unemployed workers filing for UI benefits. The count of U.S. continued weeks claimed is also a good indicator of labor market conditions. While continued claims are not a leading indicator (they roughly coincide with economic cycles at their peaks and lag at cycle troughs), they provide confirming evidence of the direction of the U.S. economy.

### C. Seasonal Adjustments and Annual Revisions

Over the course of a year, the weekly changes in the levels of initial claims and continued claims undergo regularly occurring fluctuations. These fluctuations may result from seasonal changes in weather, major holidays, the opening and closing of schools, or other similar events. Because these seasonal events follow a more or less regular pattern each year, their influence on the level of a series can be tempered by adjusting for regular seasonal variation. These adjustments make trend and cycle developments easier to spot. At the beginning of each calendar year, the Bureau of Labor Statistics provides the Employment and Training Administration (ETA) with a set of seasonal factors to apply to the unadjusted data during that year. Concurrent with the implementation and release of the new seasonal factors, ETA incorporates revisions to the UI claims historical series caused by updates to the unadjusted data. For further questions on seasonal adjustment methodology, please see the [official release page for the UI claims seasonal adjustment factors](#) or contact BLS directly through the [Local Area Unemployment Statistics web contact form](#).

[Weekly Claims Archives](#)  
[Weekly Claims Data](#)

U.S. Department of Labor news materials are accessible at <http://www.dol.gov>. The Department's [Reasonable Accommodation Resource Center](#) converts Departmental information and documents into alternative formats, which include Braille and large print. For alternative format requests, please contact the Department at (202) 693-7828 (voice) or (800) 877-8339 (federal relay).

U.S. Department of Labor  
Employment and Training Administration  
Washington, D.C. 20210  
Release Number: USDL 22-691-NAT

Program Contacts:  
Kevin Stapleton: (202) 693-3009  
Media Contact: (202) 693-4676