



# News Release

Connect with DOL at <https://blog.dol.gov>



TRANSMISSION OF MATERIALS IN THIS RELEASE IS EMBARGOED UNTIL  
8:30 A.M. (Eastern) Thursday, January 28, 2021

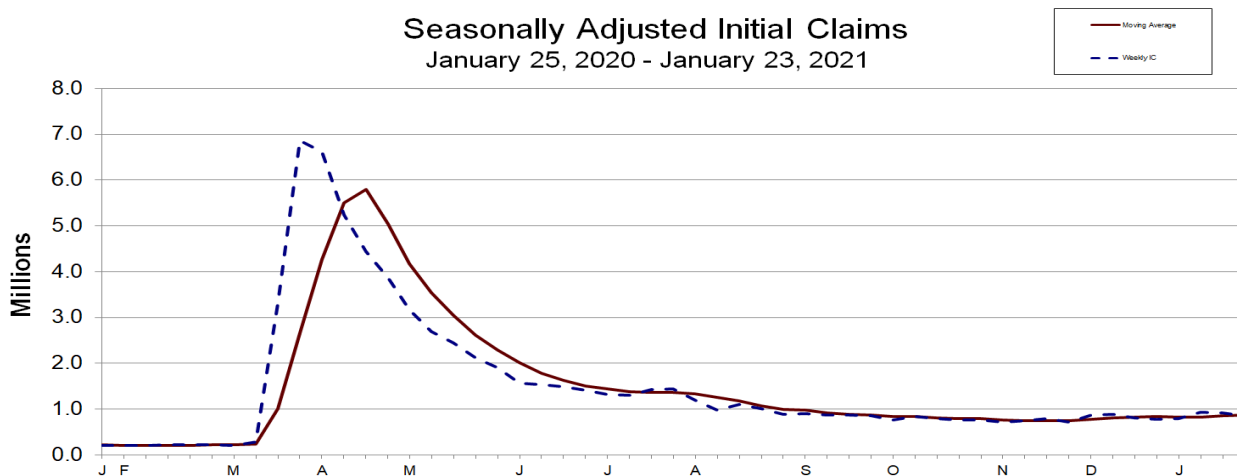
## UNEMPLOYMENT INSURANCE WEEKLY CLAIMS

### SEASONALLY ADJUSTED DATA

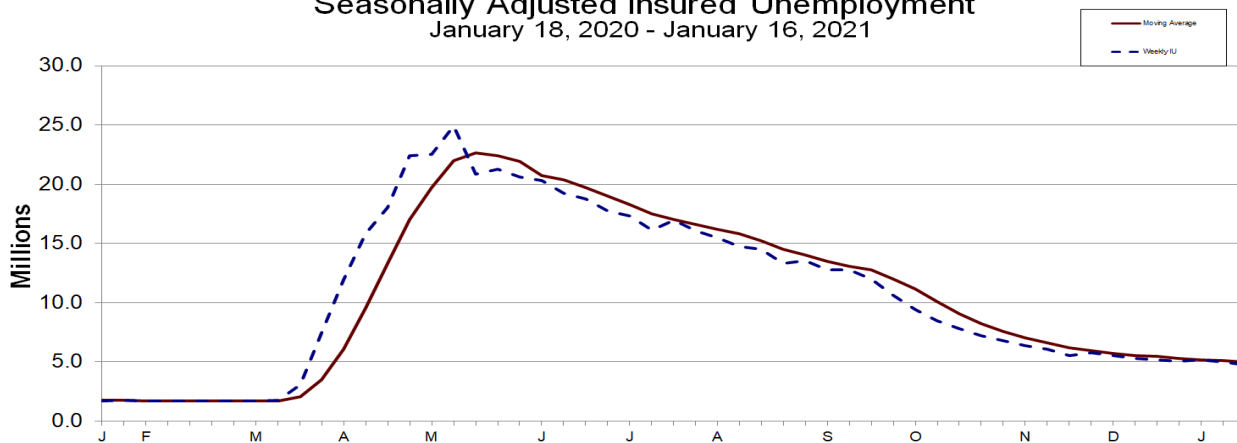
In the week ending January 23, the advance figure for seasonally adjusted **initial claims** was 847,000, a decrease of 67,000 from the previous week's revised level. The previous week's level was revised up by 14,000 from 900,000 to 914,000. The 4-week moving average was 868,000, an increase of 16,250 from the previous week's revised average. The previous week's average was revised up by 3,750 from 848,000 to 851,750.

The advance seasonally adjusted **insured unemployment rate** was 3.4 percent for the week ending January 16, a decrease of 0.1 percentage point from the previous week's revised rate. The previous week's rate was revised down by 0.1 from 3.6 to 3.5 percent. The advance number for seasonally adjusted **insured unemployment** during the week ending January 16 was 4,771,000, a decrease of 203,000 from the previous week's revised level. The previous week's level was revised down by 80,000 from 5,054,000 to 4,974,000. The 4-week moving average was 4,998,000, a decrease of 106,750 from the previous week's revised average. The previous week's average was revised down by 21,500 from 5,126,250 to 5,104,750.

Seasonally Adjusted Initial Claims  
January 25, 2020 - January 23, 2021



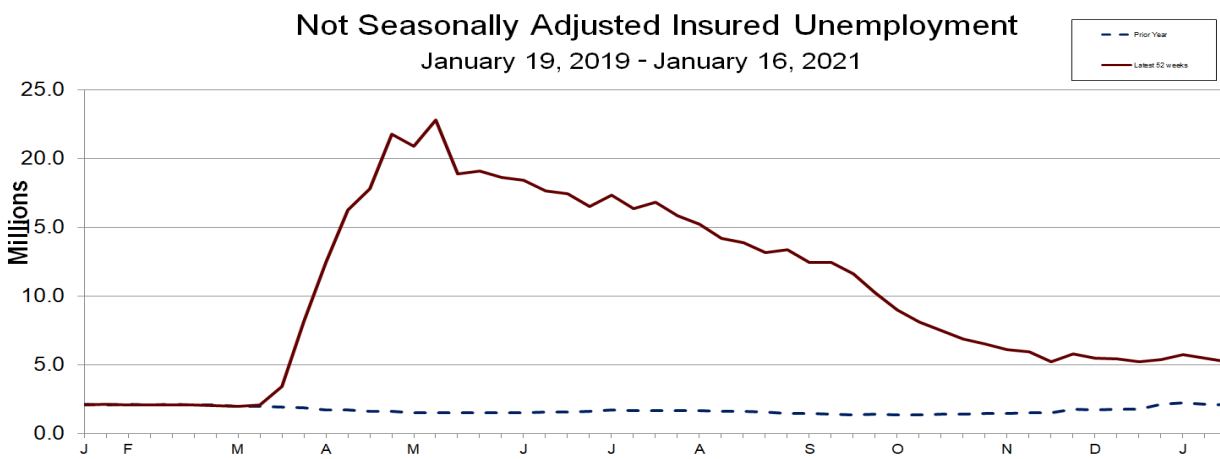
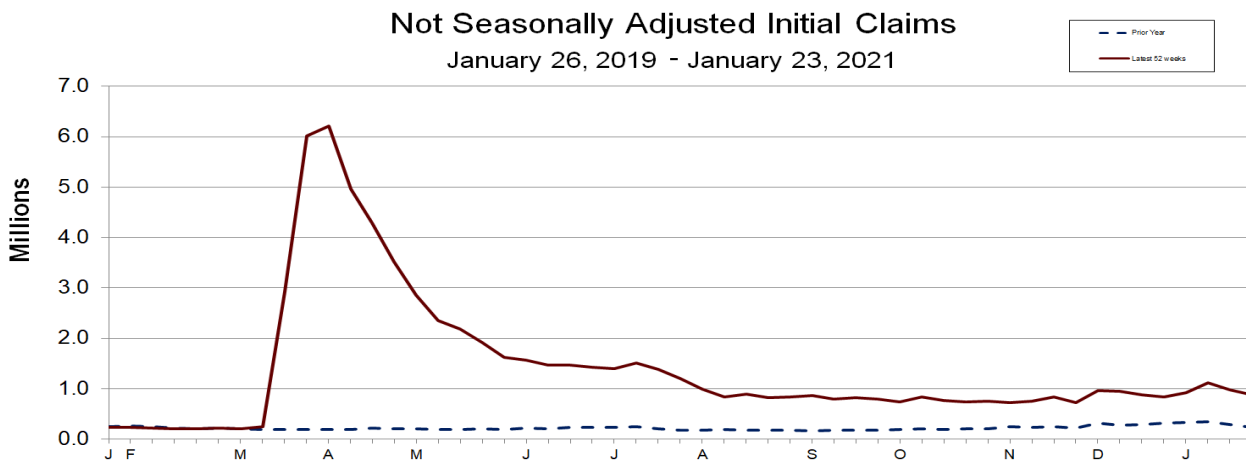
Seasonally Adjusted Insured Unemployment  
January 18, 2020 - January 16, 2021



**UNADJUSTED DATA**

The advance number of actual initial claims under state programs, unadjusted, totaled 873,966 in the week ending January 23, a decrease of 101,498 (or -10.4 percent) from the previous week. The seasonal factors had expected a decrease of 33,673 (or -3.5 percent) from the previous week. There were 229,002 initial claims in the comparable week in 2020. In addition, for the week ending January 23, 48 states reported 426,856 initial claims for Pandemic Unemployment Assistance.

The advance unadjusted insured unemployment rate was 3.7 percent during the week ending January 16, a decrease of 0.2 percentage point from the prior week. The advance unadjusted level of insured unemployment in state programs totaled 5,208,719, a decrease of 274,055 (or -5.0 percent) from the preceding week. The seasonal factors had expected a decrease of 71,477 (or -1.3 percent) from the previous week. A year earlier the rate was 1.4 percent and the volume was 2,079,050.



The total number of continued weeks claimed for benefits in all programs for the week ending January 9 was 18,282,090, an increase of 2,293,495 from the previous week. There were 2,171,827 weekly claims filed for benefits in all programs in the comparable week in 2020.

During the week ending January 9, Extended Benefits were available in the following 19 states: Alaska, California, Connecticut, District of Columbia, Georgia, Hawaii, Illinois, Massachusetts, Michigan, New Jersey, New Mexico, New York, Oregon, Pennsylvania, Puerto Rico, Rhode Island, the Virgin Islands, and Washington.

Initial claims for UI benefits filed by former Federal civilian employees totaled 2,175 in the week ending January 16, a decrease of 965 from the prior week. There were 1,429 initial claims filed by newly discharged veterans, an increase of 178 from the preceding week.

There were 18,066 continued weeks claimed filed by former Federal civilian employees the week ending January 9, a decrease of 558 from the previous week. Newly discharged veterans claiming benefits totaled 9,543, a decrease of 158 from the prior week.

During the week ending January 9, 50 states reported 7,334,193 continued weekly claims for Pandemic Unemployment Assistance benefits and 50 states reported 3,863,548 continued claims for Pandemic Emergency Unemployment Compensation benefits.

The highest insured unemployment rates in the week ending January 9 were in Kansas (7.7), Pennsylvania (7.0), the Virgin Islands (6.9), Alaska (6.4), Nevada (6.1), Michigan (5.6), Puerto Rico (5.6), Illinois (5.5), New Mexico (5.5), and Connecticut (5.4).

The largest increases in initial claims for the week ending January 16 were in Florida (+8,643), Maryland (+7,935), Kansas (+6,746), Ohio (+5,665), and Rhode Island (+2,998), while the largest decreases were in California (-65,383), New York (-10,936), Texas (-9,170), Pennsylvania (-8,503), and Washington (-7,877).

---

**UNEMPLOYMENT INSURANCE DATA FOR REGULAR STATE PROGRAMS**


---

<b>WEEK ENDING</b>	<b>January 23</b>	<b>January 16</b>	<b>Change</b>	<b>January 9</b>	<b>Prior Year<sup>1</sup></b>
Initial Claims (SA)	847,000	914,000	-67,000	927,000	212,000
Initial Claims (NSA)	873,966	975,464	-101,498	1,113,098	229,002
4-Wk Moving Average (SA)	868,000	851,750	+16,250	824,750	212,750

<b>WEEK ENDING</b>	<b>January 16</b>	<b>January 9</b>	<b>Change</b>	<b>January 2</b>	<b>Prior Year<sup>1</sup></b>
Insured Unemployment (SA)	4,771,000	4,974,000	-203,000	5,175,000	1,704,000
Insured Unemployment (NSA)	5,208,719	5,482,774	-274,055	5,760,721	2,079,050
4-Wk Moving Average (SA)	4,998,000	5,104,750	-106,750	5,191,750	1,743,250
Insured Unemployment Rate (SA) <sup>2</sup>	3.4%	3.5%	-0.1	3.6%	1.2%
Insured Unemployment Rate (NSA) <sup>2</sup>	3.7%	3.9%	-0.2	4.1%	1.4%

---

**INITIAL CLAIMS FILED IN FEDERAL PROGRAMS (UNADJUSTED)**


---

<b>WEEK ENDING</b>	<b>January 23</b>	<b>January 16</b>	<b>Change</b>	<b>January 9</b>
Pandemic Unemployment Assistance	426,856	447,328	-20,472	284,886

<b>WEEK ENDING</b>	<b>January 16</b>	<b>January 9</b>	<b>Change</b>	<b>Prior Year<sup>1</sup></b>
Federal Employees (UCFE)	2,175	3,140	-965	987
Newly Discharged Veterans (UCX)	1,429	1,251	+178	549

---

**CONTINUED WEEKS CLAIMED FILED FOR UI BENEFITS IN ALL PROGRAMS (UNADJUSTED)**


---

<b>WEEK ENDING</b>	<b>January 9</b>	<b>January 2</b>	<b>Change</b>	<b>Prior Year<sup>1</sup></b>
Regular State	5,446,086	5,727,359	-281,273	2,137,945
Federal Employees	18,066	18,624	-558	11,103
Newly Discharged Veterans	9,543	9,701	-158	5,713
Pandemic Unemployment Assistance <sup>3</sup>	7,334,193	5,707,397	+1,626,796	NA
Pandemic Emergency UC <sup>4</sup>	3,863,548	3,026,952	+836,596	NA
Extended Benefits <sup>5</sup>	1,505,566	1,409,525	+96,041	0
State Additional Benefits <sup>6</sup>	2,517	2,539	-22	5,302
STC / Workshare <sup>7</sup>	102,571	86,498	+16,073	11,764
<b>TOTAL<sup>8</sup></b>	<b>18,282,090</b>	<b>15,988,595</b>	<b>+2,293,495</b>	<b>2,171,827</b>

**FOOTNOTES**

SA - Seasonally Adjusted Data, NSA - Not Seasonally Adjusted Data Continued weeks claimed represent all weeks of benefits claimed during the week being reported, and do not represent weeks claimed by unique individuals.

1. Prior year is comparable to most recent data.
2. Most recent week used covered employment of 142,133,208 as denominator.
3. Information on the Pandemic Unemployment Assistance (PUA) program can be found in UIPL 16-20: [PUA Program information](#)
4. Information on the Pandemic Emergency Unemployment Compensation (PEUC) program can be found in Unemployment Insurance Program Letter (UIPL) 17-20: [PEUC Program information](#)
5. Information on the EB program can be found here: [EB Program information](#)
6. Some states maintain additional benefit programs for those claimants who exhaust regular benefits, and when applicable, extended benefits. Information on states that participate, and the extent of benefits paid, can be found starting on page 4-4 of this link: [Extensions and Special Programs PDF](#)
7. Information on STC/Worksharing can be found starting on page 4-8 of the following link: [Extensions and Special Programs PDF](#)
8. Totals include PUA Unemployment for the appropriate corresponding week.

## Advance State Claims - Not Seasonally Adjusted

STATE	Initial Claims Filed During Week Ended January 23			Insured Unemployment For Week Ended January 16		
	Advance	Prior Wk	Change	Advance	Prior Wk	Change
Alabama	10,535	11,980	-1,445	12,767	15,769	-3,002
Alaska	4,176	4,902	-726	18,721	19,101	-380
Arizona*	18,090	12,006	6,084	73,106	71,369	1,737
Arkansas	2,274	4,774	-2,500	20,291	22,703	-2,412
California	53,299	117,242	-63,943	822,574	894,354	-71,780
Colorado	10,720	12,923	-2,203	85,849	89,537	-3,688
Connecticut	10,529	10,563	-34	85,321	85,625	-304
Delaware	2,352	3,000	-648	14,884	14,105	779
District of Columbia	2,186	1,574	612	23,883	25,612	-1,729
Florida	57,824	39,226	18,598	136,996	157,201	-20,205
Georgia	26,657	35,912	-9,255	152,301	172,339	-20,038
Hawaii	3,935	4,502	-567	25,286	28,124	-2,838
Idaho	3,819	3,714	105	13,440	13,864	-424
Illinois	108,808	95,472	13,336	337,148	315,325	21,823
Indiana	12,791	14,255	-1,464	94,314	91,907	2,407
Iowa	5,510	6,380	-870	47,154	46,014	1,140
Kansas	82,944	73,069	9,875	79,870	102,561	-22,691
Kentucky	7,715	11,932	-4,217	42,903	42,642	261
Louisiana	11,086	16,340	-5,254	61,287	63,888	-2,601
Maine	2,678	3,312	-634	17,097	17,360	-263
Maryland	30,517	31,019	-502	72,166	76,687	-4,521
Massachusetts	20,794	27,069	-6,275	165,306	172,686	-7,380
Michigan	16,679	21,830	-5,151	184,399	227,934	-43,535
Minnesota	11,562	13,739	-2,177	131,622	138,053	-6,431
Mississippi	6,471	8,167	-1,696	28,475	31,703	-3,228
Missouri	9,059	12,841	-3,782	52,904	56,836	-3,932
Montana	2,055	2,292	-237	18,304	17,535	769
Nebraska	2,649	3,118	-469	15,930	16,501	-571
Nevada	10,697	10,474	223	76,464	81,195	-4,731
New Hampshire	3,356	4,169	-813	28,275	29,080	-805
New Jersey	13,916	16,769	-2,853	140,128	144,163	-4,035
New Mexico	4,690	6,402	-1,712	42,197	43,396	-1,199
New York	64,793	62,185	2,608	440,532	449,881	-9,349
North Carolina	11,508	14,117	-2,609	64,009	64,484	-475
North Dakota	1,298	1,901	-603	10,349	9,196	1,153
Ohio	47,764	43,000	4,764	206,820	207,466	-646
Oklahoma	5,302	7,144	-1,842	20,267	40,059	-19,792
Oregon	8,447	10,523	-2,076	95,028	98,779	-3,751
Pennsylvania	25,053	32,921	-7,868	323,886	348,134	-24,248
Puerto Rico	1,287	1,694	-407	40,163	46,936	-6,773
Rhode Island	11,279	10,797	482	23,892	23,980	-88
South Carolina	5,043	6,319	-1,276	45,947	49,090	-3,143
South Dakota	472	750	-278	4,957	5,675	-718
Tennessee	12,050	19,318	-7,268	50,021	53,163	-3,142
Texas	47,362	55,551	-8,189	343,683	365,485	-21,802
Utah	2,994	3,304	-310	16,451	16,412	39
Vermont	1,225	1,853	-628	13,264	13,257	7
Virgin Islands	15	58	-43	1,710	2,546	-836
Virginia	21,599	21,073	526	68,620	63,839	4,781
Washington	17,485	20,401	-2,916	181,269	168,151	13,118
West Virginia	2,592	3,407	-815	23,144	21,833	1,311
Wisconsin	15,124	17,015	-1,891	107,332	104,131	3,201
Wyoming	901	1,166	-265	6,013	5,108	905
US Total	873,966	975,464	-101,498	5,208,719	5,482,774	-274,055

Note: Advance claims are not directly comparable to claims reported in prior weeks. Advance claims are reported by the state liable for paying the unemployment compensation, whereas previous weeks reported claims reflect claimants by state of residence. In addition, claims reported as "workshare equivalent" in the previous week are added to the advance claims as a proxy for the current week's "workshare equivalent" activity.

\*Denotes state estimate.

## Seasonally Adjusted US Weekly UI Claims (in thousands)

Week Ending	Initial Claims	Change from		Insured Unemployment	Change from		IUR
		Prior Week	4-Week Average		Prior Week	4-Week Average	
January 18, 2020	220	13	214.75	1,704	-31	1,743.25	1.2
January 25, 2020	212	-8	212.75	1,753	49	1,737.75	1.2
February 1, 2020	201	-11	210.00	1,678	-75	1,717.50	1.2
February 8, 2020	204	3	209.25	1,729	51	1,716.00	1.2
February 15, 2020	215	11	208.00	1,693	-36	1,713.25	1.2
February 22, 2020	220	5	210.00	1,720	27	1,705.00	1.2
February 29, 2020	217	-3	214.00	1,699	-21	1,710.25	1.2
March 7, 2020	211	-6	215.75	1,702	3	1,703.50	1.2
March 14, 2020	282	71	232.50	1,784	82	1,726.25	1.2
March 21, 2020	3,307	3,025	1,004.25	3,059	1,275	2,061.00	2.1
March 28, 2020	6,867	3,560	2,666.75	7,446	4,387	3,497.75	5.1
April 4, 2020	6,615	-252	4,267.75	11,914	4,468	6,050.75	8.2
April 11, 2020	5,237	-1,378	5,506.50	15,819	3,905	9,559.50	10.9
April 18, 2020	4,442	-795	5,790.25	18,011	2,192	13,297.50	12.4
April 25, 2020	3,867	-575	5,040.25	22,377	4,366	17,030.25	15.4
May 2, 2020	3,176	-691	4,180.50	22,548	171	19,688.75	15.5
May 9, 2020	2,687	-489	3,543.00	24,912	2,364	21,962.00	17.1
May 16, 2020	2,446	-241	3,044.00	20,841	-4,071	22,669.50	14.3
May 23, 2020	2,123	-323	2,608.00	21,268	427	22,392.25	14.6
May 30, 2020	1,897	-226	2,288.25	20,606	-662	21,906.75	14.1
June 6, 2020	1,566	-331	2,008.00	20,289	-317	20,751.00	13.9
June 13, 2020	1,540	-26	1,781.50	19,231	-1,058	20,348.50	13.2
June 20, 2020	1,482	-58	1,621.25	18,760	-471	19,721.50	12.9
June 27, 2020	1,408	-74	1,499.00	17,760	-1,000	19,010.00	12.2
July 4, 2020	1,310	-98	1,435.00	17,304	-456	18,263.75	11.8
July 11, 2020	1,308	-2	1,377.00	16,151	-1,153	17,493.75	11.1
July 18, 2020	1,422	114	1,362.00	16,951	800	17,041.50	11.6
July 25, 2020	1,435	13	1,368.75	16,090	-861	16,624.00	11.0
August 1, 2020	1,191	-244	1,339.00	15,480	-610	16,168.00	10.6
August 8, 2020	971	-220	1,254.75	14,759	-721	15,820.00	10.1
August 15, 2020	1,104	133	1,175.25	14,492	-267	15,205.25	9.9
August 22, 2020	1,011	-93	1,069.25	13,292	-1,200	14,505.75	9.1
August 29, 2020	884	-127	992.50	13,544	252	14,021.75	9.3
September 5, 2020	893	9	973.00	12,747	-797	13,518.75	8.7
September 12, 2020	866	-27	913.50	12,747	0	13,082.50	8.7
September 19, 2020	873	7	879.00	11,979	-768	12,754.25	8.2
September 26, 2020	849	-24	870.25	10,594	-1,385	12,016.75	7.2
October 3, 2020	767	-82	838.75	9,398	-1,196	11,179.50	6.4
October 10, 2020	842	75	832.75	8,472	-926	10,110.75	5.8
October 17, 2020	797	-45	813.75	7,823	-649	9,071.75	5.3
October 24, 2020	758	-39	791.00	7,222	-601	8,228.75	4.9
October 31, 2020	757	-1	788.50	6,798	-424	7,578.75	4.6
November 7, 2020	711	-46	755.75	6,370	-428	7,053.25	4.3
November 14, 2020	748	37	743.50	6,089	-281	6,619.75	4.2
November 21, 2020	787	39	750.75	5,527	-562	6,196.00	3.8
November 28, 2020	716	-71	740.50	5,781	254	5,941.75	3.9
December 5, 2020	862	146	778.25	5,507	-274	5,726.00	3.8
December 12, 2020	892	30	814.25	5,322	-185	5,534.25	3.6
December 19, 2020	806	-86	819.00	5,198	-124	5,452.00	3.5
December 26, 2020	782	-24	835.50	5,072	-126	5,274.75	3.5
January 2, 2021	784	2	816.00	5,175	103	5,191.75	3.6
January 9, 2021	927	143	824.75	4,974	-201	5,104.75	3.5
January 16, 2021	914	-13	851.75	4,771	-203	4,998.00	3.4
January 23, 2021	847	-67	868.00				

## Pandemic Unemployment Assistance Claims - Not Seasonally Adjusted

STATE	PUA Initial Claims Filed During Week Ended January 23			PUA Continued Claims For Week Ended Jan 9		
	Advance	Prior Wk	Change	Jan 9	Jan 2	Change
Alabama	1,985	2,045	-60	29,814	26,313	3,501
Alaska	443	346	97	7,761	9,662	-1,901
Arizona	2,947	3,141	-194	75,733	65,070	10,663
Arkansas	53	139	-86	10,685	0	10,685
California	38,982	110,857	-71,875	792,794	626,879	165,915
Colorado	0	0	0	0	0	0
Connecticut	516	483	33	34,592	38,594	-4,002
Delaware	370	108	262	5,197	4,893	304
District of Columbia	147	104	43	16,162	15,317	845
Florida	22,507	23,406	-899	0	0	0
Georgia	2,563	2,921	-358	110,351	82,382	27,969
Hawaii	1,114	1,356	-242	112,596	41,476	71,120
Idaho	46	78	-32	11,088	10,881	207
Illinois	32,288	29,040	3,248	175,003	191,570	-16,567
Indiana	0	0	0	48,616	78,051	-29,435
Iowa	916	1,061	-145	13,861	13,603	258
Kansas	5,416	7,574	-2,158	37,825	31,124	6,701
Kentucky	17,624	15,338	2,286	15,178	11,373	3,805
Louisiana	5,177	8,639	-3,462	118,888	89,461	29,427
Maine	392	1,040	-648	14,317	15,130	-813
Maryland	11,314	9,897	1,417	180,374	165,582	14,792
Massachusetts	5,491	6,351	-860	515,913	257,491	258,422
Michigan	58	3,725	-3,667	200,426	282,284	-81,858
Minnesota	0	1	-1	48,032	49,923	-1,891
Mississippi	1,449	2,501	-1,052	37,593	28,965	8,628
Missouri	2,514	4,302	-1,788	44,917	46,657	-1,740
Montana	657	738	-81	41,178	13,587	27,591
Nebraska	274	179	95	3,309	3,751	-442
Nevada	111,662	56,578	55,084	75,897	75,105	792
New Hampshire	531	82	449	10,938	7,248	3,690
New Jersey	4,670	7,253	-2,583	356,708	371,881	-15,173
New Mexico	1,312	1,630	-318	29,162	9,818	19,344
New York	45,125	36,829	8,296	1,300,737	1,297,406	3,331
North Carolina	9,929	10,834	-905	133,520	128,453	5,067
North Dakota	586	364	222	356	1,129	-773
Ohio	0	0	0	656,899	118,101	538,798
Oklahoma	768	45	723	7,606	6,314	1,292
Oregon	995	6,851	-5,856	171,236	142,854	28,382
Pennsylvania	56,659	42,702	13,957	320,680	345,962	-25,282
Puerto Rico	7,820	13,891	-6,071	461,008	159,890	301,118
Rhode Island	6,662	3,161	3,501	41,226	42,031	-805
South Carolina	4,696	5,741	-1,045	76,710	45,412	31,298
South Dakota	2	10	-8	140	378	-238
Tennessee	3,633	4,563	-930	94,901	77,248	17,653
Texas	5,647	6,574	-927	563,883	379,058	184,825
Utah	982	1,436	-454	4,112	3,794	318
Vermont	72	84	-12	8,610	8,429	181
Virgin Islands	24	67	-43	0	0	0
Virginia	2,760	5,251	-2,491	181,950	132,527	49,423
Washington	3,832	4,486	-654	109,267	113,598	-4,331
West Virginia	1,503	1,828	-325	8,535	15,404	-6,869
Wisconsin	1,743	1,698	45	17,815	25,005	-7,190
Wyoming	0	0	0	94	333	-239
US Total	426,856	447,328	-20,472	7,334,193	5,707,397	1,626,796

Note: Information on the Pandemic Unemployment Assistance (PUA) program can be found in UIPL 16-20: [PUA Program information](#). Backdated claims may be included in these figures.

## Pandemic Emergency Unemployment Compensation Continued Claims - Not Seasonally Adjusted

STATE	PEUC Claims Filed During Weeks Ended:				
	January 9	January 2	Change	December 26	December 19
Alabama	56,610	53,753	2,857	17,813	18,542
Alaska	6,460	6,697	-237	6,704	7,088
Arizona	68,262	66,104	2,158	59,508	57,448
Arkansas	2,820	2,410	410	9,395	9,378
California	1,082,797	304,888	777,909	1,299,995	1,283,061
Colorado	0	36,725	-36,725	70,781	70,658
Connecticut	61,863	58,448	3,415	52,903	62,089
Delaware	10,208	8,777	1,431	10,653	11,975
District of Columbia	17,670	18,744	-1,074	22,122	25,260
Florida	0	0	0	0	0
Georgia	0	0	0	0	0
Hawaii	38,908	36,576	2,332	51,398	50,204
Idaho	3,685	3,424	261	3,355	3,467
Illinois	192,069	210,534	-18,465	240,206	241,532
Indiana	13,950	28,847	-14,897	51,016	57,969
Iowa	14,751	17,596	-2,845	19,643	21,185
Kansas	953	1,111	-158	14,555	17,685
Kentucky	31,635	29,992	1,643	30,989	31,780
Louisiana	55,020	56,981	-1,961	49,891	50,099
Maine	17,850	9,040	8,810	9,171	10,541
Maryland	74,356	67,667	6,689	48,749	63,166
Massachusetts	120,621	126,943	-6,322	145,566	162,349
Michigan	95,654	96,519	-865	145,310	211,685
Minnesota	127,336	121,418	5,918	77,111	80,037
Mississippi	33,124	25,898	7,226	14,806	14,374
Missouri	25,372	23,662	1,710	26,275	26,020
Montana	7,644	6,653	991	5,143	5,365
Nebraska	1,635	668	967	3,986	4,149
Nevada	74,167	71,599	2,568	86,101	95,439
New Hampshire	9,089	7,160	1,929	7,758	7,547
New Jersey	127,219	143,198	-15,979	148,479	170,760
New Mexico	15,307	3,972	11,335	33,676	35,183
New York	668,401	654,902	13,499	642,002	685,857
North Carolina	106,703	115,694	-8,991	101,550	108,541
North Dakota	3,925	4,478	-553	5,047	4,274
Ohio	58,645	65,764	-7,119	75,860	90,149
Oklahoma	16,287	15,012	1,275	0	22,957
Oregon	42,435	46,753	-4,318	52,682	58,268
Pennsylvania	179,183	184,422	-5,239	217,528	203,101
Puerto Rico	51,577	39,352	12,225	28,986	116,421
Rhode Island	15,712	13,096	2,616	14,449	16,477
South Carolina	72,522	73,914	-1,392	68,453	71,323
South Dakota	702	726	-24	750	677
Tennessee	63,520	35,814	27,706	32,488	33,582
Texas	17,256	17,244	12	10,784	16,166
Utah	9,383	6,403	2,980	6,381	6,700
Vermont	12,761	10,315	2,446	8,082	8,589
Virgin Islands	35	28	7	15	17
Virginia	105,850	42,882	62,968	83,541	83,933
Washington	4,735	5,783	-1,048	5,487	4,594
West Virginia	19,632	16,070	3,562	14,298	16,170
Wisconsin	27,183	31,936	-4,753	31,797	34,336
Wyoming	66	360	-294	3,023	3,246
US Total	3,863,548	3,026,952	836,596	4,166,261	4,491,413

Note: Information on the Pandemic Emergency Unemployment Compensation (PEUC) program can be found in Unemployment Insurance Program Letter (UIPL) 17-20: [PEUC Program information](#)



## Extended Benefits (EB) Continued Claims - Not Seasonally Adjusted

STATE	EB Claims Filed During Weeks Ended:		
	January 9	January 2	Change
Alabama	0	0	0
Alaska	2,267	1,972	295
Arizona	9,391	10,389	-998
Arkansas	95	152	-57
California	344,373	394,048	-49,675
Colorado	88	89	-1
Connecticut	17,999	15,273	2,726
Delaware	1	40	-39
District of Columbia	13	36	-23
Florida	1,142	1,226	-84
Georgia	0	0	0
Hawaii	82	151	-69
Idaho	54	112	-58
Illinois	105,636	84,095	21,541
Indiana	61	62	-1
Iowa	100	121	-21
Kansas	562	693	-131
Kentucky	0	0	0
Louisiana	4,807	5,075	-268
Maine	165	149	16
Maryland	775	677	98
Massachusetts	98,987	76,933	22,054
Michigan	149,740	112,017	37,723
Minnesota	287	945	-658
Mississippi	251	324	-73
Missouri	139	194	-55
Montana	68	71	-3
Nebraska	21	4	17
Nevada	52,936	47,876	5,060
New Hampshire	405	363	42
New Jersey	83,554	85,160	-1,606
New Mexico	31,503	23,493	8,010
New York	205,486	205,171	315
North Carolina	34,679	35,018	-339
North Dakota	8	10	-2
Ohio	409	1,478	-1,069
Oklahoma	0	0	0
Oregon	21,929	22,369	-440
Pennsylvania	32,495	27,819	4,676
Puerto Rico	4,849	1,868	2,981
Rhode Island	12,662	11,250	1,412
South Carolina	217	492	-275
South Dakota	0	0	0
Tennessee	239	19	220
Texas	222,382	183,601	38,781
Utah	0	0	0
Vermont	94	98	-4
Virgin Islands	0	0	0
Virginia	1,197	1,481	-284
Washington	61,488	54,822	6,666
West Virginia	15	22	-7
Wisconsin	1,890	2,266	-376
Wyoming	9	34	-25
US Total	1,505,550	1,409,558	95,992

Note: Information on the EB program can be found here: [EB Program information](#)

INITIAL CLAIMS FILED DURING WEEK ENDED  
JANUARY 16

INSURED UNEMPLOYMENT FOR WEEK ENDED  
JANUARY 9

STATE NAME	CHANGE FROM					CHANGE FROM					ALL PROGRAMS EXCLUDING RAILROAD RETIREMENT	
	STATE	LAST WEEK	YEAR AGO	UCFE <sup>1</sup>	UCX <sup>1</sup>	STATE (%) <sup>2</sup>	LAST WEEK	YEAR AGO	UCFE <sup>1</sup>	UCX <sup>1</sup>		
Alabama	11,980	-2,104	9,497	83	21	15,769	0.8	-912	-1,633	102	29	15,900
Alaska	4,902	1,002	3,721	13	1	19,101	6.4	-601	9,117	274	29	19,404
Arizona	12,006	-303	7,854	10	3	71,369	2.5	-5,449	52,948	299	182	71,850
Arkansas	4,774	-1,597	3,045	8	4	22,703	1.9	-2,049	9,474	156	37	22,896
California	117,242	-65,383	52,384	326	92	894,354	5.3	-79,554	517,407	3,554	1,775	899,683
Colorado	12,923	-1,315	10,401	68	26	89,537	3.4	-57,751	68,433	336	281	90,154
Connecticut	10,563	277	6,787	35	12	85,625	5.4	750	43,142	230	50	85,905
Delaware	3,000	-682	2,170	4	3	14,105	3.1	-1,677	8,138	38	19	14,162
District of Columbia	1,574	-302	980	32	0	25,612	4.5	-534	18,341	404	8	26,024
Florida	39,226	8,643	33,138	122	92	157,201	1.8	-17,343	122,483	410	313	157,924
Georgia	35,912	-1,127	27,751	103	43	172,339	4.0	-13,248	140,260	631	405	173,375
Hawaii	4,502	-556	3,268	10	15	28,124	4.8	-478	21,501	208	133	28,465
Idaho	3,714	-971	1,542	19	1	13,864	1.9	-526	1,933	319	9	14,192
Illinois	95,472	528	80,665	22	9	315,325	5.5	-34,320	181,358	639	245	316,209
Indiana	14,255	-3,469	10,514	39	16	91,907	3.1	-2,074	70,281	230	93	92,230
Iowa	6,380	-986	2,765	14	5	46,014	3.1	-2,539	16,389	119	43	46,176
Kansas	73,069	6,746	70,667	1	3	102,561	7.7	10,259	91,923	72	37	102,670
Kentucky	11,932	533	8,848	4	7	42,642	2.3	-1,565	18,576	89	131	42,862
Louisiana	16,340	-5,284	14,332	37	15	63,888	3.5	-23,622	47,812	106	25	64,019
Maine	3,312	-441	2,353	1	1	17,360	3.0	213	8,699	60	11	17,431
Maryland	31,019	7,935	27,280	55	8	76,687	3.2	1,450	47,484	253	79	77,019
Massachusetts	27,069	-4,863	20,129	50	22	172,686	5.0	-2,944	97,610	379	134	173,199
Michigan	21,830	-2,824	11,526	55	6	227,934	5.6	32,758	143,798	288	123	228,345
Minnesota	13,739	-3,562	9,276	8	7	138,053	5.0	-14,171	75,425	216	112	138,381
Mississippi	8,167	-1,705	7,032	6	3	31,703	2.9	-873	22,899	89	17	31,809
Missouri	12,841	-3,857	7,903	3	2	56,836	2.2	3,093	26,891	96	31	56,963
Montana	2,292	-802	1,056	35	3	17,535	3.9	-887	6,281	558	17	18,110
Nebraska	3,118	-2,096	2,130	9	3	16,501	1.7	1,710	11,561	36	12	16,549
Nevada	10,474	963	8,023	10	0	81,195	6.1	2,402	61,867	194	84	81,473
New Hampshire	4,169	310	3,556	6	4	29,080	4.6	1,914	24,865	54	11	29,145
New Jersey	16,769	-5,067	6,041	46	6	144,163	3.7	-12,205	35,738	442	302	144,907
New Mexico	6,402	-5,112	5,455	8	0	43,396	5.5	-1,461	33,476	429	80	43,905
New York	62,185	-10,936	44,362	27	38	449,881	5.0	-8,910	285,293	357	433	450,671
North Carolina	14,117	-1,605	9,900	60	54	64,484	1.5	-1,886	42,237	261	257	65,002
North Dakota	1,901	-45	1,116	11	1	9,196	2.3	617	2,387	16	9	9,221
Ohio	43,000	5,665	35,135	12	32	207,466	3.9	-4,356	134,611	270	248	207,984
Oklahoma	7,144	127	5,163	33	8	40,059	2.6	-1,416	22,592	109	72	40,240
Oregon	10,523	-2,373	6,472	101	16	98,779	5.3	-828	67,175	1,006	127	99,912
Pennsylvania	32,921	-8,503	16,703	214	53	348,134	7.0	-10,692	205,808	1,334	428	349,896
Puerto Rico	1,694	-241	-1,430	1	2	46,936	5.6	-1,659	24,645	220	68	47,224
Rhode Island	10,797	2,998	9,603	8	4	23,980	5.3	965	12,993	76	21	24,077
South Carolina	6,319	-1,729	3,193	12	16	49,090	2.4	-1,955	30,310	44	84	49,218
South Dakota	750	-235	412	10	2	5,675	1.4	-524	2,680	102	27	5,804
Tennessee	19,318	-2,636	16,225	38	21	53,163	1.6	-5,782	32,722	72	51	53,286
Texas	55,551	-9,170	39,768	250	702	365,485	3.0	7,839	220,359	1,184	1,936	368,605
Utah	3,304	-521	1,846	64	5	16,412	1.1	-47	4,351	295	16	16,723
Vermont	1,853	23	1,098	1	0	13,257	4.6	751	8,296	24	2	13,283
Virgin Islands	58	9	18	0	0	2,546	6.9	710	1,984	0	0	2,546
Virginia	21,073	-7,154	18,242	15	7	63,839	1.7	152	41,621	318	234	64,391
Washington	20,401	-7,877	11,322	34	23	168,151	5.1	-14,136	102,248	627	567	169,345
West Virginia	3,407	-246	1,512	5	3	21,833	3.4	-1,003	4,152	166	36	22,035
Wisconsin	17,015	-5,565	10,627	23	6	104,131	3.8	-13,193	59,355	199	62	104,392
Wyoming	1,166	-149	530	14	3	5,108	2.0	-360	1,807	76	8	5,192
Totals	975,464	-137,634	693,906	2,175	1,429	5,482,774	3.9	-277,947	3,342,103	18,066	9,543	5,510,383

Figures appearing in columns showing over-the-week changes reflect all revisions in data for prior week submitted by state agencies.

1. The Unemployment Compensation program for Federal Employees (UCFE) and the Unemployment Compensation for Ex-servicemembers (UCX) exclude claims filed jointly under other programs to avoid duplication.
2. Rate is not seasonally adjusted. The source of U.S. total covered employment is BLS.

---

**UNADJUSTED INITIAL CLAIMS FOR WEEK ENDED JANUARY 16, 2021**

---

**STATES WITH AN INCREASE OF MORE THAN 1,000**

---

<b>State</b>	<b>Change</b>	<b>State Supplied Comment</b>
FL	+8,643	Layoffs in construction and manufacturing industries.
MD	+7,935	No comment.
KS	+6,746	No comment.
OH	+5,665	No comment.
RI	+2,998	Layoffs in the health care and social assistance, educational services, finance and insurance, manufacturing, and retail trade industries.

**STATES WITH A DECREASE OF MORE THAN 1,000**

---

<b>State</b>	<b>Change</b>	<b>State Supplied Comment</b>
CA	-65,383	Fewer layoffs in the service industry.
NY	-10,936	Fewer layoffs in the transportation and warehousing, construction, and information industry.
TX	-9,170	No comment.
PA	-8,503	Fewer layoffs in the accommodation and food service, construction, transportation and warehousing, arts, entertainment, and recreation, and manufacturing industries.
VA	-7,154	No comment.
LA	-5,284	No comment.
NM	-5,112	No comment.
NJ	-5,067	No comment.
MA	-4,863	No comment.
MO	-3,857	Fewer layoffs in the construction, accommodation and food services, and administrative and support and waste management and remediation services industries.
MN	-3,562	No comment.
IN	-3,469	No comment.
MI	-2,824	Fewer layoffs in the manufacturing industry.
TN	-2,636	No comment.
AL	-2,104	Fewer layoffs in the manufacturing, accommodation and food service, administrative and support and waste management and remediation services, manufacturing, retail trade, construction, and health care and social assistance industries.
SC	-1,729	No comment.
MS	-1,705	No comment.
NC	-1,605	Fewer layoffs in the accommodation and food services, administrative and support and waste management and remediation services, and educational services industries.
AR	-1,597	No comment.
CO	-1,315	No comment.
GA	-1,127	Fewer layoffs in the manufacturing, health care and social assistance, and construction industries.

## TECHNICAL NOTES

This news release presents the weekly unemployment insurance (UI) claims reported by each state's unemployment insurance program offices. These claims may be used for monitoring workload volume, assessing state program operations and for assessing labor market conditions. States initially report claims directly taken by the state liable for the benefit payments, regardless of where the claimant who filed the claim resided. These are the basis for the advance initial claims and continued claims reported each week. These data come from ETA 538, Advance Weekly Initial and Continued Claims Report. The following week initial claims and continued claims are revised based on a second reporting by states that reflect the claimants by state of residence. These data come from the ETA 539, Weekly Claims and Extended Benefits Trigger Data Report.

### A. Initial Claims

An initial claim is a claim filed by an unemployed individual after a separation from an employer. The claimant requests a determination of basic eligibility for the UI program. When an initial claim is filed with a state, certain programmatic activities take place and these result in activity counts including the count of initial claims. The count of U.S. initial claims for unemployment insurance is a leading economic indicator because it is an indication of emerging labor market conditions in the country. However, these are weekly administrative data which are difficult to seasonally adjust, making the series subject to some volatility.

### B. Continued Weeks Claimed

A person who has already filed an initial claim and who has experienced a week of unemployment then files a continued claim to claim benefits for that week of unemployment. On a weekly basis, continued claims are also referred to as insured unemployment, as continued claims reflect a good approximation of the current number of insured unemployed workers filing for UI benefits. The count of U.S. continued weeks claimed is also a good indicator of labor market conditions. While continued claims are not a leading indicator (they roughly coincide with economic cycles at their peaks and lag at cycle troughs), they provide confirming evidence of the direction of the U.S. economy.

### C. Seasonal Adjustments and Annual Revisions

Over the course of a year, the weekly changes in the levels of initial claims and continued claims undergo regularly occurring fluctuations. These fluctuations may result from seasonal changes in weather, major holidays, the opening and closing of schools, or other similar events. Because these seasonal events follow a more or less regular pattern each year, their influence on the level of a series can be tempered by adjusting for regular seasonal variation. These adjustments make trend and cycle developments easier to spot. At the beginning of each calendar year, the Bureau of Labor Statistics provides the Employment and Training Administration (ETA) with a set of seasonal factors to apply to the unadjusted data during that year. Concurrent with the implementation and release of the new seasonal factors, ETA incorporates revisions to the UI claims historical series caused by updates to the unadjusted data.

#### [Weekly Claims Archives](#)

#### [Weekly Claims Data](#)

U.S. Department of Labor news materials are accessible at <http://www.dol.gov>. The Department's [Reasonable Accommodation Resource Center](#) converts Departmental information and documents into alternative formats, which include Braille and large print. For alternative format requests, please contact the Department at (202) 693-7828 (voice) or (800) 877-8339 (federal relay).

U.S. Department of Labor  
Employment and Training Administration  
Washington, D.C. 20210  
Release Number: USDL 21-141-NAT

Program Contacts:  
Thomas Stengle: (202) 693-2991  
Media Contact: (202) 693-4676