



News Release

Connect with DOL at
<http://social.dol.gov!>



U.S. Department of Labor
Employment and Training Administration
Washington, D.C.
Release Number: USDL 14-1256-NAT

Program Contacts:
Tom Stengle (202) 693-2991
Tony Sznoluch (202) 693-3176
Media Contact: (202) 693-4676

TRANSMISSION OF MATERIALS IN THIS RELEASE IS EMBARGOED UNTIL
8:30 A.M. (Eastern) Thursday, July 3, 2014

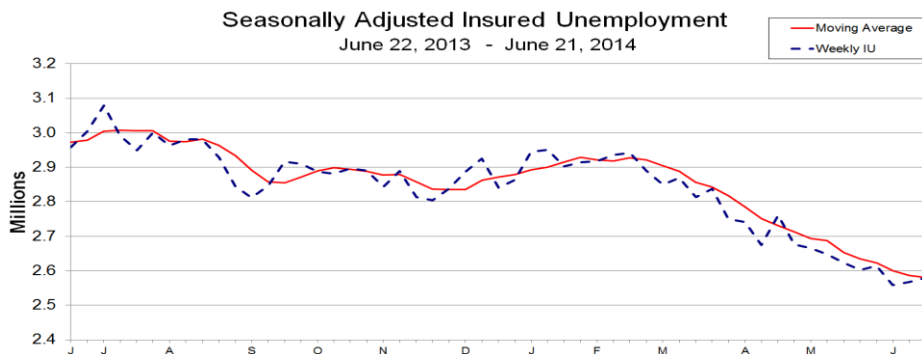
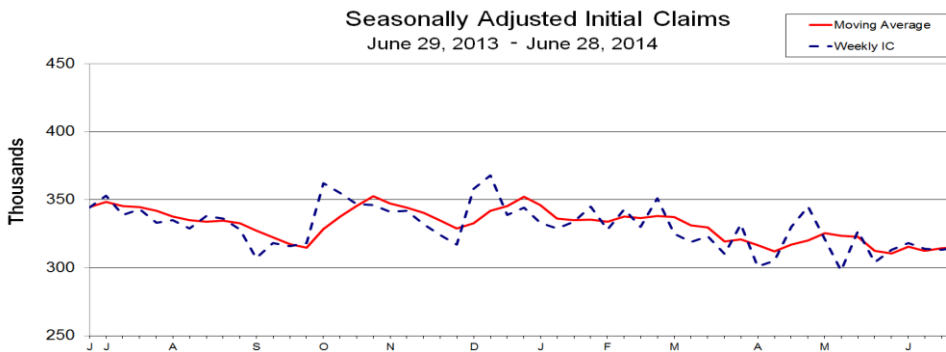
UNEMPLOYMENT INSURANCE WEEKLY CLAIMS

SEASONALLY ADJUSTED DATA

In the week ending June 28, the advance figure for seasonally adjusted **initial claims** was 315,000, an increase of 2,000 from the previous week's revised level. The previous week's level was revised up by 1,000 from 312,000 to 313,000. The 4-week moving average was 315,000, an increase of 500 from the previous week's revised average. The previous week's average was revised up by 250 from 314,250 to 314,500.

There were no special factors impacting this week's initial claims.

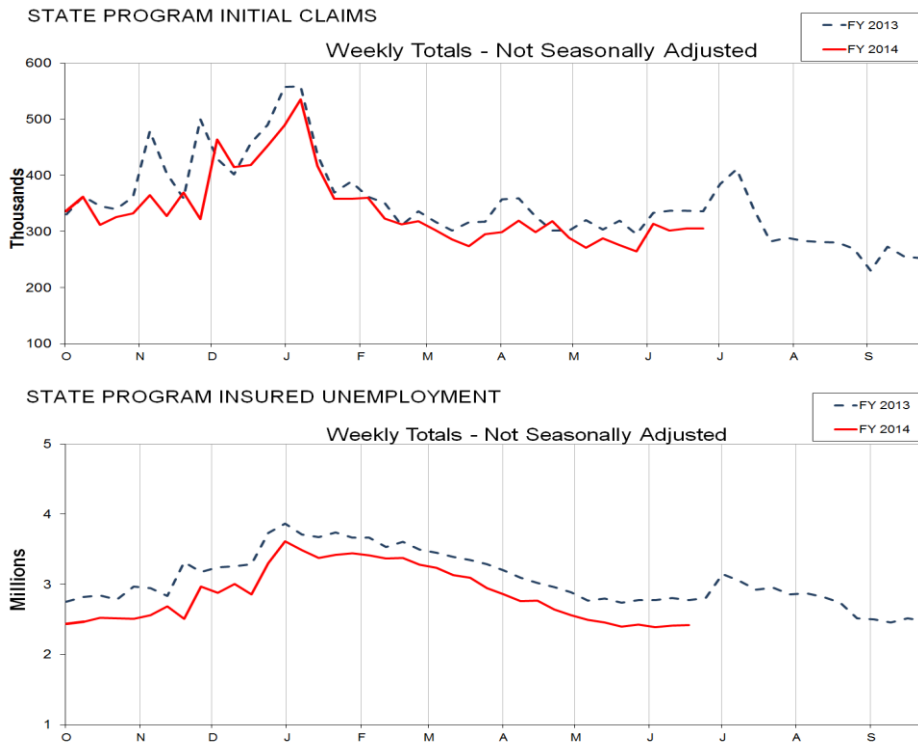
The advance seasonally adjusted **insured unemployment rate** was 2.0 percent for the week ending June 21, unchanged from the previous week's unrevised rate. The advance number for seasonally adjusted **insured unemployment** during the week ending June 21 was 2,579,000, an increase of 11,000 from the previous week's revised level. The previous week's level was revised down by 3,000 from 2,571,000 to 2,568,000. The 4-week moving average was 2,580,250, a decrease of 6,000 from the previous week's revised average. This is the lowest level for this average since October 27, 2007 when it was 2,561,750. The previous week's average was revised down by 750 from 2,587,000 to 2,586,250.



UNADJUSTED DATA

The advance number of actual initial claims under state programs, unadjusted, totaled 305,385 in the week ending June 28, an increase of 221 (or 0.1 percent) from the previous week. The seasonal factors had expected a decrease of 1,567 (or -0.5 percent) from the previous week. There were 335,424 initial claims in the comparable week in 2013.

The advance unadjusted insured unemployment rate was 1.8 percent during the week ending June 21, unchanged from the prior week. The advance unadjusted number for persons claiming UI benefits in state programs totaled 2,416,986, an increase of 3,208 (or 0.1 percent) from the preceding week. The seasonal factors had expected a decrease of 7,704 (or -0.3 percent) from the previous week. A year earlier the rate was 2.2 percent and the volume was 2,778,190.



The total number of people claiming benefits in all programs for the week ending June 14 was 2,469,219, an increase of 27,744 from the previous week. There were 4,551,016 persons claiming benefits in all programs in the comparable week in 2013.

No state was triggered "on" the Extended Benefits program during the week ending June 14.

Initial claims for UI benefits filed by former Federal civilian employees totaled 1,118 in the week ending June 21, an increase of 62 from the prior week. There were 1,801 initial claims filed by newly discharged veterans, an increase of 9 from the preceding week.

There were 11,762 former Federal civilian employees claiming UI benefits for the week ending June 14, an increase of 299 from the previous week. Newly discharged veterans claiming benefits totaled 23,783, an increase of 272 from the prior week.

The highest insured unemployment rates in the week ending June 14 were in Puerto Rico (3.9), Alaska (3.8), New Jersey (2.9), California (2.8), Connecticut (2.7), Pennsylvania (2.7), Nevada (2.6), Illinois (2.4), Massachusetts (2.2), and Virgin Islands (2.2).

The largest increases in initial claims for the week ending June 21 were in New Jersey (+3,235), Connecticut (+1,864), Maryland (+1,624), New York (+1,430), and Wisconsin (+1,233), while the largest decreases were in Pennsylvania (-1,593), Ohio (-1,381), Florida (-1,341), Illinois (-1,327), and South Carolina (-591).

UNEMPLOYMENT INSURANCE DATA FOR REGULAR STATE PROGRAMS

WEEK ENDING	June 28	June 21	Change	June 14	<u>Prior Year</u>¹
Initial Claims (SA)	315,000	313,000	+2,000	314,000	344,000
Initial Claims (NSA)	305,385	305,164	+221	301,337	335,424
4-Wk Moving Average (SA)	315,000	314,500	+500	312,250	344,500
WEEK ENDING	June 21	June 14	Change	June 7	<u>Prior Year</u>¹
Insured Unemployment (SA)	2,579,000	2,568,000	+11,000	2,559,000	2,959,000
Insured Unemployment (NSA)	2,416,986	2,413,778	+3,208	2,387,182	2,778,190
4-Wk Moving Average (SA)	2,580,250	2,586,250	-6,000	2,600,000	2,972,750
<u>Insured Unemployment Rate (SA)</u> ²	2.0%	2.0%	0.0	1.9%	2.3%
<u>Insured Unemployment Rate (NSA)</u> ²	1.8%	1.8%	0.0	1.8%	2.2%

INITIAL CLAIMS FILED IN FEDERAL PROGRAMS (UNADJUSTED)

WEEK ENDING	June 21	June 14	Change	<u>Prior Year</u>¹
Federal Employees (UCFE)	1,118	1,056	+62	1,294
Newly Discharged Veterans (UCX)	1,801	1,792	+9	2,250

PERSONS CLAIMING UI BENEFITS IN ALL PROGRAMS (UNADJUSTED)

WEEK ENDING	June 14	June 7	Change	<u>Prior Year</u>¹
Regular State	2,408,508	2,382,824	+25,684	2,792,262
Federal Employees	11,762	11,463	+299	17,140
Newly Discharged Veterans	23,783	23,511	+272	34,173
<u>Extended Benefits</u> ³	264	141	+123	332
<u>State Additional Benefits</u> ⁴	8,012	8,193	-181	4,640
<u>STC / Workshare</u> ⁵	16,890	15,343	+1,547	34,605
<u>TOTAL</u> ⁶	2,469,219	2,441,475	+27,744	4,551,016

FOOTNOTES

SA - Seasonally Adjusted Data, NSA - Not Seasonally Adjusted Data

1. Prior year is comparable to most recent data.
2. Most recent week used covered employment of 131,532,656 as denominator.
3. Information on the EB program can be found here: [EB Program information](#)
4. Some states maintain additional benefit programs for those claimants who exhaust regular, extended and emergency benefits. Information on states that participate, and the extent of benefits paid, can be found starting on page 4-5 of this link: [Extensions and Special Programs PDF](#)
5. Information on STC/Worksharing can be found starting on page 4-9 of the following link: [Extensions and Special Programs PDF](#)
6. Prior Year Total includes Emergency Unemployment Compensation (EUC08) claimants.

UNADJUSTED INITIAL CLAIMS FOR WEEK ENDED JUNE 21, 2014

STATES WITH A DECREASE OF MORE THAN 1,000

State	Change	State Supplied Comment
PA	-1,593	Fewer layoffs in the transportation, food service, and construction industries.
OH	-1,381	Fewer layoffs in the transportation and financial service industries.
FL	-1,341	Fewer layoffs in the agriculture, manufacturing, retail trade, and service industries.
IL	-1,327	No comment.

STATES WITH AN INCREASE OF MORE THAN 1,000

State	Change	State Supplied Comment
NJ	+3,235	Layoffs in the educational service, accommodation and food service, transportation and warehousing, and public administration industries.
CT	+1,864	No comment.
MD	+1,624	No comment.
NY	+1,430	Layoffs in the construction, food services, and arts, entertainment and recreation industries.
WI	+1,233	No comment.
OR	+1,167	No comment.

Seasonally Adjusted US Weekly UI Claims (in thousands)

Week Ending	Change from			Insured Unemployment	Change from		IUR
	Initial Claims	Prior Week	4-Week Average		Prior Week	4-Week Average	
June 22, 2013	345	-7	345.25	2959	-18	2972.75	2.3
June 29, 2013	344	-1	344.50	3003	44	2978.50	2.3
July 6, 2013	353	9	348.50	3079	76	3004.50	2.4
July 13, 2013	339	-14	345.25	2991	-88	3008.00	2.3
July 20, 2013	343	4	344.75	2950	-41	3005.75	2.3
July 27, 2013	333	-10	342.00	3001	51	3005.25	2.3
August 3, 2013	335	2	337.50	2963	-38	2976.25	2.3
August 10, 2013	329	-6	335.00	2981	18	2973.75	2.3
August 17, 2013	338	9	333.75	2981	0	2981.50	2.3
August 24, 2013	336	-2	334.50	2928	-53	2963.25	2.3
August 31, 2013	328	-8	332.75	2845	-83	2933.75	2.2
September 7, 2013	307	-21	327.25	2812	-33	2891.50	2.2
September 14, 2013	318	11	322.25	2847	35	2858.00	2.2
September 21, 2013	316	-2	317.25	2916	69	2855.00	2.2
September 28, 2013	318	2	314.75	2910	-6	2871.25	2.2
October 5, 2013	362	44	328.50	2888	-22	2890.25	2.2
October 12, 2013	355	-7	337.75	2881	-7	2898.75	2.2
October 19, 2013	347	-8	345.50	2896	15	2893.75	2.2
October 26, 2013	346	-1	352.50	2890	-6	2888.75	2.2
November 2, 2013	341	-5	347.25	2843	-47	2877.50	2.2
November 9, 2013	342	1	344.00	2889	46	2879.50	2.2
November 16, 2013	332	-10	340.25	2813	-76	2858.75	2.2
November 23, 2013	324	-8	334.75	2804	-9	2837.25	2.2
November 30, 2013	317	-7	328.75	2837	33	2835.75	2.2
December 7, 2013	358	41	332.75	2887	50	2835.25	2.2
December 14, 2013	368	10	341.75	2925	38	2863.25	2.2
December 21, 2013	339	-29	345.50	2840	-85	2872.25	2.2
December 28, 2013	344	5	352.25	2863	23	2878.75	2.2
January 4, 2014	333	-11	346.00	2945	82	2893.25	2.2
January 11, 2014	329	-4	336.25	2951	6	2899.75	2.3
January 18, 2014	334	5	335.00	2903	-48	2915.50	2.2
January 25, 2014	345	11	335.25	2915	12	2928.50	2.2
February 1, 2014	328	-17	334.00	2918	3	2921.75	2.2
February 8, 2014	343	15	337.50	2936	18	2918.00	2.2
February 15, 2014	330	-13	336.50	2941	5	2927.50	2.2
February 22, 2014	351	21	338.00	2890	-51	2921.25	2.2
March 1, 2014	325	-26	337.25	2850	-40	2904.25	2.2
March 8, 2014	319	-6	331.25	2869	19	2887.50	2.2
March 15, 2014	323	4	329.50	2814	-55	2855.75	2.1
March 22, 2014	310	-13	319.25	2838	24	2842.75	2.2
March 29, 2014	332	22	321.00	2750	-88	2817.75	2.1
April 5, 2014	301	-31	316.50	2741	-9	2785.75	2.1
April 12, 2014	305	4	312.00	2674	-67	2750.75	2.0
April 19, 2014	330	25	317.00	2761	87	2731.50	2.1
April 26, 2014	345	15	320.25	2676	-85	2713.00	2.0
May 3, 2014	321	-24	325.25	2666	-10	2694.25	2.0
May 10, 2014	298	-23	323.50	2648	-18	2687.75	2.0
May 17, 2014	327	29	322.75	2623	-25	2653.25	2.0
May 24, 2014	304	-23	312.50	2603	-20	2635.00	2.0
May 31, 2014	313	9	310.50	2615	12	2622.25	2.0
June 7, 2014	318	5	315.50	2559	-56	2600.00	1.9
June 14, 2014	314	-4	312.25	2568	9	2586.25	2.0
June 21, 2014	313	-1	314.50	2579	11	2580.25	2.0
June 28, 2014	315	2	315.00				

Initial Claims Filed During Week Ended June 21 INITIAL CLAIMS								Insured Unemployment For Week Ended June 14 INSURED UNEMPLOYMENT					
STATE	STATE	CHANGE FROM				STATE	STATE	CHANGE FROM				ALL PROGRAMS EXCLUDING RAILROAD RETIREMENT	
		LAST WEEK	YEAR AGO	UCFE ¹	UCX ¹			LAST WEEK	YEAR AGO	UCFE ¹	UCX ¹		
						(%) ²							
Alabama	3854	-580	-290	15	25	29757	1.7	66	-3790	135	254	30146	
Alaska	1098	-51	-371	4	2	11874	3.8	214	-1026	131	115	12120	
Arizona	4960	-295	-440	38	4	42784	1.8	210	-1034	307	291	43382	
Arkansas	2783	-442	83	13	9	23909	2.1	647	-4979	98	197	24204	
California	62327	555	-3731	214	300	414824	2.8	-1677	-28596	1890	4384	421104	
Colorado	2231	-254	-332	11	62	34378	1.5	1220	-4480	173	907	35458	
Connecticut	5049	1864	717	10	13	44356	2.7	29	-4720	64	191	44611	
Delaware	1109	-270	-34	6	3	7611	1.9	790	-946	21	44	7677	
District of Columbia	527	183	4	12	0	9751	1.9	-99	-984	338	19	10108	
Florida	13904	-1341	-1445	42	122	92566	1.3	4176	-20413	472	770	93808	
Georgia	8276	-101	-1280	32	63	49668	1.3	303	-13719	322	836	50826	
Hawaii	1780	121	28	8	17	10698	1.8	211	-1111	96	236	11030	
Idaho	1146	-82	-100	3	7	8730	1.4	-183	-1647	36	63	8829	
Illinois	11978	-1327	-284	18	32	136408	2.4	8383	-10147	498	764	137670	
Indiana	4043	146	-1140	14	30	29299	1.0	-446	-13047	207	239	29745	
Iowa	2083	-112	-350	5	5	18015	1.2	120	-3332	60	116	18191	
Kansas	1872	-412	-798	8	10	18854	1.4	-22	-3720	199	244	19297	
Kentucky	3670	198	20	34	17	26444	1.5	609	-6558	287	541	27272	
Louisiana	2604	-87	-422	5	13	21837	1.2	261	-2716	76	113	22026	
Maine	979	34	-345	0	0	8719	1.5	-220	-1463	23	53	8795	
Maryland	6220	1624	-718	32	28	49066	2.1	11	-3291	467	384	49917	
Massachusetts	6394	342	38	23	29	70434	2.2	-1970	-8109	179	389	71002	
Michigan	7731	569	-2088	15	37	66069	1.7	336	-8466	154	493	66716	
Minnesota	3584	-346	-395	5	9	37022	1.4	-552	-5515	80	218	37320	
Mississippi	2143	-490	-337	9	11	22752	2.1	590	-3533	137	118	23007	
Missouri	5247	-437	-231	46	24	39740	1.5	-431	-7028	264	229	40233	
Montana	1059	78	129	2	8	6768	1.6	349	-2731	84	80	6932	
Nebraska	975	-135	-202	6	4	7723	0.8	-87	-1812	27	37	7787	
Nevada	3275	-278	-58	16	18	29157	2.6	460	-1743	108	249	29514	
New Hampshire	855	146	-265	0	4	6307	1.0	-117	-1288	10	20	6337	
New Jersey	12045	3235	-1754	19	43	107407	2.9	1983	-6794	251	530	108442	
New Mexico	1121	-90	-149	5	9	15771	2.1	-308	-1444	100	148	16019	
New York	17631	1430	-3837	43	68	169653	2.0	-1293	-40910	655	1129	171437	
North Carolina	5785	297	-4183	17	62	51160	1.3	-258	-37696	191	701	52052	
North Dakota	298	8	-37	11	6	1742	0.4	70	-612	133	8	1883	
Ohio	7533	-1381	-1430	14	59	68011	1.4	114	-12621	155	626	68792	
Oklahoma	1490	-134	-419	8	25	16899	1.1	275	-3731	57	172	17128	
Oregon	5863	1167	-1330	22	30	34505	2.1	172	-8101	254	317	35076	
Pennsylvania	24283	-1593	69	94	77	145960	2.7	1545	-22035	732	919	147611	
Puerto Rico	2742	-321	-496	6	11	35291	3.9	2651	-10131	115	263	35669	
Rhode Island	1683	519	378	4	4	9435	2.1	52	-788	57	60	9552	
South Carolina	3827	-591	-556	8	42	19356	1.1	512	-11014	63	182	19601	
South Dakota	211	-29	-20	14	2	1526	0.4	17	-272	226	5	1757	
Tennessee	4501	-90	46	13	22	33990	1.3	997	-10106	127	275	34392	
Texas	16722	228	-1275	85	238	155551	1.4	6580	-12829	732	3265	159551	
Utah	1350	-49	-236	60	11	11618	1.0	-80	-2123	159	98	11875	
Vermont	795	358	-297	1	0	4172	1.4	-51	-945	11	18	4201	
Virgin Islands	42	6	-9	0	0	824	2.2	58	-250	0	24	848	
Virginia	4514	151	-424	11	32	35656	1.0	-327	-7512	300	863	36819	
Washington	7531	640	-843	24	129	51349	1.8	-1240	-8200	255	1275	52879	
West Virginia	1111	-56	-48	3	4	14505	2.1	1180	-1387	93	93	14691	
Wisconsin	9938	1233	-243	7	20	50701	1.9	677	-14968	128	188	51017	
Wyoming	257	-66	-142	1	0	3176	1.2	89	-1317	25	30	3231	
Totals	305029	3692	-31872	1116	1800	2413778	1.8	26596	-387730	11762	23783	2449587	

Figures Appearing In columns showing Over-The-Week Changes reflect all revisions in data for prior week submitted by State agencies.

1. The Unemployment Compensation program for Federal Employees (UCFE) and the Unemployment Compensation for Ex-servicemembers (UCX) exclude claims filed jointly under other programs to avoid duplication.
2. Rate is not seasonally adjusted. The source of US total covered employment is BLS.

TECHNICAL NOTES

This news release presents the weekly unemployment insurance (UI) claims reported by each state's unemployment insurance program offices. These claims may be used for monitoring workload volume, assessing state program operations and for assessing labor market conditions. States initially report claims directly taken by the state liable for the benefit payments, regardless of where the claimant who filed the claim resided. These are the basis for the advance initial claims and continued claims reported each week. These data come from ETA 538, Advance Weekly Initial and Continued Claims Report. The following week initial claims and continued claims are revised based on a second reporting by states that reflect the claimants by state of residence. These data come from the ETA 539, Weekly Claims and Extended Benefits Trigger Data Report.

A. Initial Claims

An initial claim is a claim filed by an unemployed individual after a separation from an employer. The claimant requests a determination of basic eligibility for the UI program. When an initial claim is filed with a state, certain programmatic activities take place and these result in activity counts including the count of initial claims.

The count of U.S. initial claims for unemployment insurance is a leading economic indicator because it is an indication of emerging labor market conditions in the country. However, these are weekly administrative data which are difficult to seasonally adjust, making the series subject to some volatility.

B. Continued Weeks Claimed

A person who has already filed an initial claim and who has experienced a week of unemployment then files a continued claim to claim benefits for that week of unemployment. Continued claims are also referred to as insured unemployment.

The count of U.S. continued weeks claimed is also a good indicator of labor market conditions. Continued claims reflect the current number of insured unemployed workers filing for UI benefits in the nation. While continued claims are not a leading indicator (they roughly coincide with economic cycles at their peaks and lag at cycle troughs), they provide confirming evidence of the direction of the U.S. economy.

C. Seasonal Adjustments and Annual Revisions

Over the course of a year, the weekly changes in the levels of initial claims and continued claims undergo regularly occurring fluctuations. These fluctuations may result from seasonal changes in weather, major holidays, the opening and closing of schools, or other similar events. Because these seasonal events follow a more or less regular pattern each year, their influence on the level of a series can be tempered by adjusting for regular seasonal variation. These adjustments make trend and cycle developments easier to spot.

At the beginning of each calendar year, the Bureau of Labor Statistics provides the Employment and Training Administration (ETA) with a set of seasonal factors to apply to the unadjusted data during that year.

Concurrent with the implementation and release of the new seasonal factors, ETA incorporates revisions to the UI claims historical series caused by updates to the unadjusted data.

[Weekly Claims Archives](#)
[Weekly Claims Data](#)

U.S. Department of Labor news materials are accessible at <http://www.dol.gov>. The Department's [Reasonable Accommodation Resource Center](#) converts Departmental information and documents into alternative formats, which include Braille and large print. For alternative format requests, please contact the Department at (202) 693-7828 (voice) or (800) 877-8339 (federal relay).