



News Release

Connect with DOL at <http://social.dol.gov!>



U.S. Department of Labor
Employment and Training Administration
Washington, D.C.
Release Number: USDL 14-1134-NAT

Program Contacts
Tom Stengle (202) 693-2991
Tony Sznoluch (202) 693-3176
Media Contact (202) 693-4676

TRANSMISSION OF MATERIALS IN THIS RELEASE IS EMBARGOED UNTIL
8:30 A.M. (Eastern) Thursday, June 19 2014

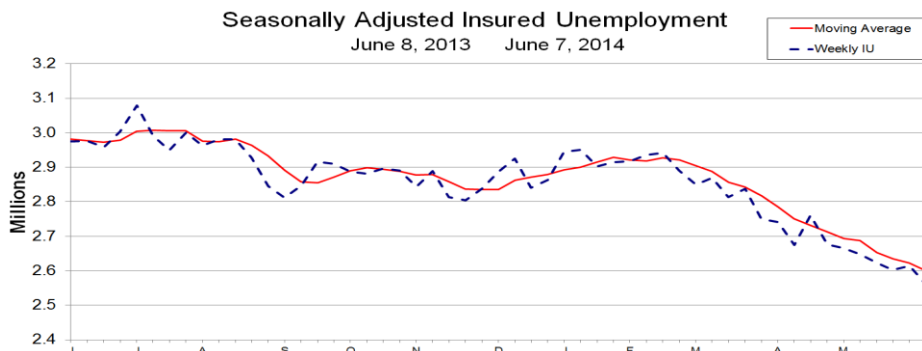
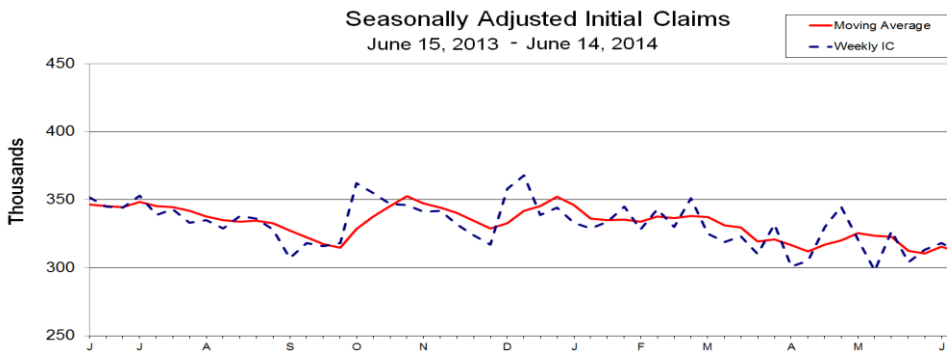
UNEMPLOYMENT INSURANCE WEEKLY CLAIMS

SEASONALLY ADJUSTED DATA

In the week ending June 14, the advance figure for seasonally adjusted **initial claims** was 312,000, a decrease of 6,000 from the previous week's revised level. The previous week's level was revised up by 1,000 from 317,000 to 318,000. The 4-week moving average was 311,750, a decrease of 3,750 from the previous week's revised average. The previous week's average was revised up by 250 from 315,250 to 315,500.

There were no special factors impacting this week's initial claims.

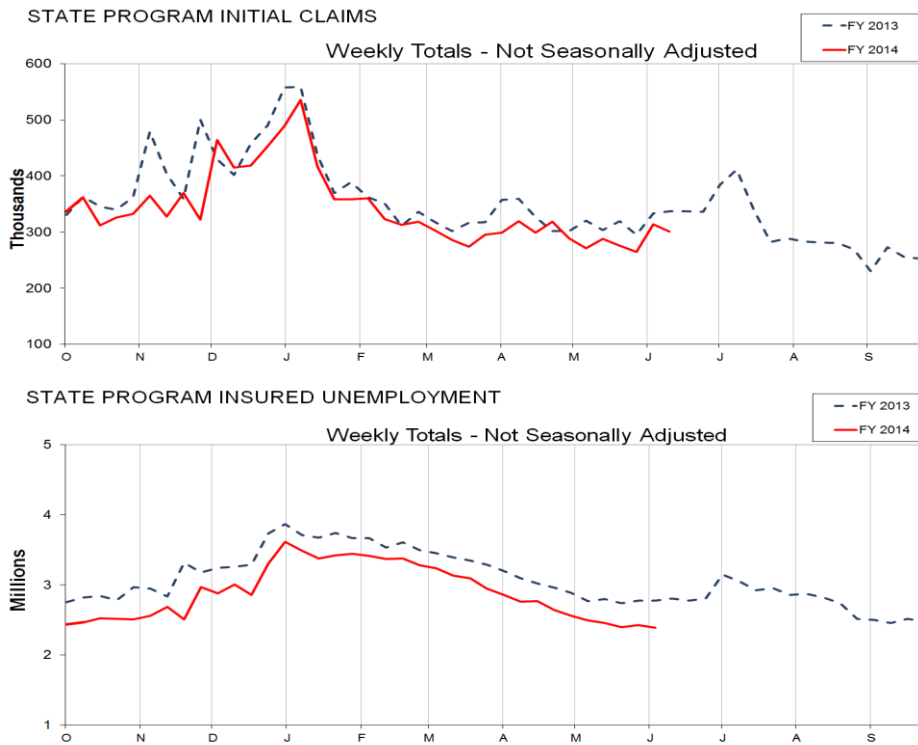
The advance seasonally adjusted **insured unemployment rate** was 1.9 percent for the week ending June 7, a decrease of 0.1 percentage point from the previous week's unrevised rate. The advance number for seasonally adjusted **insured unemployment** during the week ending June 7 was 2,561,000, a decrease of 54,000 from the previous week's revised level. This is the lowest level for insured unemployment since October 13, 2007 when it was 2,541,000. The previous week's level was revised up 1,000 from 2,614,000 to 2,615,000. The 4-week moving average was 2,600,500, a decrease of 21,750 from the previous week's revised average. This is the lowest level for this average since November 3, 2007 when it was 2,585,750. The previous week's average was revised up by 250 from 2,622,000 to 2,622,250.



UNADJUSTED DATA

The advance number of actual initial claims under state programs, unadjusted, totaled 300,193 in the week ending June 14, a decrease of 13,178 (or -4.2 percent) from the previous week. The seasonal factors had expected a decrease of 7,946 (or -2.5 percent) from the previous week. There were 336,970 initial claims in the comparable week in 2013.

The advance unadjusted insured unemployment rate was 1.8 percent during the week ending June 7, unchanged from the prior week. The advance unadjusted number for persons claiming UI benefits in state programs totaled 2,389,634, a decrease of 34,500 (or -1.4 percent) from the preceding week. The seasonal factors had expected an increase of 15,690 (or 0.6 percent) from the previous week. A year earlier the rate was 2.1 percent and the volume was 2,772,541.



The total number of people claiming benefits in all programs for the week ending May 31 was 2,479,463, an increase of 32,125 from the previous week. There were 4,526,072 persons claiming benefits in all programs in the comparable week in 2013.

No state was triggered "on" the Extended Benefits program during the week ending May 31.

Initial claims for UI benefits filed by former Federal civilian employees totaled 1,255 in the week ending June 7, a decrease of 93 from the prior week. There were 1,972 initial claims filed by newly discharged veterans, an increase of 437 from the preceding week.

There were 12,105 former Federal civilian employees claiming UI benefits for the week ending May 31, an increase of 734 from the previous week. Newly discharged veterans claiming benefits totaled 24,080, an increase of 361 from the prior week.

The highest insured unemployment rates in the week ending May 31 were in Alaska (4.1), Puerto Rico (3.3), New Jersey (2.9), California (2.8), Connecticut (2.8), Pennsylvania (2.7), Nevada (2.6), Illinois (2.4), Massachusetts (2.2), West Virginia (2.2), Maryland (2.1), and New Mexico (2.1).

The largest increases in initial claims for the week ending June 7 were in California (+9,935), Florida (+4,050), Illinois (+3,248), Georgia (+2,997), and Pennsylvania (+2,909), while the largest decreases were in New Mexico (-332), Nebraska (-162), Alaska (-109), Kansas (-49), and North Dakota (-30).

UNEMPLOYMENT INSURANCE DATA FOR REGULAR STATE PROGRAMS

WEEK ENDING	June 14	June 7	Change	May 31	<u>Prior Year</u>¹
Initial Claims (SA)	312,000	318,000	-6,000	313,000	352,000
Initial Claims (NSA)	300,193	313,371	-13,178	264,133	336,970
4-Wk Moving Average (SA)	311,750	315,500	-3,750	310,500	346,500
WEEK ENDING	June 7	May 31	Change	May 24	<u>Prior Year</u>¹
Insured Unemployment (SA)	2,561,000	2,615,000	-54,000	2,603,000	2,975,000
Insured Unemployment (NSA)	2,389,634	2,424,134	-34,500	2,394,378	2,772,541
4-Wk Moving Average (SA)	2,600,500	2,622,250	-21,750	2,635,000	2,982,000
<u>Insured Unemployment Rate (SA)</u> ²	1.9%	2.0%	-0.1	2.0%	2.3%
<u>Insured Unemployment Rate (NSA)</u> ²	1.8%	1.8%	0.0	1.8%	2.1%

INITIAL CLAIMS FILED IN FEDERAL PROGRAMS (UNADJUSTED)

WEEK ENDING	June 7	May 31	Change	<u>Prior Year</u>¹
Federal Employees (UCFE)	1,255	1,348	-93	1,416
Newly Discharged Veterans (UCX)	1,972	1,535	+437	2,392

PERSONS CLAIMING UI BENEFITS IN ALL PROGRAMS (UNADJUSTED)

WEEK ENDING	May 31	May 24	Change	<u>Prior Year</u>¹
Regular State	2,420,183	2,390,008	+30,175	2,765,307
Federal Employees	12,105	11,371	+734	16,994
Newly Discharged Veterans	24,080	23,719	+361	33,990
<u>Extended Benefits</u> ³	181	132	+49	329
<u>State Additional Benefits</u> ⁴	8,660	8,292	+368	4,761
<u>STC / Workshare</u> ⁵	14,254	13,816	+438	20,729
<u>TOTAL</u> ⁶	2,479,463	2,447,338	+32,125	4,526,072

FOOTNOTES

SA - Seasonally Adjusted Data, NSA - Not Seasonally Adjusted Data

1. Prior year is comparable to most recent data.
2. Most recent week used covered employment of 131,532,656 as denominator.
3. Information on the EB program can be found here: [EB Program information](#)
4. Some states maintain additional benefit programs for those claimants who exhaust regular, extended and emergency benefits. Information on states that participate, and the extent of benefits paid, can be found starting on page 4-5 of this link: [Extensions and Special Programs PDF](#)
5. Information on STC/Worksharing can be found starting on page 4-9 of the following link: [Extensions and Special Programs PDF](#)
6. Prior Year Total includes Emergency Unemployment Compensation (EUC08) claimants.

UNADJUSTED INITIAL CLAIMS FOR WEEK ENDED JUNE 7, 2014

STATES WITH A DECREASE OF MORE THAN 1,000

State	Change	State Supplied Comment
None		

STATES WITH AN INCREASE OF MORE THAN 1,000

State	Change	State Supplied Comment
CA	+9,935	Layoffs in the service industry.
FL	+4,050	Layoffs in the agriculture, construction, manufacturing, wholesale trade, retail trade, and service industries.
IL	+3,248	Layoffs in the transportation, construction, and trade industries.
GA	+2,997	Layoffs in the manufacturing, administrative and support services, construction, and health care and social assistance industries.
PA	+2,909	Layoffs in the transportation, food services, social assistance, and educational services industries.
NJ	+2,757	Layoffs in the trade, manufacturing, transportation and warehousing, and health care and social assistance industries.
TX	+2,100	Layoffs in the manufacturing, support services, retail trade, transportation, educational services, and finance industries.
OR	+1,501	No comment.
MO	+1,469	Layoffs in the manufacturing, accommodation and food services, and health care industries.
SC	+1,146	Layoffs in the manufacturing industry.
PR	+1,125	No comment.
MA	+1,112	Layoffs in the manufacturing, wholesale trade, professional services, administrative and waste services, and health care industries.
NC	+1,041	Layoffs in the business services and food services industries.

Seasonally Adjusted US Weekly UI Claims (in thousands)

Week Ending	Change from			Insured Unemployment	Change from		IUR
	Initial Claims	Prior Week	4-Week Average		Prior Week	4-Week Average	
June 8, 2013	337	-10	344.50	2975	-5	2982.00	2.3
June 15, 2013	352	15	346.50	2977	2	2977.75	2.3
June 22, 2013	345	-7	345.25	2959	-18	2972.75	2.3
June 29, 2013	344	-1	344.50	3003	44	2978.50	2.3
July 6, 2013	353	9	348.50	3079	76	3004.50	2.4
July 13, 2013	339	-14	345.25	2991	-88	3008.00	2.3
July 20, 2013	343	4	344.75	2950	-41	3005.75	2.3
July 27, 2013	333	-10	342.00	3001	51	3005.25	2.3
August 3, 2013	335	2	337.50	2963	-38	2976.25	2.3
August 10, 2013	329	-6	335.00	2981	18	2973.75	2.3
August 17, 2013	338	9	333.75	2981	0	2981.50	2.3
August 24, 2013	336	-2	334.50	2928	-53	2963.25	2.3
August 31, 2013	328	-8	332.75	2845	-83	2933.75	2.2
September 7, 2013	307	-21	327.25	2812	-33	2891.50	2.2
September 14, 2013	318	11	322.25	2847	35	2858.00	2.2
September 21, 2013	316	-2	317.25	2916	69	2855.00	2.2
September 28, 2013	318	2	314.75	2910	-6	2871.25	2.2
October 5, 2013	362	44	328.50	2888	-22	2890.25	2.2
October 12, 2013	355	-7	337.75	2881	-7	2898.75	2.2
October 19, 2013	347	-8	345.50	2896	15	2893.75	2.2
October 26, 2013	346	-1	352.50	2890	-6	2888.75	2.2
November 2, 2013	341	-5	347.25	2843	-47	2877.50	2.2
November 9, 2013	342	1	344.00	2889	46	2879.50	2.2
November 16, 2013	332	-10	340.25	2813	-76	2858.75	2.2
November 23, 2013	324	-8	334.75	2804	-9	2837.25	2.2
November 30, 2013	317	-7	328.75	2837	33	2835.75	2.2
December 7, 2013	358	41	332.75	2887	50	2835.25	2.2
December 14, 2013	368	10	341.75	2925	38	2863.25	2.2
December 21, 2013	339	-29	345.50	2840	-85	2872.25	2.2
December 28, 2013	344	5	352.25	2863	23	2878.75	2.2
January 4, 2014	333	-11	346.00	2945	82	2893.25	2.2
January 11, 2014	329	-4	336.25	2951	6	2899.75	2.3
January 18, 2014	334	5	335.00	2903	-48	2915.50	2.2
January 25, 2014	345	11	335.25	2915	12	2928.50	2.2
February 1, 2014	328	-17	334.00	2918	3	2921.75	2.2
February 8, 2014	343	15	337.50	2936	18	2918.00	2.2
February 15, 2014	330	-13	336.50	2941	5	2927.50	2.2
February 22, 2014	351	21	338.00	2890	-51	2921.25	2.2
March 1, 2014	325	-26	337.25	2850	-40	2904.25	2.2
March 8, 2014	319	-6	331.25	2869	19	2887.50	2.2
March 15, 2014	323	4	329.50	2814	-55	2855.75	2.1
March 22, 2014	310	-13	319.25	2838	24	2842.75	2.2
March 29, 2014	332	22	321.00	2750	-88	2817.75	2.1
April 5, 2014	301	-31	316.50	2741	-9	2785.75	2.1
April 12, 2014	305	4	312.00	2674	-67	2750.75	2.0
April 19, 2014	330	25	317.00	2761	87	2731.50	2.1
April 26, 2014	345	15	320.25	2676	-85	2713.00	2.0
May 3, 2014	321	-24	325.25	2666	-10	2694.25	2.0
May 10, 2014	298	-23	323.50	2648	-18	2687.75	2.0
May 17, 2014	327	29	322.75	2623	-25	2653.25	2.0
May 24, 2014	304	-23	312.50	2603	-20	2635.00	2.0
May 31, 2014	313	9	310.50	2615	12	2622.25	2.0
June 7, 2014	318	5	315.50	2561	-54	2600.50	1.9
June 14, 2014	312	-6	311.75				

Initial Claims Filed During Week Ended June 7 INITIAL CLAIMS								Insured Unemployment For Week Ended May 31 INSURED UNEMPLOYMENT					
STATE	STATE	CHANGE FROM				STATE	%	CHANGE FROM				ALL PROGRAMS EXCLUDING RAILROAD RETIREMENT	
		LAST WEEK	YEAR AGO	UCFE ¹	UCX ¹			LAST WEEK	YEAR AGO	UCFE ¹	UCX ¹		
Alabama	4713	472	15	17	31	28315	1.6	1148	-4896	127	263	28705	
Alaska	1287	-109	-593	5	8	12917	4.1	570	-1103	126	101	13144	
Arizona	6100	631	109	64	8	42203	1.7	1916	-625	262	288	42753	
Arkansas	3513	695	-272	10	12	23069	2.0	1157	-5453	101	197	23367	
California	61102	9935	16566	258	264	425034	2.8	22875	4220	2054	4493	431581	
Colorado	2946	440	-452	7	72	33505	1.5	-3139	-6087	175	868	34548	
Connecticut	3195	526	-345	9	10	44817	2.8	201	-4099	66	214	45097	
Delaware	941	333	-1	2	5	6798	1.7	-1224	-867	33	45	6877	
District of Columbia	379	15	-552	5	5	9998	1.9	212	-437	337	18	10353	
Florida	15571	4050	2950	41	131	88991	1.2	-2206	-19135	503	783	90277	
Georgia	10622	2997	-1329	39	93	48118	1.3	2353	-14256	324	871	49313	
Hawaii	2090	503	-109	8	25	9964	1.7	81	-1836	92	267	10323	
Idaho	1498	527	-190	1	6	9135	1.5	84	-1878	40	78	9253	
Illinois	13600	3248	-3361	17	59	135497	2.4	3851	-7570	521	721	136739	
Indiana	4267	703	-1041	14	25	30635	1.1	-692	-12692	239	278	31152	
Iowa	2592	457	-692	6	7	17633	1.2	431	-4335	69	116	17818	
Kansas	2646	-49	-296	9	11	19077	1.5	-1062	-3995	206	261	19544	
Kentucky	3605	276	-1351	26	16	26248	1.5	621	-5708	290	559	27097	
Louisiana	3292	316	-463	5	13	20745	1.1	1169	-2884	77	117	20939	
Maine	969	67	-151	2	2	9659	1.7	-408	-1515	29	52	9740	
Maryland	4511	601	-950	35	34	48969	2.1	225	-4327	525	395	49889	
Massachusetts	6415	1112	222	15	32	71882	2.2	-2430	-7535	194	428	72504	
Michigan	7312	730	-2120	10	33	68435	1.7	-14298	-6553	163	459	69057	
Minnesota	4522	959	-666	9	18	39344	1.5	677	-7004	96	233	39673	
Mississippi	3491	472	225	6	9	21190	2.0	1418	-4669	165	126	21481	
Missouri	7814	1469	370	54	26	38161	1.5	332	-9391	262	213	38636	
Montana	1040	174	-421	5	9	7045	1.7	126	-2734	82	70	7197	
Nebraska	1311	-162	-144	9	5	7763	0.9	565	-2074	32	37	7832	
Nevada	3479	483	-138	12	20	29085	2.6	72	-1908	105	230	29420	
New Hampshire	762	65	-109	2	2	6587	1.1	-99	-1090	8	21	6616	
New Jersey	8964	2757	-14	21	40	108993	2.9	3200	-6023	272	514	109954	
New Mexico	1616	-332	-25	12	8	15822	2.1	215	-912	70	145	16037	
New York	18279	630	-3397	63	86	174252	2.0	1214	-36447	692	1167	176111	
North Carolina	5663	1041	-5968	13	62	52378	1.3	-689	-38589	170	720	53268	
North Dakota	293	-30	-209	18	2	1736	0.4	91	-1001	137	8	1881	
Ohio	9170	943	-2118	17	53	67382	1.3	583	-11536	164	636	68182	
Oklahoma	1831	243	-383	4	15	16643	1.1	533	-4011	66	174	16883	
Oregon	5482	1501	-1123	23	32	35257	2.1	-273	-9703	314	325	35896	
Pennsylvania	18756	2909	-4814	99	78	148189	2.7	-89	-14629	733	959	149881	
Puerto Rico	4449	1125	47	14	7	29818	3.3	1657	-9697	76	283	30177	
Rhode Island	1117	329	15	1	5	9518	2.1	-128	-846	42	61	9621	
South Carolina	4245	1146	-645	18	31	18362	1.0	410	-11424	67	180	18609	
South Dakota	292	14	-34	29	1	1493	0.4	142	-372	210	6	1709	
Tennessee	6085	588	-578	11	31	31807	1.2	1852	-11498	127	264	32198	
Texas	17835	2100	-384	113	296	151074	1.4	1919	-11661	662	3189	154930	
Utah	1549	277	-260	30	13	11784	1.0	-32	-2297	143	100	12027	
Vermont	403	3	-245	2	4	4617	1.6	-147	-802	13	19	4649	
Virgin Islands	35	6	-32	0	0	804	2.1	20	-202	2	10	816	
Virginia	4710	742	-1131	22	55	35843	1.0	508	-6818	313	900	37056	
Washington	7038	108	-882	27	138	57851	2.0	1697	-9237	274	1292	59417	
West Virginia	1423	340	-127	5	7	14915	2.2	1821	-843	78	110	15103	
Wisconsin	8163	799	-1936	9	15	51441	1.9	693	-14491	142	181	51764	
Wyoming	388	63	-61	2	2	3336	1.2	33	-1534	35	35	3406	
Totals	313371	49238	-19593	1255	1972	2424134	1.8	29756	-347009	12105	24080	2460500	

Figures Appearing In columns showing Over-The-Week Changes reflect all revisions in data for prior week submitted by State agencies.

1. The Unemployment Compensation program for Federal Employees (UCFE) and the Unemployment Compensation for Ex-servicemembers (UCX) exclude claims filed jointly under other programs to avoid duplication.
2. Rate is not seasonally adjusted. The source of US total covered employment is BLS.

TECHNICAL NOTES

This news release presents the weekly unemployment insurance (UI) claims reported by each state's unemployment insurance program offices. These claims may be used for monitoring workload volume, assessing state program operations and for assessing labor market conditions. States initially report claims directly taken by the state liable for the benefit payments, regardless of where the claimant who filed the claim resided. These are the basis for the advance initial claims and continued claims reported each week. These data come from ETA 538, Advance Weekly Initial and Continued Claims Report. The following week initial claims and continued claims are revised based on a second reporting by states that reflect the claimants by state of residence. These data come from the ETA 539, Weekly Claims and Extended Benefits Trigger Data Report.

A. Initial Claims

An initial claim is a claim filed by an unemployed individual after a separation from an employer. The claimant requests a determination of basic eligibility for the UI program. When an initial claim is filed with a state, certain programmatic activities take place and these result in activity counts including the count of initial claims.

The count of U.S. initial claims for unemployment insurance is a leading economic indicator because it is an indication of emerging labor market conditions in the country. However, these are weekly administrative data which are difficult to seasonally adjust, making the series subject to some volatility.

B. Continued Weeks Claimed

A person who has already filed an initial claim and who has experienced a week of unemployment then files a continued claim to claim benefits for that week of unemployment. Continued claims are also referred to as insured unemployment.

The count of U.S. continued weeks claimed is also a good indicator of labor market conditions. Continued claims reflect the current number of insured unemployed workers filing for UI benefits in the nation. While continued claims are not a leading indicator (they roughly coincide with economic cycles at their peaks and lag at cycle troughs), they provide confirming evidence of the direction of the U.S. economy.

C. Seasonal Adjustments and Annual Revisions

Over the course of a year, the weekly changes in the levels of initial claims and continued claims undergo regularly occurring fluctuations. These fluctuations may result from seasonal changes in weather, major holidays, the opening and closing of schools, or other similar events. Because these seasonal events follow a more or less regular pattern each year, their influence on the level of a series can be tempered by adjusting for regular seasonal variation. These adjustments make trend and cycle developments easier to spot.

At the beginning of each calendar year, the Bureau of Labor Statistics provides the Employment and Training Administration (ETA) with a set of seasonal factors to apply to the unadjusted data during that year.

Concurrent with the implementation and release of the new seasonal factors, ETA incorporates revisions to the UI claims historical series caused by updates to the unadjusted data.

[Weekly Claims Archives](#)
[Weekly Claims Data](#)

U.S. Department of Labor news materials are accessible at <http://www.dol.gov>. The Department's [Reasonable Accommodation Resource Center](#) converts Departmental information and documents into alternative formats, which include Braille and large print. For alternative format requests, please contact the Department at (202) 693-7828 (voice) or (800) 877-8339 (federal relay).