



# News Release

Connect with DOL at  
<http://social.dol.gov!>



U.S. Department of Labor  
Employment and Training Administration  
Washington, D.C.  
Release Number: USDL 14-1089-NAT

Program Contacts  
Tom Stengle (202) 693-2991  
Tony Sznoluch (202) 693-3176  
Media Contact (202) 693-4676

TRANSMISSION OF MATERIALS IN THIS RELEASE IS EMBARGOED UNTIL  
**8:30 A.M. (Eastern) Thursday, June 12 2014**

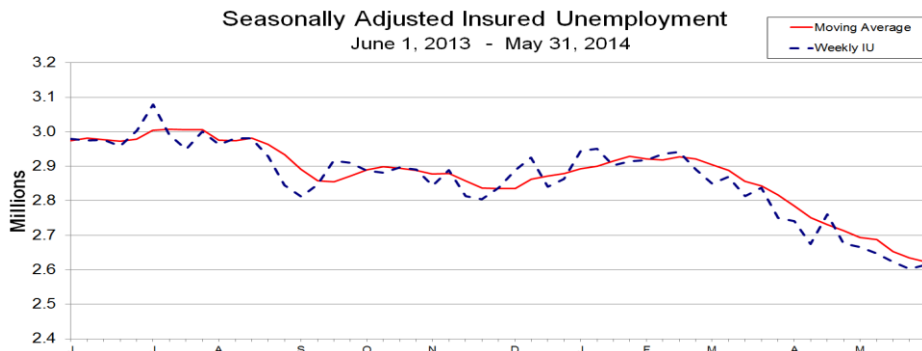
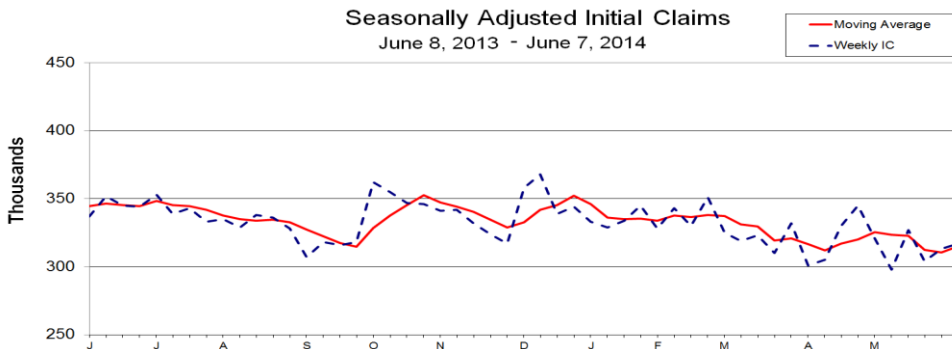
## UNEMPLOYMENT INSURANCE WEEKLY CLAIMS

### SEASONALLY ADJUSTED DATA

In the week ending June 7, the advance figure for seasonally adjusted **initial claims** was 317,000, an increase of 4,000 from the previous week's revised level. The previous week's level was revised up by 1,000 from 312,000 to 313,000. The 4-week moving average was 315,250, an increase of 4,750 from the previous week's revised average. The previous week's average was revised up by 250 from 310,250 to 310,500.

There were no special factors impacting this week's initial claims.

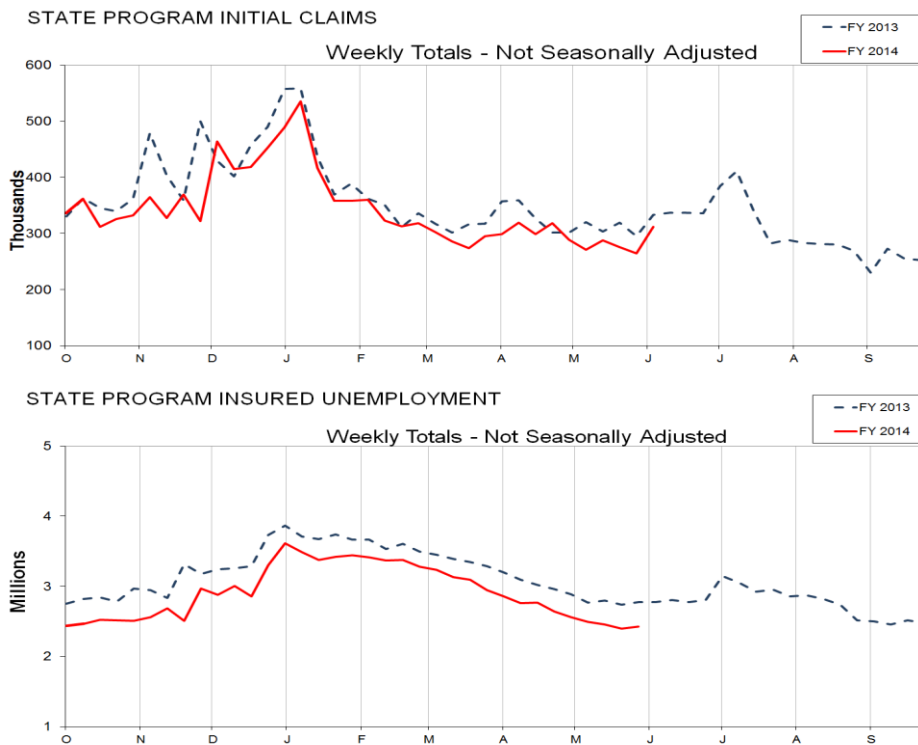
The advance seasonally adjusted **insured unemployment rate** was 2.0 percent for the week ending May 31, unchanged from the previous week's unrevised rate. The advance number for seasonally adjusted **insured unemployment** during the week ending May 31 was 2,614,000, an increase of 11,000 from the previous week's unrevised level of 2,603,000. The 4-week moving average was 2,622,000, a decrease of 13,000 from the previous week's unrevised average of 2,635,000. This is the lowest level for this average since November 24, 2007 when it was 2,616,750.



## UNADJUSTED DATA

The advance number of actual initial claims under state programs, unadjusted, totaled 312,129 in the week ending June 7, an increase of 47,996 (or 18.2 percent) from the previous week. The seasonal factors had expected an increase of 44,439 (or 16.8 percent) from the previous week. There were 332,964 initial claims in the comparable week in 2013.

The advance unadjusted insured unemployment rate was 1.8 percent during the week ending May 31, unchanged from the prior week. The advance unadjusted number for persons claiming UI benefits in state programs totaled 2,423,492, an increase of 29,114 (or 1.2 percent) from the preceding week. The seasonal factors had expected an increase of 18,218 (or 0.8 percent) from the previous week. A year earlier the rate was 2.1 percent and the volume was 2,771,143.



The total number of people claiming benefits in all programs for the week ending May 24 was 2,447,338, a decrease of 66,040 from the previous week. There were 4,507,942 persons claiming benefits in all programs in the comparable week in 2013.

No state was triggered "on" the Extended Benefits program during the week ending May 24.

Initial claims for UI benefits filed by former Federal civilian employees totaled 1,348 in the week ending May 31, an increase of 281 from the prior week. There were 1,535 initial claims filed by newly discharged veterans, an increase of 87 from the preceding week.

There were 11,371 former Federal civilian employees claiming UI benefits for the week ending May 24, a decrease of 935 from the previous week. Newly discharged veterans claiming benefits totaled 23,719, a decrease of 985 from the prior week.

The highest insured unemployment rates in the week ending May 24 were in Alaska (3.9), Puerto Rico (3.1), Connecticut (2.8), New Jersey (2.8), California (2.7), Pennsylvania (2.7), Nevada (2.6), Illinois (2.4), Massachusetts (2.3), Oregon (2.2), and Rhode Island (2.2).

The largest increases in initial claims for the week ending May 31 were in Tennessee (+949), Puerto Rico (+787), Illinois (+654), New Mexico (+626), and Washington (+547), while the largest decreases were in California (-1,944), New Jersey (-1,654), Pennsylvania (-1,416), Massachusetts (-1,152), and North Carolina (-1,037).

---

UNEMPLOYMENT INSURANCE DATA FOR REGULAR STATE PROGRAMS

---

| <b>WEEK ENDING</b>                                  | <b>June 7</b> | <b>May 31</b> | <b>Change</b> | <b>May 24</b> | <b><u>Prior Year</u><sup>1</sup></b> |
|---|---------------|---------------|---------------|---------------|--------------------------------------|
| Initial Claims (SA)                                 | 317,000       | 313,000       | +4,000        | 304,000       | 337,000                              |
| Initial Claims (NSA)                                | 312,129       | 264,133       | +47,996       | 275,412       | 332,964                              |
| 4-Wk Moving Average (SA)                            | 315,250       | 310,500       | +4,750        | 312,500       | 344,500                              |
| <b>WEEK ENDING</b>                                  | <b>May 31</b> | <b>May 24</b> | <b>Change</b> | <b>May 17</b> | <b><u>Prior Year</u><sup>1</sup></b> |
| Insured Unemployment (SA)                           | 2,614,000     | 2,603,000     | +11,000       | 2,623,000     | 2,980,000                            |
| Insured Unemployment (NSA)                          | 2,423,492     | 2,394,378     | +29,114       | 2,455,022     | 2,771,143                            |
| 4-Wk Moving Average (SA)                            | 2,622,000     | 2,635,000     | -13,000       | 2,653,250     | 2,974,000                            |
| <u>Insured Unemployment Rate (SA)</u> <sup>2</sup>  | 2.0%          | 2.0%          | 0.0           | 2.0%          | 2.3%                                 |
| <u>Insured Unemployment Rate (NSA)</u> <sup>2</sup> | 1.8%          | 1.8%          | 0.0           | 1.9%          | 2.1%                                 |

---

INITIAL CLAIMS FILED IN FEDERAL PROGRAMS (UNADJUSTED)

---

| <b>WEEK ENDING</b>              | <b>May 31</b> | <b>May 24</b> | <b>Change</b> | <b><u>Prior Year</u><sup>1</sup></b> |
|---------------------------------|---------------|---------------|---------------|--------------------------------------|
| Federal Employees (UCFE)        | 1,348         | 1,067         | +281          | 1,240                                |
| Newly Discharged Veterans (UCX) | 1,535         | 1,448         | +87           | 1,882                                |

---

PERSONS CLAIMING UI BENEFITS IN ALL PROGRAMS (UNADJUSTED)

---

| <b>WEEK ENDING</b>                            | <b>May 24</b> | <b>May 17</b> | <b>Change</b> | <b><u>Prior Year</u><sup>1</sup></b> |
|---|---------------|---------------|---------------|--------------------------------------|
| Regular State                                 | 2,390,008     | 2,449,765     | -59,757       | 2,729,827                            |
| Federal Employees                             | 11,371        | 12,306        | -935          | 16,286                               |
| Newly Discharged Veterans                     | 23,719        | 24,704        | -985          | 34,430                               |
| <u>Extended Benefits</u> <sup>3</sup>         | 132           | 102           | +30           | 387                                  |
| <u>State Additional Benefits</u> <sup>4</sup> | 8,292         | 9,306         | -1,014        | 4,713                                |
| <u>STC / Workshare</u> <sup>5</sup>           | 13,816        | 17,195        | -3,379        | 18,841                               |
| <u>TOTAL</u> <sup>6</sup>                     | 2,447,338     | 2,513,378     | -66,040       | 4,507,942                            |

FOOTNOTES

SA - Seasonally Adjusted Data, NSA - Not Seasonally Adjusted Data

1. Prior year is comparable to most recent data.
2. Most recent week used covered employment of 131,532,656 as denominator.
3. Information on the EB program can be found here: [EB Program information](#)
4. Some states maintain additional benefit programs for those claimants who exhaust regular, extended and emergency benefits. Information on states that participate, and the extent of benefits paid, can be found starting on page 4-5 of this link: [Extensions and Special Programs PDF](#)
5. Information on STC/Worksharing can be found starting on page 4-9 of the following link: [Extensions and Special Programs PDF](#)
6. Prior Year Total includes Emergency Unemployment Compensation (EUC08) claimants.

---

**UNADJUSTED INITIAL CLAIMS FOR WEEK ENDED MAY 31, 2014**

---

**STATES WITH A DECREASE OF MORE THAN 1,000**

---

| <b>State</b> | <b>Change</b> | <b>State Supplied Comment</b>   |
|--------------|---------------|---|
| CA           | -1,944        | No comment.   |
| NJ           | -1,654        | Fewer layoffs in the administrative, support, waste management, and remediation services, manufacturing, trade, and accommodation and food services industries. |
| PA           | -1,416        | Fewer layoffs in the food services and manufacturing industries.  |
| MA           | -1,152        | Fewer layoffs in the accommodation and food services, trade, and professional services industries.  |
| NC           | -1,037        | No comment.   |

**STATES WITH AN INCREASE OF MORE THAN 1,000**

---

| <b>State</b> | <b>Change</b> | <b>State Supplied Comment</b> |
|--------------|---------------|-------------------------------|
| None         |               |                               |

---

## Seasonally Adjusted US Weekly UI Claims (in thousands)

| Week Ending        | Change from    |            |                | Insured Unemployment | Change from |                |     | IUR |
|--------------------|----------------|------------|----------------|----------------------|-------------|----------------|-----|-----|
|                    | Initial Claims | Prior Week | 4-Week Average |                      | Prior Week  | 4-Week Average |     |     |
| June 1, 2013       | 347            | -3         | 349.00         | 2980                 | 1           | 2974.00        | 2.3 |     |
| June 8, 2013       | 337            | -10        | 344.50         | 2975                 | -5          | 2982.00        | 2.3 |     |
| June 15, 2013      | 352            | 15         | 346.50         | 2977                 | 2           | 2977.75        | 2.3 |     |
| June 22, 2013      | 345            | -7         | 345.25         | 2959                 | -18         | 2972.75        | 2.3 |     |
| June 29, 2013      | 344            | -1         | 344.50         | 3003                 | 44          | 2978.50        | 2.3 |     |
| July 6, 2013       | 353            | 9          | 348.50         | 3079                 | 76          | 3004.50        | 2.4 |     |
| July 13, 2013      | 339            | -14        | 345.25         | 2991                 | -88         | 3008.00        | 2.3 |     |
| July 20, 2013      | 343            | 4          | 344.75         | 2950                 | -41         | 3005.75        | 2.3 |     |
| July 27, 2013      | 333            | -10        | 342.00         | 3001                 | 51          | 3005.25        | 2.3 |     |
| August 3, 2013     | 335            | 2          | 337.50         | 2963                 | -38         | 2976.25        | 2.3 |     |
| August 10, 2013    | 329            | -6         | 335.00         | 2981                 | 18          | 2973.75        | 2.3 |     |
| August 17, 2013    | 338            | 9          | 333.75         | 2981                 | 0           | 2981.50        | 2.3 |     |
| August 24, 2013    | 336            | -2         | 334.50         | 2928                 | -53         | 2963.25        | 2.3 |     |
| August 31, 2013    | 328            | -8         | 332.75         | 2845                 | -83         | 2933.75        | 2.2 |     |
| September 7, 2013  | 307            | -21        | 327.25         | 2812                 | -33         | 2891.50        | 2.2 |     |
| September 14, 2013 | 318            | 11         | 322.25         | 2847                 | 35          | 2858.00        | 2.2 |     |
| September 21, 2013 | 316            | -2         | 317.25         | 2916                 | 69          | 2855.00        | 2.2 |     |
| September 28, 2013 | 318            | 2          | 314.75         | 2910                 | -6          | 2871.25        | 2.2 |     |
| October 5, 2013    | 362            | 44         | 328.50         | 2888                 | -22         | 2890.25        | 2.2 |     |
| October 12, 2013   | 355            | -7         | 337.75         | 2881                 | -7          | 2898.75        | 2.2 |     |
| October 19, 2013   | 347            | -8         | 345.50         | 2896                 | 15          | 2893.75        | 2.2 |     |
| October 26, 2013   | 346            | -1         | 352.50         | 2890                 | -6          | 2888.75        | 2.2 |     |
| November 2, 2013   | 341            | -5         | 347.25         | 2843                 | -47         | 2877.50        | 2.2 |     |
| November 9, 2013   | 342            | 1          | 344.00         | 2889                 | 46          | 2879.50        | 2.2 |     |
| November 16, 2013  | 332            | -10        | 340.25         | 2813                 | -76         | 2858.75        | 2.2 |     |
| November 23, 2013  | 324            | -8         | 334.75         | 2804                 | -9          | 2837.25        | 2.2 |     |
| November 30, 2013  | 317            | -7         | 328.75         | 2837                 | 33          | 2835.75        | 2.2 |     |
| December 7, 2013   | 358            | 41         | 332.75         | 2887                 | 50          | 2835.25        | 2.2 |     |
| December 14, 2013  | 368            | 10         | 341.75         | 2925                 | 38          | 2863.25        | 2.2 |     |
| December 21, 2013  | 339            | -29        | 345.50         | 2840                 | -85         | 2872.25        | 2.2 |     |
| December 28, 2013  | 344            | 5          | 352.25         | 2863                 | 23          | 2878.75        | 2.2 |     |
| January 4, 2014    | 333            | -11        | 346.00         | 2945                 | 82          | 2893.25        | 2.2 |     |
| January 11, 2014   | 329            | -4         | 336.25         | 2951                 | 6           | 2899.75        | 2.3 |     |
| January 18, 2014   | 334            | 5          | 335.00         | 2903                 | -48         | 2915.50        | 2.2 |     |
| January 25, 2014   | 345            | 11         | 335.25         | 2915                 | 12          | 2928.50        | 2.2 |     |
| February 1, 2014   | 328            | -17        | 334.00         | 2918                 | 3           | 2921.75        | 2.2 |     |
| February 8, 2014   | 343            | 15         | 337.50         | 2936                 | 18          | 2918.00        | 2.2 |     |
| February 15, 2014  | 330            | -13        | 336.50         | 2941                 | 5           | 2927.50        | 2.2 |     |
| February 22, 2014  | 351            | 21         | 338.00         | 2890                 | -51         | 2921.25        | 2.2 |     |
| March 1, 2014      | 325            | -26        | 337.25         | 2850                 | -40         | 2904.25        | 2.2 |     |
| March 8, 2014      | 319            | -6         | 331.25         | 2869                 | 19          | 2887.50        | 2.2 |     |
| March 15, 2014     | 323            | 4          | 329.50         | 2814                 | -55         | 2855.75        | 2.1 |     |
| March 22, 2014     | 310            | -13        | 319.25         | 2838                 | 24          | 2842.75        | 2.2 |     |
| March 29, 2014     | 332            | 22         | 321.00         | 2750                 | -88         | 2817.75        | 2.1 |     |
| April 5, 2014      | 301            | -31        | 316.50         | 2741                 | -9          | 2785.75        | 2.1 |     |
| April 12, 2014     | 305            | 4          | 312.00         | 2674                 | -67         | 2750.75        | 2.0 |     |
| April 19, 2014     | 330            | 25         | 317.00         | 2761                 | 87          | 2731.50        | 2.1 |     |
| April 26, 2014     | 345            | 15         | 320.25         | 2676                 | -85         | 2713.00        | 2.0 |     |
| May 3, 2014        | 321            | -24        | 325.25         | 2666                 | -10         | 2694.25        | 2.0 |     |
| May 10, 2014       | 298            | -23        | 323.50         | 2648                 | -18         | 2687.75        | 2.0 |     |
| May 17, 2014       | 327            | 29         | 322.75         | 2623                 | -25         | 2653.25        | 2.0 |     |
| May 24, 2014       | 304            | -23        | 312.50         | 2603                 | -20         | 2635.00        | 2.0 |     |
| May 31, 2014       | 313            | 9          | 310.50         | 2614                 | 11          | 2622.00        | 2.0 |     |
| June 7, 2014       | 317            | 4          | 315.25         |                      |             |                |     |     |

Initial Claims Filed During Week Ended May 31  
INITIAL CLAIMS

Insured Unemployment For Week Ended May 24  
INSURED UNEMPLOYMENT

| STATE                | CHANGE FROM |           |          |                   |                  |         | CHANGE FROM      |           |          |                   |                  | ALL PROGRAMS EXCLUDING RAILROAD RETIREMENT |
|----------------------|-------------|-----------|----------|-------------------|------------------|---------|------------------|-----------|----------|-------------------|------------------|--|
|                      | STATE       | LAST WEEK | YEAR AGO | UCFE <sup>1</sup> | UCX <sup>1</sup> | STATE   | (%) <sup>2</sup> | LAST WEEK | YEAR AGO | UCFE <sup>1</sup> | UCX <sup>1</sup> |  |
| Alabama              | 4241        | 468       | -416     | 18                | 23               | 27167   | 1.5              | 83        | -5126    | 126               | 260              | 27553                                      |
| Alaska               | 1396        | -113      | -246     | 6                 | 7                | 12347   | 3.9              | -1188     | -1532    | 94                | 98               | 12539                                      |
| Arizona              | 5469        | 168       | 104      | 94                | 5                | 40287   | 1.7              | -315      | -561     | 188               | 289              | 40764                                      |
| Arkansas             | 2818        | -71       | -596     | 9                 | 19               | 21912   | 1.9              | -339      | -5451    | 95                | 188              | 22195                                      |
| California           | 51167       | -1944     | 5422     | 269               | 258              | 402159  | 2.7              | -28953    | -20792   | 1962              | 4306             | 408445                                     |
| Colorado             | 2506        | -275      | -254     | 9                 | 51               | 36644   | 1.6              | -237      | -2127    | 239               | 1006             | 37889                                      |
| Connecticut          | 2669        | -757      | -181     | 7                 | 15               | 44616   | 2.8              | -540      | -4047    | 77                | 195              | 44888                                      |
| Delaware             | 608         | -28       | -250     | 0                 | 1                | 8022    | 2.0              | 977       | -443     | 29                | 49               | 8101                                       |
| District of Columbia | 364         | -10       | -377     | 7                 | 0                | 9786    | 1.9              | -106      | -654     | 337               | 19               | 10144                                      |
| Florida              | 11521       | -797      | 646      | 23                | 115              | 91197   | 1.2              | -1903     | -20019   | 373               | 770              | 92340                                      |
| Georgia              | 7625        | -232      | -1389    | 35                | 58               | 45765   | 1.2              | 824       | -14272   | 321               | 847              | 46933                                      |
| Hawaii               | 1587        | -53       | -225     | 5                 | 22               | 9883    | 1.7              | -105      | -1184    | 123               | 216              | 10222                                      |
| Idaho                | 971         | -248      | -370     | 4                 | 7                | 9051    | 1.5              | -552      | -1814    | 46                | 73               | 9170                                       |
| Illinois             | 10352       | 654       | -3245    | 16                | 20               | 131646  | 2.4              | -7900     | -9589    | 484               | 707              | 132837                                     |
| Indiana              | 3564        | -538      | -1257    | 9                 | 20               | 31327   | 1.1              | -1075     | -11116   | 243               | 249              | 31819                                      |
| Iowa                 | 2135        | -326      | -700     | 5                 | 6                | 17202   | 1.2              | -512      | -4196    | 63                | 113              | 17378                                      |
| Kansas               | 2695        | 256       | -651     | 5                 | 7                | 20139   | 1.5              | -125      | -2614    | 204               | 255              | 20598                                      |
| Kentucky             | 3329        | 158       | 198      | 13                | 10               | 25627   | 1.5              | -892      | -6342    | 136               | 501              | 26264                                      |
| Louisiana            | 2976        | -9        | -330     | 9                 | 14               | 19576   | 1.1              | 628       | -3071    | 78                | 119              | 19773                                      |
| Maine                | 902         | -71       | -169     | 0                 | 0                | 10067   | 1.8              | -516      | -1209    | 27                | 45               | 10139                                      |
| Maryland             | 3910        | -607      | -542     | 58                | 13               | 48744   | 2.0              | -306      | -3513    | 504               | 404              | 49654                                      |
| Massachusetts        | 5303        | -1152     | 61       | 9                 | 25               | 74312   | 2.3              | 630       | -5063    | 240               | 402              | 74954                                      |
| Michigan             | 6582        | -172      | -1553    | 16                | 32               | 82733   | 2.1              | 3732      | 6396     | 156               | 466              | 83355                                      |
| Minnesota            | 3563        | -83       | -1049    | 9                 | 7                | 38667   | 1.5              | -1923     | -6940    | 87                | 253              | 39007                                      |
| Mississippi          | 3019        | 81        | -281     | 11                | 6                | 19772   | 1.9              | 646       | -5069    | 165               | 122              | 20059                                      |
| Missouri             | 6345        | -34       | -1311    | 59                | 17               | 37829   | 1.5              | 652       | -9103    | 242               | 192              | 38263                                      |
| Montana              | 866         | 13        | -797     | 10                | 3                | 6919    | 1.6              | -816      | -2558    | 93                | 82               | 7094                                       |
| Nebraska             | 1473        | 153       | -296     | 5                 | 4                | 7198    | 0.8              | 19        | -2102    | 27                | 35               | 7260                                       |
| Nevada               | 2996        | -17       | -455     | 7                 | 14               | 29013   | 2.6              | -331      | -1636    | 149               | 245              | 29407                                      |
| New Hampshire        | 697         | -92       | -51      | 0                 | 2                | 6686    | 1.1              | -167      | -1150    | 10                | 17               | 6713                                       |
| New Jersey           | 6207        | -1654     | -1431    | 16                | 25               | 105793  | 2.8              | -4624     | -7477    | 243               | 516              | 106653                                     |
| New Mexico           | 1948        | 626       | 56       | 20                | 12               | 15607   | 2.1              | 87        | -760     | 88                | 143              | 15838                                      |
| New York             | 17649       | -574      | -2686    | 40                | 73               | 173038  | 2.0              | -2653     | -34768   | 676               | 1137             | 174851                                     |
| North Carolina       | 4622        | -1037     | -5555    | 7                 | 40               | 53067   | 1.4              | -795      | -36512   | 175               | 729              | 53971                                      |
| North Dakota         | 323         | 20        | -209     | 118               | 0                | 1645    | 0.4              | -142      | -908     | 19                | 13               | 1677                                       |
| Ohio                 | 8227        | -856      | -735     | 6                 | 53               | 66799   | 1.3              | -691      | -12032   | 170               | 647              | 67616                                      |
| Oklahoma             | 1588        | -55       | -378     | 4                 | 14               | 16110   | 1.1              | -59       | -4072    | 79                | 198              | 16387                                      |
| Oregon               | 3981        | -510      | -1956    | 25                | 23               | 35530   | 2.2              | -825      | -8620    | 322               | 323              | 36175                                      |
| Pennsylvania         | 15847       | -1416     | -2509    | 63                | 76               | 148278  | 2.7              | -2858     | -8048    | 624               | 1032             | 149934                                     |
| Puerto Rico          | 3324        | 787       | 307      | 5                 | 9                | 28161   | 3.1              | 515       | -13868   | 92                | 286              | 28539                                      |
| Rhode Island         | 788         | -46       | 31       | 4                 | 3                | 9646    | 2.2              | -341      | -323     | 41                | 56               | 9743                                       |
| South Carolina       | 3099        | -259      | -472     | 1                 | 24               | 17952   | 1.0              | 153       | -11437   | 61                | 179              | 18192                                      |
| South Dakota         | 278         | 7         | -71      | 153               | 0                | 1351    | 0.3              | -68       | -565     | 31                | 7                | 1389                                       |
| Tennessee            | 5497        | 949       | -1066    | 7                 | 19               | 29955   | 1.1              | -74       | -11237   | 123               | 276              | 30354                                      |
| Texas                | 15735       | -960      | 523      | 73                | 230              | 149155  | 1.4              | -692      | -8691    | 736               | 3061             | 152959                                     |
| Utah                 | 1272        | -28       | -426     | 32                | 9                | 11816   | 1.0              | -369      | -2214    | 119               | 106              | 12041                                      |
| Vermont              | 400         | -173      | -84      | 0                 | 2                | 4764    | 1.6              | -349      | -935     | 11                | 22               | 4797                                       |
| Virgin Islands       | 29          | -9        | -28      | 0                 | 1                | 784     | 2.1              | -16       | -236     | 4                 | 6                | 794  |
| Virginia             | 3968        | -334      | -394     | 11                | 0                | 35335   | 1.0              | -613      | -5878    | 310               | 857              | 36502                                      |
| Washington           | 6930        | 547       | -938     | 27                | 120              | 56154   | 2.0              | -1340     | -7927    | 288               | 1276             | 57718                                      |
| West Virginia        | 1083        | -122      | -104     | 2                 | 6                | 13094   | 1.9              | -1413     | -1647    | 79                | 99               | 13272                                      |
| Wisconsin            | 7364        | -481      | -1688    | 7                 | 11               | 50748   | 1.9              | -2474     | -13950   | 144               | 183              | 51076                                      |
| Wyoming              | 325         | -23       | -102     | 0                 | 4                | 3303    | 1.2              | -393      | -1202    | 18                | 44               | 3365                                       |
| Totals               | 264133      | -11279    | -30475   | 1348              | 1535             | 2394378 | 1.8              | -60644    | -340204  | 11371             | 23719            | 2429600                                    |

Figures Appearing In columns showing Over-The-Week Changes reflect all revisions in data for prior week submitted by State agencies.

1. The Unemployment Compensation program for Federal Employees (UCFE) and the Unemployment Compensation for Ex-servicemembers (UCX) exclude claims filed jointly under other programs to avoid duplication.
2. Rate is not seasonally adjusted. The source of US total covered employment is BLS.

## TECHNICAL NOTES

This news release presents the weekly unemployment insurance (UI) claims reported by each state's unemployment insurance program offices. These claims may be used for monitoring workload volume, assessing state program operations and for assessing labor market conditions. States initially report claims directly taken by the state liable for the benefit payments, regardless of where the claimant who filed the claim resided. These are the basis for the advance initial claims and continued claims reported each week. These data come from ETA 538, Advance Weekly Initial and Continued Claims Report. The following week initial claims and continued claims are revised based on a second reporting by states that reflect the claimants by state of residence. These data come from the ETA 539, Weekly Claims and Extended Benefits Trigger Data Report.

### A. Initial Claims

An initial claim is a claim filed by an unemployed individual after a separation from an employer. The claimant requests a determination of basic eligibility for the UI program. When an initial claim is filed with a state, certain programmatic activities take place and these result in activity counts including the count of initial claims.

The count of U.S. initial claims for unemployment insurance is a leading economic indicator because it is an indication of emerging labor market conditions in the country. However, these are weekly administrative data which are difficult to seasonally adjust, making the series subject to some volatility.

### B. Continued Weeks Claimed

A person who has already filed an initial claim and who has experienced a week of unemployment then files a continued claim to claim benefits for that week of unemployment. Continued claims are also referred to as insured unemployment.

The count of U.S. continued weeks claimed is also a good indicator of labor market conditions. Continued claims reflect the current number of insured unemployed workers filing for UI benefits in the nation. While continued claims are not a leading indicator (they roughly coincide with economic cycles at their peaks and lag at cycle troughs), they provide confirming evidence of the direction of the U.S. economy.

### C. Seasonal Adjustments and Annual Revisions

Over the course of a year, the weekly changes in the levels of initial claims and continued claims undergo regularly occurring fluctuations. These fluctuations may result from seasonal changes in weather, major holidays, the opening and closing of schools, or other similar events. Because these seasonal events follow a more or less regular pattern each year, their influence on the level of a series can be tempered by adjusting for regular seasonal variation. These adjustments make trend and cycle developments easier to spot.

At the beginning of each calendar year, the Bureau of Labor Statistics provides the Employment and Training Administration (ETA) with a set of seasonal factors to apply to the unadjusted data during that year.

Concurrent with the implementation and release of the new seasonal factors, ETA incorporates revisions to the UI claims historical series caused by updates to the unadjusted data.

[Weekly Claims Archives](#)  
[Weekly Claims Data](#)

U.S. Department of Labor news materials are accessible at <http://www.dol.gov>. The Department's [Reasonable Accommodation Resource Center](#) converts Departmental information and documents into alternative formats, which include Braille and large print. For alternative format requests, please contact the Department at (202) 693-7828 (voice) or (800) 877-8339 (federal relay).