



News Release

Connect with DOL at
<http://social.dol.gov!>



U.S. Department of Labor
Employment and Training Administration
Washington, D.C.
Release Number: USDL 14-950-NAT

Program Contacts
Tom Stengle (202) 693-2991
Tony Sznoluch (202) 693-3176
Media Contact (202) 693-4676

TRANSMISSION OF MATERIALS IN THIS RELEASE IS EMBARGOED UNTIL
8:30 A.M. (Eastern) Thursday, May 29, 2014

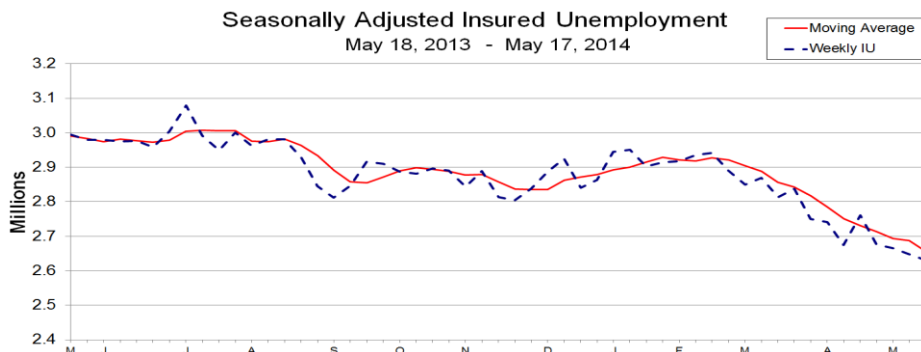
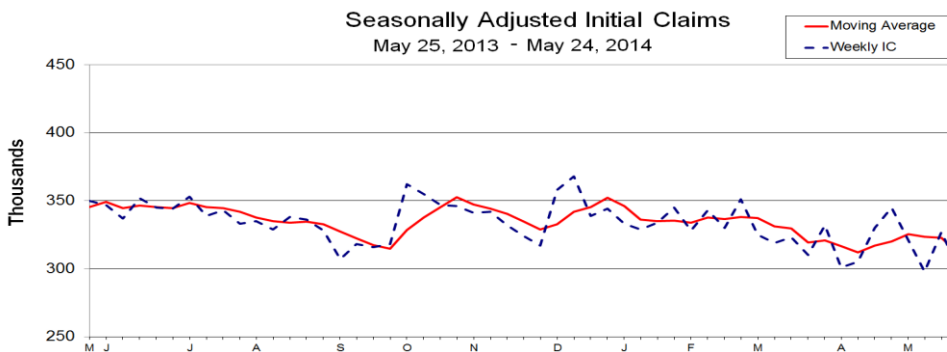
UNEMPLOYMENT INSURANCE WEEKLY CLAIMS

SEASONALLY ADJUSTED DATA

In the week ending May 24, the advance figure for seasonally adjusted **initial claims** was 300,000, a decrease of 27,000 from the previous week's revised level. The previous week's level was revised up by 1,000 from 326,000 to 327,000. The 4-week moving average was 311,500, a decrease of 11,250 from the previous week's revised average. This is the lowest level for this average since August 11, 2007 when it was 311,250. The previous week's average was revised up by 250 from 322,500 to 322,750.

There were no special factors impacting this week's initial claims.

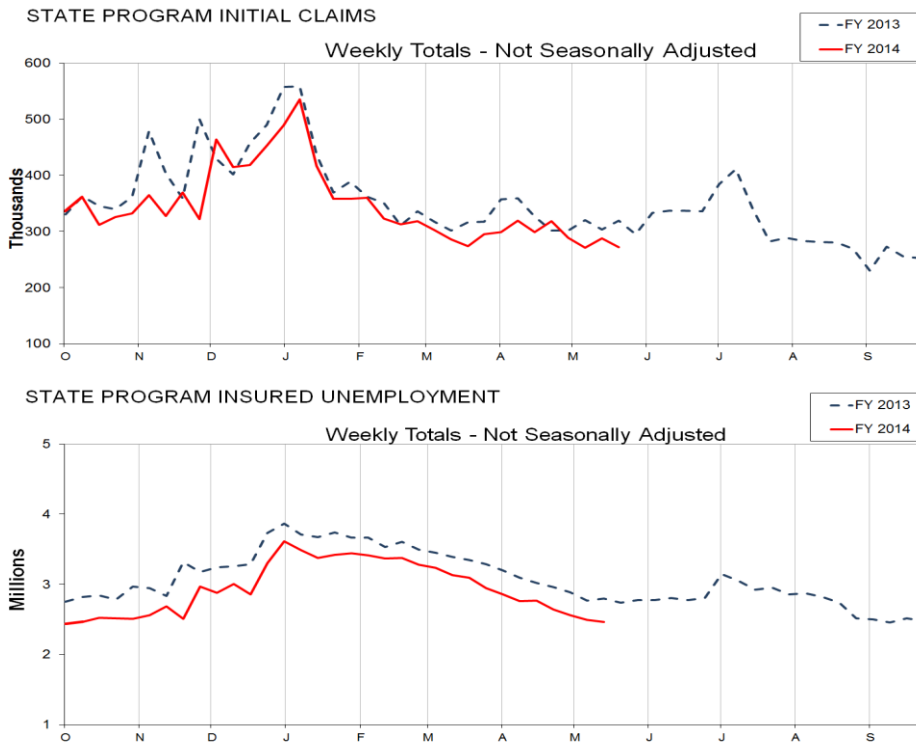
The advance seasonally adjusted **insured unemployment rate** was 2.0 percent for the week ending May 17, unchanged from the previous week's unrevised rate. The advance number for seasonally adjusted **insured unemployment** during the week ending May 17 was 2,631,000, a decrease of 17,000 from the previous week's revised level. This is the lowest level for insured unemployment since November 17, 2007 when it was 2,609,000. The previous week's level was revised down by 5,000 from 2,653,000 to 2,648,000. The 4-week moving average was 2,655,250, a decrease of 32,500 from the previous week's revised average. This is the lowest level for this average since December 8, 2007 when it was 2,638,500. The previous week's average was revised down by 1,250 from 2,689,000 to 2,687,750.



UNADJUSTED DATA

The advance number of actual initial claims under state programs, unadjusted, totaled 271,865 in the week ending May 24, a decrease of 15,533 (or -5.4 percent) from the previous week. The seasonal factors had expected an increase of 8,818 (or +3.1 percent) from the previous week. There were 319,508 initial claims in the comparable week in 2013.

The advance unadjusted insured unemployment rate was 1.9 percent during the week ending May 17, unchanged from the prior week. The advance unadjusted number for persons claiming UI benefits in state programs totaled 2,462,528, a decrease of 31,967 (or -1.3 percent) from the preceding week. The seasonal factors had expected a decrease of 15,889 (or -0.6 percent) from the previous week. A year earlier the rate was 2.2 percent and the volume was 2,799,681.



The total number of people claiming benefits in all programs for the week ending May 10 was 2,553,581, a decrease of 66,969 from the previous week. There were 4,571,189 persons claiming benefits in all programs in the comparable week in 2013.

No state was triggered "on" the Extended Benefits program during the week ending May 10.

Initial claims for UI benefits filed by former Federal civilian employees totaled 1,042 in the week ending May 17, an increase of 122 from the prior week. There were 1,639 initial claims filed by newly discharged veterans, an increase of 78 from the preceding week.

There were 12,491 former Federal civilian employees claiming UI benefits for the week ending May 10, a decrease of 1,268 from the previous week. Newly discharged veterans claiming benefits totaled 25,128, an increase of 2 from the prior week.

The highest insured unemployment rates in the week ending May 10 were in Alaska (4.3), Puerto Rico (3.3), California (3.0), New Jersey (3.0), Connecticut (2.8), Pennsylvania (2.8), Nevada (2.6), Illinois (2.5), Massachusetts (2.3), Oregon (2.3), Rhode Island (2.3), and Virgin Island (2.3).

The largest increases in initial claims for the week ending May 17 were in Michigan (+5,809), California (+4,477), Kansas (+2,492), Missouri (+2,034), and Pennsylvania (+1,181), while the largest decreases were in Wisconsin (-1,870), New York (-1,348), Minnesota (-1,001), Florida (-664), and Tennessee (-620).

UNEMPLOYMENT INSURANCE DATA FOR REGULAR STATE PROGRAMS

WEEK ENDING	May 24	May 17	Change	May 10	<u>Prior Year</u>¹
Initial Claims (SA)	300,000	327,000	-27,000	298,000	350,000
Initial Claims (NSA)	271,865	287,398	-15,533	270,738	319,508
4-Wk Moving Average (SA)	311,500	322,750	-11,250	323,500	345,250
WEEK ENDING	May 17	May 10	Change	May 3	<u>Prior Year</u>¹
Insured Unemployment (SA)	2,631,000	2,648,000	-17,000	2,666,000	2,994,000
Insured Unemployment (NSA)	2,462,528	2,494,495	-31,967	2,559,236	2,799,681
4-Wk Moving Average (SA)	2,655,250	2,687,750	-32,500	2,694,250	2,991,250
<u>Insured Unemployment Rate (SA)</u> ²	2.0%	2.0%	0.0	2.0%	2.3%
<u>Insured Unemployment Rate (NSA)</u> ²	1.9%	1.9%	0.0	1.9%	2.2%

INITIAL CLAIMS FILED IN FEDERAL PROGRAMS (UNADJUSTED)

WEEK ENDING	May 17	May 10	Change	<u>Prior Year</u>¹
Federal Employees (UCFE)	1,042	920	+122	1,050
Newly Discharged Veterans (UCX)	1,639	1,561	+78	2,060

PERSONS CLAIMING UI BENEFITS IN ALL PROGRAMS (UNADJUSTED)

WEEK ENDING	May 10	May 3	Change	<u>Prior Year</u>¹
Regular State	2,489,912	2,553,457	-63,545	2,763,797
Federal Employees	12,491	13,759	-1,268	17,197
Newly Discharged Veterans	25,128	25,126	+2	35,258
<u>Extended Benefits</u> ³	61	59	+2	471
<u>State Additional Benefits</u> ⁴	9,563	9,711	-148	5,858
<u>STC / Workshare</u> ⁵	16,426	18,438	-2,012	21,949
<u>TOTAL</u> ⁶	2,553,581	2,620,550	-66,969	4,571,189

FOOTNOTES

SA - Seasonally Adjusted Data, NSA - Not Seasonally Adjusted Data

1. Prior year is comparable to most recent data.
2. Most recent week used covered employment of 131,532,656 as denominator.
3. Information on the EB program can be found here: [EB Program information](#)
4. Some states maintain additional benefit programs for those claimants who exhaust regular, extended and emergency benefits. Information on states that participate, and the extent of benefits paid, can be found starting on page 4-5 of this link: [Extensions and Special Programs PDF](#)
5. Information on STC/Worksharing can be found starting on page 4-9 of the following link: [Extensions and Special Programs PDF](#)
6. Prior Year Total includes Emergency Unemployment Compensation (EUC08) claimants.

UNADJUSTED INITIAL CLAIMS FOR WEEK ENDED MAY 17, 2014

STATES WITH AN DECREASE OF MORE THAN 1,000

State	Change	State Supplied Comment
WI	-1,870	No comment.
NY	-1,348	Fewer layoffs in the construction, professional, scientific, and technical services, and manufacturing industries.
MN	-1,001	No comment.

STATES WITH AN INCREASE OF MORE THAN 1,000

State	Change	State Supplied Comment
MI	+5,809	Layoffs in the wholesale trade industry.
CA	+4,477	Layoffs in the service industry.
KS	+2,492	Layoffs in the manufacturing industry.
MO	+2,034	Layoffs in the manufacturing, accommodation and food services, and health care and social assistance industries.
PA	+1,181	Layoffs in the food service, retail trade, and manufacturing industries.

Seasonally Adjusted US Weekly Claims (in thousands)

Week Ending	Change from			Insured Unemployment	Change from		IUR
	Initial Claims	Prior Week	4-Week Average		Prior Week	4-Week Average	
May 18, 2013	344	-11	340.75	2994	51	2991.25	2.3
May 25, 2013	350	6	345.25	2979	-15	2983.25	2.3
June 1, 2013	347	-3	349.00	2980	1	2974.00	2.3
June 8, 2013	337	-10	344.50	2975	-5	2982.00	2.3
June 15, 2013	352	15	346.50	2977	2	2977.75	2.3
June 22, 2013	345	-7	345.25	2959	-18	2972.75	2.3
June 29, 2013	344	-1	344.50	3003	44	2978.50	2.3
July 6, 2013	353	9	348.50	3079	76	3004.50	2.4
July 13, 2013	339	-14	345.25	2991	-88	3008.00	2.3
July 20, 2013	343	4	344.75	2950	-41	3005.75	2.3
July 27, 2013	333	-10	342.00	3001	51	3005.25	2.3
August 3, 2013	335	2	337.50	2963	-38	2976.25	2.3
August 10, 2013	329	-6	335.00	2981	18	2973.75	2.3
August 17, 2013	338	9	333.75	2981	0	2981.50	2.3
August 24, 2013	336	-2	334.50	2928	-53	2963.25	2.3
August 31, 2013	328	-8	332.75	2845	-83	2933.75	2.2
September 7, 2013	307	-21	327.25	2812	-33	2891.50	2.2
September 14, 2013	318	11	322.25	2847	35	2858.00	2.2
September 21, 2013	316	-2	317.25	2916	69	2855.00	2.2
September 28, 2013	318	2	314.75	2910	-6	2871.25	2.2
October 5, 2013	362	44	328.50	2888	-22	2890.25	2.2
October 12, 2013	355	-7	337.75	2881	-7	2898.75	2.2
October 19, 2013	347	-8	345.50	2896	15	2893.75	2.2
October 26, 2013	346	-1	352.50	2890	-6	2888.75	2.2
November 2, 2013	341	-5	347.25	2843	-47	2877.50	2.2
November 9, 2013	342	1	344.00	2889	46	2879.50	2.2
November 16, 2013	332	-10	340.25	2813	-76	2858.75	2.2
November 23, 2013	324	-8	334.75	2804	-9	2837.25	2.2
November 30, 2013	317	-7	328.75	2837	33	2835.75	2.2
December 7, 2013	358	41	332.75	2887	50	2835.25	2.2
December 14, 2013	368	10	341.75	2925	38	2863.25	2.2
December 21, 2013	339	-29	345.50	2840	-85	2872.25	2.2
December 28, 2013	344	5	352.25	2863	23	2878.75	2.2
January 4, 2014	333	-11	346.00	2945	82	2893.25	2.2
January 11, 2014	329	-4	336.25	2951	6	2899.75	2.3
January 18, 2014	334	5	335.00	2903	-48	2915.50	2.2
January 25, 2014	345	11	335.25	2915	12	2928.50	2.2
February 1, 2014	328	-17	334.00	2918	3	2921.75	2.2
February 8, 2014	343	15	337.50	2936	18	2918.00	2.2
February 15, 2014	330	-13	336.50	2941	5	2927.50	2.2
February 22, 2014	351	21	338.00	2890	-51	2921.25	2.2
March 1, 2014	325	-26	337.25	2850	-40	2904.25	2.2
March 8, 2014	319	-6	331.25	2869	19	2887.50	2.2
March 15, 2014	323	4	329.50	2814	-55	2855.75	2.1
March 22, 2014	310	-13	319.25	2838	24	2842.75	2.2
March 29, 2014	332	22	321.00	2750	-88	2817.75	2.1
April 5, 2014	301	-31	316.50	2741	-9	2785.75	2.1
April 12, 2014	305	4	312.00	2674	-67	2750.75	2.0
April 19, 2014	330	25	317.00	2761	87	2731.50	2.1
April 26, 2014	345	15	320.25	2676	-85	2713.00	2.0
May 3, 2014	321	-24	325.25	2666	-10	2694.25	2.0
May 10, 2014	298	-23	323.50	2648	-18	2687.75	2.0
May 17, 2014	327	29	322.75	2631	-17	2655.25	2.0
May 24, 2014	300	-27	311.50				

Initial Claims Filed During Week Ended May

17

Insured Unemployment For Week Ended May 10

INSURED UNEMPLOYMENT

STATE	INITIAL CLAIMS CHANGE FROM							CHANGE FROM					ALL PROGRAMS EXCLUDING RAILROAD RETIREMENT
	STATE	LAST WEEK	YEAR AGO	UCFE 1	UCX 1	STATE	(%) 2	LAST WEEK	YEAR AGO	UCFE 1	UCX 1		
Alabama	3622	-112	-1007	15	29	26698	1.5	-40	-4480	114	269	27081	
Alaska	1291	-94	-588	7	4	13589	4.3	-1101	-1579	111	98	13798	
Arizona	5042	189	228	11	5	40343	1.7	-177	-1836	162	272	40777	
Arkansas	3288	751	-553	10	10	21599	1.9	-93	-5482	135	192	21926	
California	54281	4477	8362	283	274	446698	3.0	-5145	25220	2501	4773	453982	
Colorado	2675	-9	-196	13	47	37776	1.7	84	-3598	283	1049	39108	
Connecticut	3397	278	-242	6	12	45029	2.8	-1133	-3648	74	217	45320	
Delaware	640	-98	-140	2	1	7044	1.7	-380	-663	33	49	7127	
District of Columbia	394	-3	-469	9	2	9850	1.9	8	-461	360	20	10231	
Florida	13005	-664	8	38	109	97056	1.3	1903	-12807	418	835	98309	
Georgia	7305	-553	-2820	26	86	44876	1.2	-309	-15456	311	863	46050	
Hawaii	1605	-44	-126	13	15	9993	1.7	-105	-1424	118	232	10343	
Idaho	1126	-38	-154	0	4	9928	1.6	-657	-1628	64	74	10066	
Illinois	11105	861	-1557	19	37	139341	2.5	-8160	-8660	489	678	140508	
Indiana	4203	357	-822	19	17	33026	1.2	-1683	-11423	245	294	33565	
Iowa	2297	92	-381	4	5	17652	1.2	-2171	-4602	69	136	17857	
Kansas	4532	2492	1953	2	14	18339	1.4	-612	-3790	200	253	18794	
Kentucky	3931	525	892	22	11	25206	1.5	-1651	-5610	115	526	25847	
Louisiana	2343	134	-395	6	16	18517	1.0	-380	-2218	91	112	18720	
Maine	986	7	-70	0	1	11515	2.0	-1170	-1067	32	58	11605	
Maryland	4137	-39	-809	39	27	49384	2.1	-1117	-4480	511	421	50317	
Massachusetts	5938	290	-624	14	39	73142	2.3	-3910	-7392	213	456	73811	
Michigan	13437	5809	2299	9	37	87998	2.2	6379	6940	178	474	88650	
Minnesota	3532	-1001	-353	7	13	44247	1.7	-8099	-4439	97	262	44606	
Mississippi	2991	-407	-823	10	9	18258	1.7	1348	-4297	194	123	18575	
Missouri	6770	2034	409	34	21	36146	1.4	-548	-7021	205	209	36560	
Montana	897	-25	-76	3	8	7981	1.9	-967	-2077	145	96	8222	
Nebraska	1235	147	-109	2	3	6971	0.8	-279	-2342	23	39	7033	
Nevada	3110	116	-91	13	20	29874	2.6	-207	-1686	165	246	30285	
New Hampshire	793	1	-82	1	3	7040	1.2	-710	-1026	8	17	7065	
New Jersey	8524	445	300	25	33	111430	3.0	-4969	-5424	271	536	112271	
New Mexico	1243	-20	-119	8	13	15846	2.1	85	-262	200	151	16197	
New York	16876	-1348	-2444	43	92	179060	2.1	-7396	-33083	701	1231	180992	
North Carolina	5880	541	-5742	10	42	53424	1.4	-490	-36322	199	829	54452	
North Dakota	219	-42	-67	1	4	2040	0.5	-430	-708	16	14	2070	
Ohio	8117	307	-1094	15	40	68615	1.4	-2882	-13018	173	689	69477	
Oklahoma	1703	89	-413	5	11	16006	1.1	-259	-3929	76	200	16282	
Oregon	5103	668	-195	32	28	37770	2.3	-830	-6935	425	341	38536	
Pennsylvania	18512	1181	-434	77	60	152121	2.8	-4195	-8167	608	1140	153869	
Puerto Rico	2139	-86	-396	5	6	29947	3.3	1725	-10912	114	284	30345	
Rhode Island	1011	-159	-116	3	6	10219	2.3	-527	-1022	51	60	10330	
South Carolina	3756	929	-1350	8	31	17283	1.0	173	-12153	58	178	17519	
South Dakota	302	34	50	2	0	1535	0.4	-115	-363	25	11	1571	
Tennessee	3968	-620	-2001	8	22	31029	1.2	669	-9289	135	320	31484	
Texas	16955	825	-741	90	206	146606	1.4	-888	-7540	699	3152	150465	
Utah	1490	-156	-39	21	7	12398	1.0	-193	-2186	102	102	12602	
Vermont	702	166	-147	1	2	5305	1.8	-454	-597	18	18	5341	
Virgin Islands	49	4	-27	0	0	872	2.3	-116	-78	20	8	900	
Virginia	4720	436	-676	10	39	35396	1.0	105	-6423	335	893	36624	
Washington	7362	-285	-313	19	89	59099	2.1	-3528	-7090	344	1282	60725	
West Virginia	1223	35	-160	3	10	13637	2.0	-1677	-1454	80	107	13824	
Wisconsin	7176	-1870	-1546	19	16	56079	2.1	-6896	-13612	134	194	56411	
Wyoming	460	113	47	0	3	3662	1.3	-571	-1401	43	45	3750	
Totals	287398	16660	-15959	1042	1639	2494495	1.9	-64741	-275000	12491	25128	2532175	

Figures Appearing In columns showing Over-The-Week Changes reflect all revisions in data for prior week submitted by State agencies.

1. The Unemployment Compensation program for Federal Employees (UCFE) and the Unemployment Compensation for Ex-servicemembers (UCX) exclude claims filed jointly under other programs to avoid duplication.
2. Rate is not seasonally adjusted. The source of US total covered employment is BLS.

TECHNICAL NOTES

This news release presents the weekly unemployment insurance (UI) claims reported by each state's unemployment insurance program offices. These claims may be used for monitoring workload volume, assessing state program operations and for assessing labor market conditions. States initially report claims directly taken by the state liable for the benefit payments, regardless of where the claimant who filed the claim resided. These are the basis for the advance initial claims and continued claims reported each week. These data come from ETA 538, Advance Weekly Initial and Continued Claims Report. The following week initial claims and continued claims are revised based on a second reporting by states that reflect the claimants by state of residence. These data come from the ETA 539, Weekly Claims and Extended Benefits Trigger Data Report.

A. Initial Claims

An initial claim is a claim filed by an unemployed individual after a separation from an employer. The claimant requests a determination of basic eligibility for the UI program. When an initial claim is filed with a state, certain programmatic activities take place and these result in activity counts including the count of initial claims.

The count of U.S. initial claims for unemployment insurance is a leading economic indicator because it is an indication of emerging labor market conditions in the country. However, these are weekly administrative data which are difficult to seasonally adjust, making the series subject to some volatility.

B. Continued Weeks Claimed

A person who has already filed an initial claim and who has experienced a week of unemployment then files a continued claim to claim benefits for that week of unemployment. Continued claims are also referred to as insured unemployment.

The count of U.S. continued weeks claimed is also a good indicator of labor market conditions. Continued claims reflect the current number of insured unemployed workers filing for UI benefits in the nation. While continued claims are not a leading indicator (they roughly coincide with economic cycles at their peaks and lag at cycle troughs), they provide confirming evidence of the direction of the U.S. economy.

C. Seasonal Adjustments and Annual Revisions

Over the course of a year, the weekly changes in the levels of initial claims and continued claims undergo regularly occurring fluctuations. These fluctuations may result from seasonal changes in weather, major holidays, the opening and closing of schools, or other similar events. Because these seasonal events follow a more or less regular pattern each year, their influence on the level of a series can be tempered by adjusting for regular seasonal variation. These adjustments make trend and cycle developments easier to spot.

At the beginning of each calendar year, the Bureau of Labor Statistics provides the Employment and Training Administration (ETA) with a set of seasonal factors to apply to the unadjusted data during that year.

Concurrent with the implementation and release of the new seasonal factors, ETA incorporates revisions to the UI claims historical series caused by updates to the unadjusted data.

[Weekly Claims Archives](#)
[Weekly Claims Data](#)

U.S. Department of Labor news materials are accessible at <http://www.dol.gov>. The Department's [Reasonable Accommodation Resource Center](#) converts Departmental information and documents into alternative formats, which include Braille and large print. For alternative format requests, please contact the Department at (202) 693-7828 (voice) or (800) 877-8339 (federal relay).