



News Release

Connect with DOL at
<http://social.dol.gov!>



U.S. Department of Labor
Employment and Training Administration
Washington, D.C.
Release Number: USDL 14-751 NAT

Program Contacts
Tom Stengle (202) 693-2991
Tony Sznoluch (202) 693-3176
Media Contact (202) 693-4676

TRANSMISSION OF MATERIALS IN THIS RELEASE IS EMBARGOED UNTIL
8:30 A.M. (Eastern) Thursday, May 8, 2014

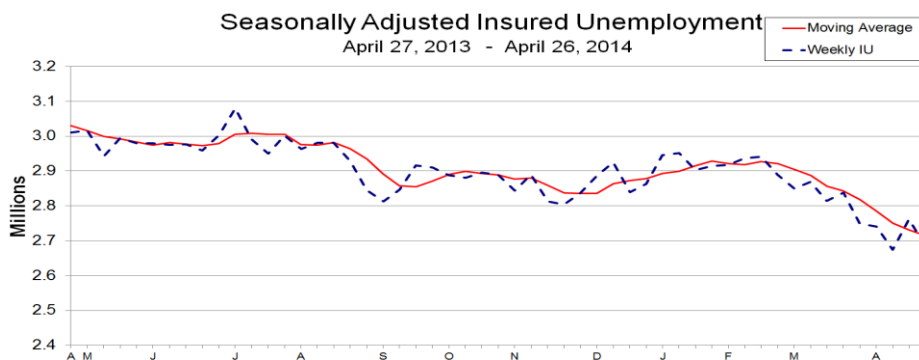
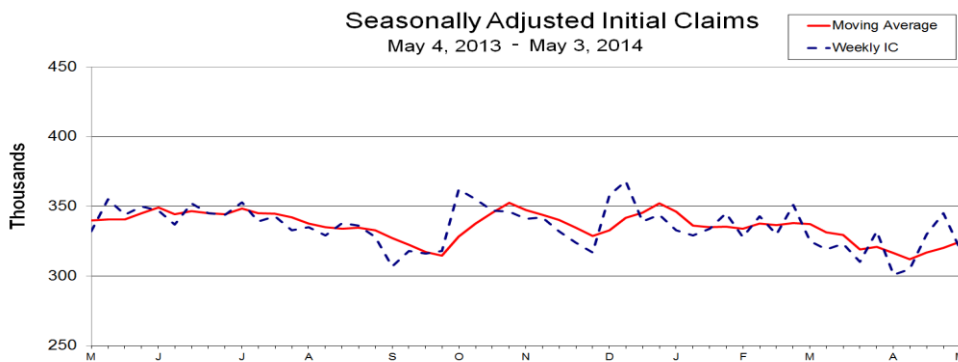
UNEMPLOYMENT INSURANCE WEEKLY CLAIMS

SEASONALLY ADJUSTED DATA

In the week ending May 3, the advance figure for seasonally adjusted **initial claims** was 319,000, a decrease of 26,000 from the previous week's revised level. The previous week's level was revised up by 1,000 from 344,000 to 345,000. The 4-week moving average was 324,750, an increase of 4,500 from the previous week's revised average. The previous week's average was revised up by 250 from 320,000 to 320,250.

There were no special factors impacting this week's initial claims.

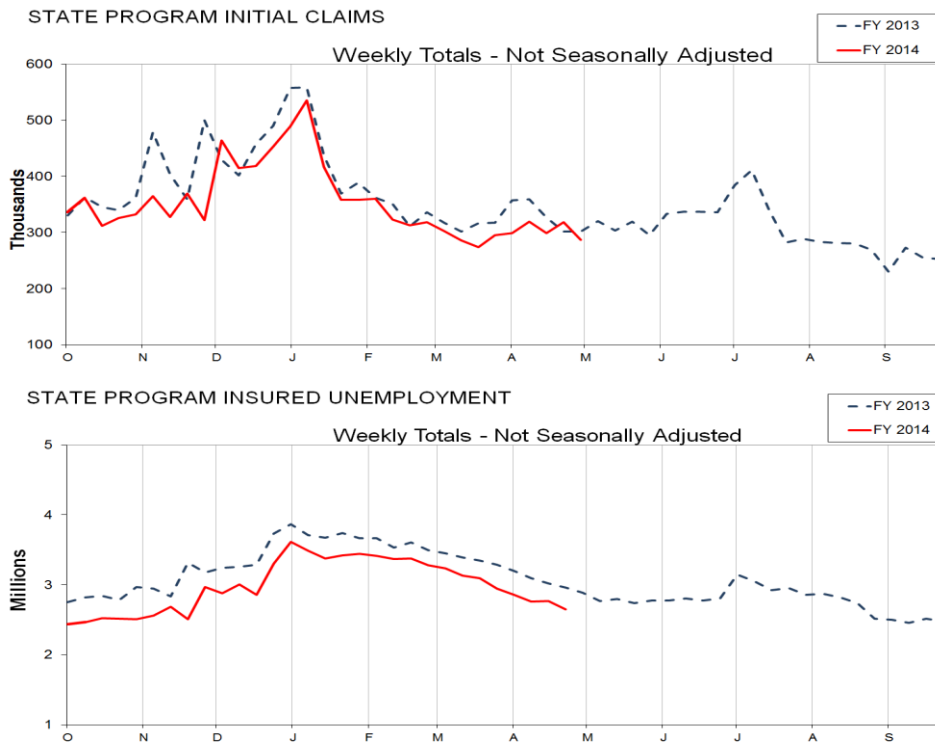
The advance seasonally adjusted **insured unemployment rate** was 2.0 percent for the week ending April 26, a decrease of 0.1 percentage point from the previous week's unrevised rate of 2.1 percent. The advance number for seasonally adjusted **insured unemployment** during the week ending April 26 was 2,685,000, a decrease of 76,000 from the previous week's revised level. The previous week's level was revised down by 10,000 from 2,771,000 to 2,761,000. The 4-week moving average was 2,715,250, a decrease of 16,250 from the previous week's revised average. This is the lowest level for this average since December 22, 2007 when it was 2,700,000. The previous week's average was revised down by 2,500 from 2,734,000 to 2,731,500.



UNADJUSTED DATA

The advance number of actual initial claims under state programs, unadjusted, totaled 286,916 in the week ending May 3, a decrease of 31,211 (or -9.8 percent) from the previous week. The seasonal factors had expected a decrease of 7,591 (or -2.4 percent) from the previous week. There were 301,602 initial claims in the comparable week in 2013.

The advance unadjusted insured unemployment rate was 2.0 percent during the week ending April 26, a decrease of 0.1 percentage point from the prior week. The advance unadjusted number for persons claiming UI benefits in state programs totaled 2,649,889, a decrease of 116,617 (or -4.2 percent) from the preceding week. The seasonal factors had expected a decrease of 41,415 (or -1.5 percent) from the previous week. A year earlier the rate was 2.3 percent and the volume was 2,963,249.



The total number of people claiming benefits in all programs for the week ending April 19 was 2,832,693, an increase of 10,353 from the previous week. There were 4,866,804 persons claiming benefits in all programs in the comparable week in 2013.

No state was triggered "on" the Extended Benefits program during the week ending April 19.

Initial claims for UI benefits filed by former Federal civilian employees totaled 1,269 in the week ending April 26, an increase of 320 from the prior week. There were 1,554 initial claims filed by newly discharged veterans, an increase of 65 from the preceding week.

There were 14,687 former Federal civilian employees claiming UI benefits for the week ending April 19, a decrease of 428 from the previous week. Newly discharged veterans claiming benefits totaled 26,004, a decrease of 54 from the prior week.

The highest insured unemployment rates in the week ending April 19 were in Alaska (4.9), New Jersey (3.5), Connecticut (3.4), Puerto Rico (3.3), California (3.2), Illinois (3.0), Pennsylvania (3.0), Nevada (2.9), Maine (2.6), and Michigan (2.6).

The largest increases in initial claims for the week ending April 26 were in New York (+23,523), Massachusetts (+3,983), Rhode Island (+1,080), Oregon (+959), and Delaware (+956), while the largest decreases were in Michigan (-6,642), New Jersey (-2,269), Pennsylvania (-1,704), Maryland (-1,670), and California (-1,237).

UNEMPLOYMENT INSURANCE DATA FOR REGULAR STATE PROGRAMS

WEEK ENDING	Advance May 3	April 26	Change	April 19	<u>Prior Year</u>¹
Initial Claims (SA)	319,000	345,000	-26,000	330,000	332,000
Initial Claims (NSA)	286,916	318,127	-31,211	299,182	301,602
4-Wk Moving Average (SA)	324,750	320,250	+4,500	317,000	340,000
WEEK ENDING	Advance April 26	April 19	Change	April 12	<u>Prior Year</u>¹
Insured Unemployment (SA)	2,685,000	2,761,000	-76,000	2,674,000	3,011,000
Insured Unemployment (NSA)	2,649,889	2,766,506	-116,617	2,757,378	2,963,249
4-Wk Moving Average (SA)	2,715,250	2,731,500	-16,250	2,750,750	3,030,750
<u>Insured Unemployment Rate (SA)</u> ²	2.0%	2.1%	-0.1	2.0%	2.3%
<u>Insured Unemployment Rate (NSA)</u> ²	2.0%	2.1%	-0.1	2.1%	2.3%

INITIAL CLAIMS FILED IN FEDERAL PROGRAMS (UNADJUSTED)

WEEK ENDING	April 26	April 19	Change	<u>Prior Year</u>¹
Federal Employees (UCFE)	1,269	949	+320	1,364
Newly Discharged Veterans (UCX)	1,554	1,489	+65	2,159

PERSONS CLAIMING UI BENEFITS IN ALL PROGRAMS (UNADJUSTED)

WEEK ENDING	April 19	April 12	Change	<u>Prior Year</u>¹
Regular State	2,760,430	2,752,219	+8,211	3,014,586
Federal Employees	14,687	15,115	-428	18,584
Newly Discharged Veterans	26,004	26,058	-54	36,649
<u>Extended Benefits</u> ³	94	140	-46	391
<u>State Additional Benefits</u> ⁴	10,311	9,921	+390	5,786
<u>STC / Workshare</u> ⁵	21,167	18,887	+2,280	27,631
<u>TOTAL</u> ⁶	2,832,693	2,822,340	+10,353	4,866,804

FOOTNOTES

SA - Seasonally Adjusted Data, NSA - Not Seasonally Adjusted Data

1. Prior year is comparable to most recent data.
2. Most recent week used covered employment of 131,532,656 as denominator.
3. Information on the EB program can be found here: [EB Program information](#)
4. Some states maintain additional benefit programs for those claimants who exhaust regular, extended and emergency benefits. Information on states that participate, and the extent of benefits paid, can be found starting on page 4-5 of this link: [Extensions and Special Programs PDF](#)
5. Information on STC/Worksharing can be found starting on page 4-9 of the following link: [Extensions and Special Programs PDF](#)
6. Prior Year Total includes Emergency Unemployment Compensation (EUC08) claimants.

UNADJUSTED INITIAL CLAIMS FOR WEEK ENDED APRIL 26, 2014

STATES WITH AN DECREASE OF MORE THAN 1,000

State	Change	State Supplied Comment
MI	-6,642	Fewer layoffs in the wholesale trade industry.
NJ	-2,269	Fewer layoffs in the educational services, transportation and warehousing, and public administration industries.
PA	-1,704	Fewer layoffs in the transportation, foods services, and construction industries.
MD	-1,670	No comment.
CA	-1,237	No comment.

STATES WITH AN INCREASE OF MORE THAN 1,000

State	Change	State Supplied Comment
NY	+23,523	Layoffs in the transportation and warehousing, food service, and educational services industries.
MA	+3,983	Layoffs in the educational services and construction industries.
RI	+1,080	Layoffs in the business service and educational services industries.

Seasonally Adjusted US Weekly Claims (in thousands)

Week Ending	Change from			Insured Unemployment	Change from			IUR
	Initial Claims	Prior Week	4-Week Average		Prior Week	4-Week Average		
April 27, 2013	332	-11	344.00	3011	-13	3030.75	2.3	
May 4, 2013	332	0	340.00	3017	6	3016.00	2.3	
May 11, 2013	355	23	340.50	2943	-74	2998.75	2.3	
May 18, 2013	344	-11	340.75	2994	51	2991.25	2.3	
May 25, 2013	350	6	345.25	2979	-15	2983.25	2.3	
June 1, 2013	347	-3	349.00	2980	1	2974.00	2.3	
June 8, 2013	337	-10	344.50	2975	-5	2982.00	2.3	
June 15, 2013	352	15	346.50	2977	2	2977.75	2.3	
June 22, 2013	345	-7	345.25	2959	-18	2972.75	2.3	
June 29, 2013	344	-1	344.50	3003	44	2978.50	2.3	
July 6, 2013	353	9	348.50	3079	76	3004.50	2.4	
July 13, 2013	339	-14	345.25	2991	-88	3008.00	2.3	
July 20, 2013	343	4	344.75	2950	-41	3005.75	2.3	
July 27, 2013	333	-10	342.00	3001	51	3005.25	2.3	
August 3, 2013	335	2	337.50	2963	-38	2976.25	2.3	
August 10, 2013	329	-6	335.00	2981	18	2973.75	2.3	
August 17, 2013	338	9	333.75	2981	0	2981.50	2.3	
August 24, 2013	336	-2	334.50	2928	-53	2963.25	2.3	
August 31, 2013	328	-8	332.75	2845	-83	2933.75	2.2	
September 7, 2013	307	-21	327.25	2812	-33	2891.50	2.2	
September 14, 2013	318	11	322.25	2847	35	2858.00	2.2	
September 21, 2013	316	-2	317.25	2916	69	2855.00	2.2	
September 28, 2013	318	2	314.75	2910	-6	2871.25	2.2	
October 5, 2013	362	44	328.50	2888	-22	2890.25	2.2	
October 12, 2013	355	-7	337.75	2881	-7	2898.75	2.2	
October 19, 2013	347	-8	345.50	2896	15	2893.75	2.2	
October 26, 2013	346	-1	352.50	2890	-6	2888.75	2.2	
November 2, 2013	341	-5	347.25	2843	-47	2877.50	2.2	
November 9, 2013	342	1	344.00	2889	46	2879.50	2.2	
November 16, 2013	332	-10	340.25	2813	-76	2858.75	2.2	
November 23, 2013	324	-8	334.75	2804	-9	2837.25	2.2	
November 30, 2013	317	-7	328.75	2837	33	2835.75	2.2	
December 7, 2013	358	41	332.75	2887	50	2835.25	2.2	
December 14, 2013	368	10	341.75	2925	38	2863.25	2.2	
December 21, 2013	339	-29	345.50	2840	-85	2872.25	2.2	
December 28, 2013	344	5	352.25	2863	23	2878.75	2.2	
January 4, 2014	333	-11	346.00	2945	82	2893.25	2.2	
January 11, 2014	329	-4	336.25	2951	6	2899.75	2.3	
January 18, 2014	334	5	335.00	2903	-48	2915.50	2.2	
January 25, 2014	345	11	335.25	2915	12	2928.50	2.2	
February 1, 2014	328	-17	334.00	2918	3	2921.75	2.2	
February 8, 2014	343	15	337.50	2936	18	2918.00	2.2	
February 15, 2014	330	-13	336.50	2941	5	2927.50	2.2	
February 22, 2014	351	21	338.00	2890	-51	2921.25	2.2	
March 1, 2014	325	-26	337.25	2850	-40	2904.25	2.2	
March 8, 2014	319	-6	331.25	2869	19	2887.50	2.2	
March 15, 2014	323	4	329.50	2814	-55	2855.75	2.1	
March 22, 2014	310	-13	319.25	2838	24	2842.75	2.2	
March 29, 2014	332	22	321.00	2750	-88	2817.75	2.1	
April 5, 2014	301	-31	316.50	2741	-9	2785.75	2.1	
April 12, 2014	305	4	312.00	2674	-67	2750.75	2.0	
April 19, 2014	330	25	317.00	2761	87	2731.50	2.1	
April 26, 2014	345	15	320.25	2685	-76	2715.25	2.0	
May 3, 2014	319	-26	324.75					

Initial Claims Filed During Week Ended April 26								Insured Unemployment For Week Ended April 19				
INITIAL CLAIMS								INSURED UNEMPLOYMENT				
CHANGE FROM								CHANGE FROM				
STATE	STATE	LAST WEEK	YEAR AGO	UCFE ¹	UCX ¹	STATE	(%) ²	LAST WEEK	YEAR AGO	UCFE ¹	UCX ¹	ALL PROGRAMS EXCLUDING RAILROAD RETIREMENT
Alabama	3512	334	-299	11	32	27332	1.5	-15	-2834	129	282	27743
Alaska	1468	-34	-1386	8	4	15388	4.9	859	-634	168	101	15657
Arizona	5592	-939	165	7	4	39864	1.6	1823	-729	216	294	40374
Arkansas	2497	31	-958	14	11	22500	2.0	236	-4499	128	207	22835
California	61168	-1237	14050	200	253	486463	3.2	10476	20743	2931	4843	494243
Colorado	3028	17	-488	18	46	38923	1.7	-2135	-2805	345	978	40246
Connecticut	5125	-935	-27	5	13	55234	3.4	6128	-848	90	239	55563
Delaware	1538	956	781	0	2	7780	1.9	-50	-331	38	49	7871
District of Columbia	312	-35	-473	5	1	10302	2.0	113	-465	370	23	10697
Florida	15857	852	4212	50	109	95073	1.3	-4656	-11443	516	831	96420
Georgia	7744	447	-853	39	89	45937	1.2	-369	-17392	373	907	47217
Hawaii	1601	17	-19	9	24	10462	1.8	553	-667	115	271	10848
Idaho	1380	95	-449	10	6	10708	1.7	-419	-3329	112	84	10904
Illinois	10136	-521	-3718	12	33	169942	3.0	5978	766	556	787	171285
Indiana	4402	234	-1041	20	21	36503	1.3	-2591	-11178	255	310	37068
Iowa	2087	-311	-476	7	10	21053	1.4	-1422	-7013	78	146	21277
Kansas	2092	-102	-318	5	11	19240	1.5	-527	-4490	215	265	19720
Kentucky	3053	-96	-679	20	18	28284	1.6	1053	-4033	232	602	29118
Louisiana	2238	287	-303	9	12	18921	1.0	-75	-4227	107	102	19130
Maine	1177	-302	-492	1	0	14572	2.6	-805	-1525	46	69	14687
Maryland	4072	-1670	-506	42	20	53577	2.2	880	-5649	528	420	54527
Massachusetts	9241	3983	2345	240	26	81455	2.5	-5036	-13770	234	464	82153
Michigan	7522	-6642	-2230	21	31	103863	2.6	-8458	5877	227	510	104600
Minnesota	3689	-54	-410	5	5	56479	2.1	-3980	-7856	128	277	56884
Mississippi	1982	-18	-626	15	6	17160	1.6	34	-4575	197	133	17490
Missouri	4875	-266	-1038	9	10	38639	1.5	-244	-8696	199	229	39067
Montana	1154	47	47	9	11	9798	2.3	-420	-2502	283	99	10180
Nebraska	990	-55	-157	3	2	7926	0.9	-217	-2656	27	32	7985
Nevada	3374	-528	-112	6	7	32396	2.9	1163	-804	198	246	32840
New Hampshire	1217	364	-597	0	1	8113	1.3	-507	-1071	9	19	8141
New Jersey	11061	-2269	2717	24	18	129833	3.5	6328	4740	299	534	130686
New Mexico	1237	-205	34	5	8	16334	2.1	-18	-616	192	166	16692
New York	40252	23523	21454	109	99	219732	2.6	14384	-10334	785	1275	221810
North Carolina	5115	737	-4569	16	61	55977	1.4	-712	-33257	239	860	57076
North Dakota	264	32	-73	1	0	3171	0.8	-423	-1642	30	7	3208
Ohio	7672	251	-1625	16	45	78478	1.6	-3980	-12902	162	742	79382
Oklahoma	1504	-12	-343	2	18	16172	1.1	-46	-3918	86	202	16460
Oregon	5457	959	-770	35	24	39672	2.4	-733	-8363	545	351	40568
Pennsylvania	17352	-1704	-1269	90	72	166504	3.0	-3997	-11146	805	1160	168475
Puerto Rico	1975	23	-573	1	9	30098	3.3	530	-10735	112	343	30553
Rhode Island	2306	1080	537	4	3	11715	2.6	-874	-2749	57	68	11840
South Carolina	3683	814	-241	7	24	18018	1.0	318	-11439	75	186	18279
South Dakota	207	-6	-74	13	2	2067	0.5	-478	-1007	26	5	2098
Tennessee	3534	177	-1064	13	17	28113	1.1	-2618	-11500	119	280	28512
Texas	15360	547	-1439	57	186	154065	1.4	4876	-4159	749	3316	158165
Utah	1754	-6	-150	11	4	13037	1.1	-319	-3324	153	103	13293
Vermont	986	-120	-63	1	1	7040	2.4	-69	-466	20	25	7085
Virgin Islands	47	25	11	0	0	856	2.2	64	-74	2	16	874
Virginia	3888	78	-435	16	38	37133	1.1	-683	-5701	352	867	38352
Washington	8569	491	545	34	85	62300	2.2	-668	-7904	451	1314	64065
West Virginia	1094	-91	-366	6	6	16509	2.4	1104	349	104	122	16735
Wisconsin	10296	758	506	7	13	71049	2.6	-308	-17625	161	200	71411
Wyoming	391	-56	-190	1	3	4746	1.7	80	-2079	113	43	4902
Totals	318127	18945	16505	1269	1554	2766506	2.1	9128	-254486	14687	26004	2807291

Figures Appearing In columns showing Over-The-Week Changes reflect all revisions in data for prior week submitted by State agencies.

1. The Unemployment Compensation program for Federal Employees (UCFE) and the Unemployment Compensation for Ex-servicemembers (UCX) exclude claims filed jointly under other programs to avoid duplication.
2. Rate is not seasonally adjusted. The source of US total covered employment is BLS.

TECHNICAL NOTES

This news release presents the weekly unemployment insurance (UI) claims reported by each state's unemployment insurance program offices. These claims may be used for monitoring workload volume, assessing state program operations and for assessing labor market conditions. States initially report claims directly taken by the state liable for the benefit payments, regardless of where the claimant who filed the claim resided. These are the basis for the advance initial claims and continued claims reported each week. These data come from ETA 538, Advance Weekly Initial and Continued Claims Report. The following week initial claims and continued claims are revised based on a second reporting by states that reflect the claimants by state of residence. These data come from the ETA 539, Weekly Claims and Extended Benefits Trigger Data Report.

A. Initial Claims

An initial claim is a claim filed by an unemployed individual after a separation from an employer. The claimant requests a determination of basic eligibility for the UI program. When an initial claim is filed with a state, certain programmatic activities take place and these result in activity counts including the count of initial claims.

The count of U.S. initial claims for unemployment insurance is a leading economic indicator because it is an indication of emerging labor market conditions in the country. However, these are weekly administrative data which are difficult to seasonally adjust, making the series subject to some volatility.

B. Continued Weeks Claimed

A person who has already filed an initial claim and who has experienced a week of unemployment then files a continued claim to claim benefits for that week of unemployment. Continued claims are also referred to as insured unemployment.

The count of U.S. continued weeks claimed is also a good indicator of labor market conditions. Continued claims reflect the current number of insured unemployed workers filing for UI benefits in the nation. While continued claims are not a leading indicator (they roughly coincide with economic cycles at their peaks and lag at cycle troughs), they provide confirming evidence of the direction of the U.S. economy.

C. Seasonal Adjustments and Annual Revisions

Over the course of a year, the weekly changes in the levels of initial claims and continued claims undergo regularly occurring fluctuations. These fluctuations may result from seasonal changes in weather, major holidays, the opening and closing of schools, or other similar events. Because these seasonal events follow a more or less regular pattern each year, their influence on the level of a series can be tempered by adjusting for regular seasonal variation. These adjustments make trend and cycle developments easier to spot.

At the beginning of each calendar year, the Bureau of Labor Statistics provides the Employment and Training Administration (ETA) with a set of seasonal factors to apply to the unadjusted data during that year.

Concurrent with the implementation and release of the new seasonal factors, ETA incorporates revisions to the UI claims historical series caused by updates to the unadjusted data.

[Weekly Claims Archives](#)
[Weekly Claims Data](#)

U.S. Department of Labor news materials are accessible at <http://www.dol.gov>. The Department's [Reasonable Accommodation Resource Center](#) converts Departmental information and documents into alternative formats, which include Braille and large print. For alternative format requests, please contact the Department at (202) 693-7828 (voice) or (800) 877-8339 (federal relay).